

IMPORTANT JEWELS

London 12 June 2019



CHRISTIE'S



IMPORTANT JEWELS

WEDNESDAY 12 JUNE 2019

AUCTION

Wednesday 12 June 2019 at
11.00 am (Lots 1-276)

8 King Street, St. James's
London SW1Y 6QT

VIEWING

Friday	7 June	9.00 am – 4.30 pm
Saturday	8 June	12.00 pm – 5.00 pm
Sunday	9 June	12.00 pm – 5.00 pm
Monday	10 June	9.00 am – 4.30 pm
Tuesday	11 June	9.00 am – 4.30 pm

AUCTIONEERS

Nick Martineau & Max Fawcett

AUCTION CODE AND NUMBER

In sending absentee bids or making enquiries, this sale should be referred to as

ROSE-16992

AUCTION RESULTS

Tel: +44 (0)20 7839 9060
christies.com

CONDITIONS OF SALE

This auction is subject to Important Notices, Conditions of Sale and to reserves.



Browse this auction and view real-time results on your iPhone, iPod Touch, iPad and Android

These auctions feature

CHRISTIE'S  **LIVE**

Bid live in Christie's salerooms worldwide register at christies.com

CHRISTIE'S

In addition to the hammer price, a Buyer's Premium (plus VAT) is payable. Other taxes and/or an Artist Resale Royalty fee are also payable if the lot has a tax or λ symbol. Check Section D of the Conditions of Sale at the back of this catalogue.

INTERNATIONAL JEWELLERY AUCTIONS

AUCTION CALENDAR 2019

TO INCLUDE YOUR PROPERTY IN THESE SALES PLEASE CONSIGN TEN WEEKS BEFORE THE SALE DATE.
CONTACT THE SPECIALISTS OR REPRESENTATIVE OFFICE FOR FURTHER INFORMATION.

15 MAY
MAGNIFICENT JEWELS
GENEVA

28 MAY
MAGNIFICENT JEWELS
HONG KONG

30 MAY- 7 JUNE
JEWELS
ONLINE NY

12 JUNE
IMPORTANT JEWELS
LONDON

19 JUNE
MAHARAJAS & MUGHAL
MAGNIFICENCE
NEW YORK

20 JUNE
JEWELS
PARIS

19-27 SEPTEMBER
JEWELS
ONLINE NY

29 OCTOBER - 5 NOVEMBER
JEWELS
ONLINE HK

12 NOVEMBER
MAGNIFICENT JEWELS
GENEVA

26 NOVEMBER
MAGNIFICENT JEWELS
HONG KONG

27 NOVEMBER
IMPORTANT JEWELS
LONDON

3 DECEMBER
JEWELS
PARIS

3-12 DECEMBER
JEWELS
ONLINE NY

10 DECEMBER
MAGNIFICENT JEWELS
NEW YORK



Subject to change.

24/04/19

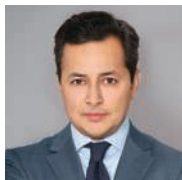


WORLDWIDE JEWELLERY DEPARTMENT

INTERNATIONAL TEAM



FRANÇOIS CURIEL
Chairman, Europe
fcuriel@christies.com
+33 140 76 84 00



RAHUL KADAKIA
International Head
of Jewellery
rkadakia@christies.com
+1 212 636 2310



VICKIE SEK
Chairman, Jewellery, Asia
vsek@christies.com
+852 297 89922



JULIEN BRUNIE
International Head,
Private sales, Jewellery
jbrunie@christies.com
+33 140 76 83 82

AMERICAS



ANGELINA CHEN
Senior Specialist, New York
achen@christies.com
+1 212 636 2303



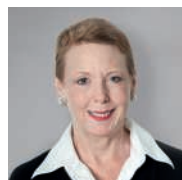
ALEXANDRA DAMIANOS
Junior Specialist, New York
adamianos@christies.com
+1 212 636 2308



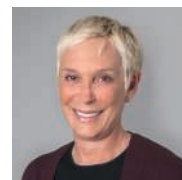
JACQUELINE DISANTE
Associate Specialist,
New York
jdisante@christies.com
+1 212 636 2316



CAROLINE ERVIN
Associate Specialist,
New York
cervin@christies.com
+1 212 636 2307



PEGGY GOTTLIEB
Specialist, Los Angeles
pgottlieb@christies.com
+1 310 385 2665



LISA HUBBARD
Senior Advisor, Los Angeles
lhubbard@christies.com
+1 310 385 2624



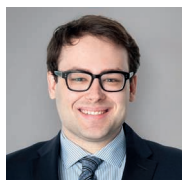
JEROME KERR-JARRETT
Private Sales Director,
Los Angeles
jkerjarrett@christies.com
+1 310 385 2620



EDWARD KLOPFER
Associate Specialist,
New York
eklopf@christies.com
+1 212 636 2318



DAPHNE LINGON
Head of Jewelry
Department, Americas
dlingon@christies.com
+1 212 636 2309



CLAIBOURNE POINDEXTER
Associate Specialist,
New York
cpoindexter@christies.com
+1 212 636 2316

ASIA



KAREN AU YEUNG
Senior International
Specialist, Hong Kong
kau-yeung@christies.com
+852 2978 9921



JEFF CHAN
Specialist, Hong Kong
jchan@christies.com
+852 2978 9979



FUNG CHIANG
Senior Specialist,
Hong Kong
fchiang@christies.com
+852 2978 9977



MONICA HARRISON
Associate Specialist,
Hong Kong
mharrison@christies.com
+852 2978 9975



CAROLINE LIANG
Specialist, Shanghai
cliang@christies.com
+86 212 226 1520



CONNIE LUK
Associate Specialist,
Hong Kong
cluk@christies.com
+852 2978 9928

COPYRIGHT NOTICE

No part of this catalogue may be reproduced, stored in a retrieval system or transmitted by any form or by any means, electronic, mechanical, photocopying, recording or otherwise, without the prior written permission of Christie's.

© COPYRIGHT, CHRISTIE, MANSON & WOODS LTD. (2019)

EUROPE, MIDDLE EAST, RUSSIA AND INDIA



ANGELA BERDEN
Senior Specialist, Geneva
aberden@christies.com
+41 22 319 17 82



MAFALDA CHENU
Associate Specialist, Paris
mchenu@christies.com
+33 1 40 76 72 59



MARIE-CECILE CISAMOLO
Junior Specialist, Geneva
mccisamolo@christies.com
+41 22 319 17 61



LEO CRIACO
Specialist, Geneva
lcriaco@christies.com
+41 22 319 17 44



VIOLAINE D'ASTORG
Head of Department,
Paris
vdastorg@christies.com
+33 1 40 76 85 81



ELEONORA D'OTTAVI
Junior Specialist, Rome
edottavi@christies.com
+39 06 686 3340



RACHEL EVANS-OMEYER
Specialist, London
revans@christies.com
+44 20 7389 2382



JESSICA ELLIOTT
Specialist, London
jelliott@christies.com
+44 20 7389 2172



MAX FAWCETT
Specialist, Geneva
mfawcett@christies.com
+41 22 319 17 38



MEI Y GIAM
Private Sales Director,
London
mgiam@christies.com
+44 20 7389 5104



JESSICA KOERS
Head of Department,
Amsterdam
jkoers@christies.com
+31 20 575 5915



JEAN-MARC LUNEL
Senior International
Specialist, Geneva
jlunel@christies.com
+41 22 319 17 37



KEITH PENTON
Head of Department,
London
kpenton@christies.com
+44 20 7389 2526



RAYMOND SANCROFT-BAKER
Consultant, London
rsancroft-baker@christiespartners.com
+44 20 7389 2388



FREDERIK SCHWARZ
Specialist, Berlin
fshwarz@christies.com
+49 175 524 4379



ELENA TSCHIGG-BAUER
Business Getter, Zurich
etschigg@christies.com
+41 44 268 10 30



DAVID WARREN
Senior International
Director, London
dwarren@christies.com
+44 20 7389 2380

SPECIALISTS & SERVICES FOR THIS AUCTION

SPECIALISTS

Keith Penton, F.G.A., D.G.A.
Head of Department

Rachel Evans-Omeyer, F.G.A., D.G.A.
Specialist

Jessica Elliott, F.G.A., D.G.A.
Specialist

Tel: +44 (0)20 7389 2172
Fax: +44 (0)20 7389 2311

CONSULTANT

Raymond Sancroft-Baker, F.G.A.

CATALOGUERS

Michaela Suhl, G.G.
Lili Barkhordar, G.G.

GLOBAL MANAGING DIRECTOR, LUXURY

Aline Sylla-Walbaum
Tel: +44 (0)20 7389 2554

HEAD OF SALE MANAGEMENT

Evi Devriese
Tel: +44 (0)20 7389 2383

BUSINESS MANAGER

Virginie Dulucq
Tel: +44 (0)20 7389 2853

AUCTION RESULTS

Tel: +44 (0)20 7839 9060
christies.com

christies.com

SERVICES

POST-SALE SERVICES

Rosie Oria
Post-Sale Coordinator
Payment, Shipping, and Collection
Tel: +44 (0)20 7752 3200
Fax: +44 (0)20 7752 3300
Email: PostSaleUK@christies.com

ABSENTEE AND TELEPHONE BIDS

Tel: +44 (0)20 7389 2658
Fax: +44 (0)20 7930 8870

CLIENT SERVICES

Tel: +44 (0)20 7839 9060
Fax: +44 (0)20 7389 2869
Email: info@christies.com

EMAIL

For general enquiries about this auction, emails should be addressed to Head of Sale Management.



1



2



3

1

DIAMOND 'GYPSY' EARRINGS, DE GRISOGONO

Circular-cut diamonds, gold (Swiss and European Convention marks), 6.4 cm, signed de Grisogono, maker's marks, no. B7557

£4,000-6,000

US\$5,300-7,800
€4,700-7,000

2

PERIDOT AND DIAMOND 'SERPENTI' BANGLE, BULGARI

Fancy-cut peridot, circular-cut diamonds, sprung, inner circumference 15.0 cm, signed Bulgari, no. A46P4K, black Bulgari case

£12,000-15,000

US\$16,000-20,000
€14,000-17,000

3

PERIDOT AND DIAMOND 'SERPENTI' RING, BULGARI

Fancy-cut peridot, circular-cut diamonds, gold (European Convention marks), sprung, ring size L, signed Bulgari, no. CYZZNN, black Bulgari case

£3,000-4,000

US\$4,000-5,200
€3,500-4,600

6 **In addition to the hammer price, a Buyer's Premium (plus VAT) is payable. Other taxes and/or an Artist Resale Royalty fee are also payable if the lot has a tax or λ symbol. Check Section D of the Conditions of Sale at the back of this catalogue.**



4
'TUBOGAS' NECKLACE AND WRISTWATCH SET AND
'TUBOGAS' EARRINGS, BULGARI

Necklace: sprung, gold (London import marks), 1991, 38.0 cm, signed Bulgari, beige Bulgari pouch; Earrings: 3.2 cm, signed Bulgari, maker's mark, beige Bulgari pouch; Wristwatch: sprung, French import marks, quartz movement, case width 1.8 cm, inner circumference 14.0 cm, signed Bulgari, maker's mark, beige Bulgari pouch

£5,000-7,000

US\$6,500-9,000
€5,800-8,100



5

5
A MULTI-GEM, CULTURED PEARL AND DIAMOND 'ALLEGRA' NECKLACE, BULGARI

Vari-cut tourmaline, peridot, amethyst and topaz, cultured pearls, circular-cut diamonds, necklace 45.0 cm, pendant 7.0 cm, signed Bulgari, no. EPM44K, black Bulgari case and travel pouch

£2,000-3,000

US\$2,700-3,900
 €2,400-3,500

6
MULTI-GEM BRACELET, AMSTERDAM SAUER

Vari-cut green and pink tourmaline, amethyst, kunzite and peridot, circular-cut diamonds, 17.6 cm, maker's mark, grey Amsterdam Sauer case

£5,000-7,000

US\$6,600-9,100
 €5,800-8,100



6



7

7
DIAMOND EARRINGS, DE GRISOGONO

Circular-cut diamonds, gold (Swiss and European Convention marks),
6.0 cm, maker's mark, no. B32946

£8,000-12,000

US\$11,000-16,000
€9,300-14,000



8

8
DIAMOND 'CAMÉLIA' RING, CHANEL

Circular-cut diamonds, French marks, ring size J, signed Chanel,
no. 6N1450

£6,000-8,000

US\$7,900-10,000
€7,000-9,300



9

9
CITRINE AND GARNET RING, CHANEL

Pear-shaped citrines and garnets, French marks, ring size J,
signed Chanel, no. 13M206

£2,000-3,000

US\$2,700-3,900
€2,400-3,500



10

10

COLOURED DIAMOND AND DIAMOND RING, CHANEL

Circular-cut black diamonds and diamonds, French marks, ring size K, signed Chanel, no. 8Q104

Please note that the coloured diamonds have not been tested for natural colour origin

£2,000-3,000

US\$2,700-3,900

€2,400-3,500



11

11

CULTURED PEARL AND DIAMOND 'BAROQUE' RING, CHANEL

Cultured pearls, circular-cut diamonds, French marks, ring size J, signed Chanel, no. 17Q148

£3,000-4,000

US\$4,000-5,200

€3,500-4,600



12

12

AMETHYST, TANZANITE, PERIDOT AND DIAMOND RING, CHANEL

Circular-cut amethyst, pear-shaped tanzanites, oval cabochon peridots, circular-cut diamonds, French marks, ring size J, signed Chanel, no. 14Q335

£2,000-3,000

US\$2,700-3,900

€2,400-3,500



13

13
CULTURED PEARL AND DIAMOND 'CAMÉLIA' NECKLACE, CHANEL

Cultured pearls, circular-cut diamonds, French marks, 37.5 cm, signed Chanel Bäumer, no. S53271, black Chanel case

£7,000-10,000

US\$9,200-13,000
€8,200-12,000



14

14
DIAMOND 'CAMÉLIA' RING, CHANEL

Circular-cut diamonds, gold (London hallmarks and French mark), 2009, ring size K, signed Chanel, no. 6N241

£6,000-8,000

US\$7,900-10,000
€7,000-9,300



15

15

SAPPHIRE AND DIAMOND 'CAMÉLIA' RING, CHANEL

Circular-cut sapphires and diamonds, French marks, ring size K, signed Chanel, no. 6N2183

£4,000-6,000

US\$5,300-7,800
€4,700-7,000



16

16

RUBY, COLOURED SAPPHIRE AND DIAMOND 'CAMÉLIA' RING, CHANEL

Circular-cut rubies, pink sapphires and diamonds, French marks, ring size K, signed Chanel, no. 6N2184

£4,000-6,000

US\$5,300-7,800
€4,700-7,000



17

17

COLOURED SAPPHIRE, TOURMALINE, CULTURED PEARL AND DIAMOND RING, CHANEL

Pear-shaped pink sapphires, sugarloaf pink tourmaline, cultured pearl, circular-cut diamonds, French marks, ring size I, signed Chanel, no. 8N243

£4,000-6,000

US\$5,300-7,800
€4,700-7,000



18

18

SAPPHIRE, AQUAMARINE, CULTURED PEARL AND DIAMOND RING, CHANEL

Pear-shaped sapphires, sugarloaf aquamarines, cultured pearl, circular-cut diamonds, French marks, ring size J, signed Chanel, no. 8M136

£4,000-6,000

US\$5,300-7,800
€4,700-7,000





19

VARIOUS PROPERTIES

19

SAPPHIRE, ONYX, DIAMOND AND ENAMEL 'CANE CIOPPER' BROOCH, ATTRIBUTED TO FRASCAROLO

Cabochon-cut sapphire and onyx, circular-cut diamonds, polychrome enamel, 6.0 cm

£800-1,200

US\$1,100-1,600

€930-1,400

LITERATURE:

Cf. Centro di Documentazione Sull'Oreficeria, *Il Bestiario Prezioso de Frascarolo & C.*, Valenza, For.Al Quaderni, 2005, p. 60 for a 'Cane Ciopper' brooch of similar design



20

20

GOLD, EMERALD AND DIAMOND WRISTWATCH, PATEK PHILIPPE

Circular-cut emeralds and diamonds, gold (European Convention marks), case width 2.3 cm, 17.0 cm, signed Patek Philippe

Patek Philippe Certificate of Origin, date of purchase June 1986

£3,000-5,000

US\$3,900-6,500

€3,500-5,800



21

21

EMERALD, ONYX AND DIAMOND 'LION ÉBOURIFFÉ' BROOCH, VAN CLEEF & ARPELS

Circular-cut emeralds and diamonds, black enamel, French marks, enamel chipped, one prong fitting deficient, 3.8 cm, circa 1965, signed Van Cleef & Arpels, no. B.3545

£2,800-3,800

US\$3,700-4,900

€3,300-4,400



22

22
RUBY, SAPPHIRE, EMERALD AND DIAMOND FRINGE NECKLACE

Carved rubies, sapphires and emeralds, circular-cut diamonds,
 49.4 cm

£3,000-5,000

US\$3,900-6,500
 €3,500-5,800

23
**EMERALD, DIAMOND AND RUBY BIRD BROOCH,
 VAN CLEEF & ARPELS**

Cabochon emeralds, circular-cut diamonds, single-cut rubies,
 French marks, 5.5 cm, signed Van Cleef & Arpels, no. 89136

£8,000-12,000

US\$11,000-16,000
 €9,300-14,000



23



(illustrated as bracelets)

THE PROPERTY OF A LADY

24

PAIR OF GEORGIAN TURQUOISE-SET BRACELETS / NECKLACE

Turquoise cabochons, chased repoussé links decorated to the front and reverse, circa 1820, 18.3 cm each

£1,200-1,500

US\$1,600-2,000
€1,400-1,700



25



26

VARIOUS PROPERTIES

25

ANTIQUE TOPAZ CROSS PENDANT

Fancy and cushion shaped pink topaz, gold (French marks), 4.9 cm, later fitted case

£6,000-8,000

US\$7,900-10,000
€7,000-9,200

26

PAIR OF EARLY 19TH CENTURY GOLD CANNETILLE CITRINE BRACELETS

Oval-cut citrines, gold (French marks), circa 1830, 18.5 cm, maker's mark, later fitted case

£5,000-7,000

US\$6,500-9,100
€5,800-8,100



27

27
EARLY 19TH CENTURY TOPAZ RIVIÈRE NECKLACE

Foiled oval-cut topaz, closed backed in gold, circa 1820, 42.0 cm

£15,000-20,000

US\$20,000-26,000

€18,000-23,000



28

28
EARLY 19TH CENTURY DIAMOND RING

Pear-shaped rose-cut and old-cut diamonds, silver and gold, circa 1820, ring size M

£2,000-3,000

US\$2,600-3,900

€2,400-3,500

29

LATE 18TH CENTURY PORTUGUESE TOPAZ BODICE ORNAMENT AND EARRINGS

Foiled vari-cut topaz, closed-set in silver, circa 1770, bodice ornament 6.8 cm, earrings 5.3 cm

£11,000-13,000

US\$15,000-17,000
€13,000-15,000

LITERATURE:

Cf. Leonor d'Orey, *Five Centuries of Jewellery*, National Museum of Ancient Art, Lisbon, 1995, pg.70, fig.94 and pg 73 fig 97 for a late 18th century group of similar topaz jewellery

Cf. Rui Guedes, *Joalheria Portuguesa; Portuguese Jewellery*, Bertrand Editora, Lisbon, 1995, pg 102 for comparable topaz jewels dating to the second half of the 18th century



29



30

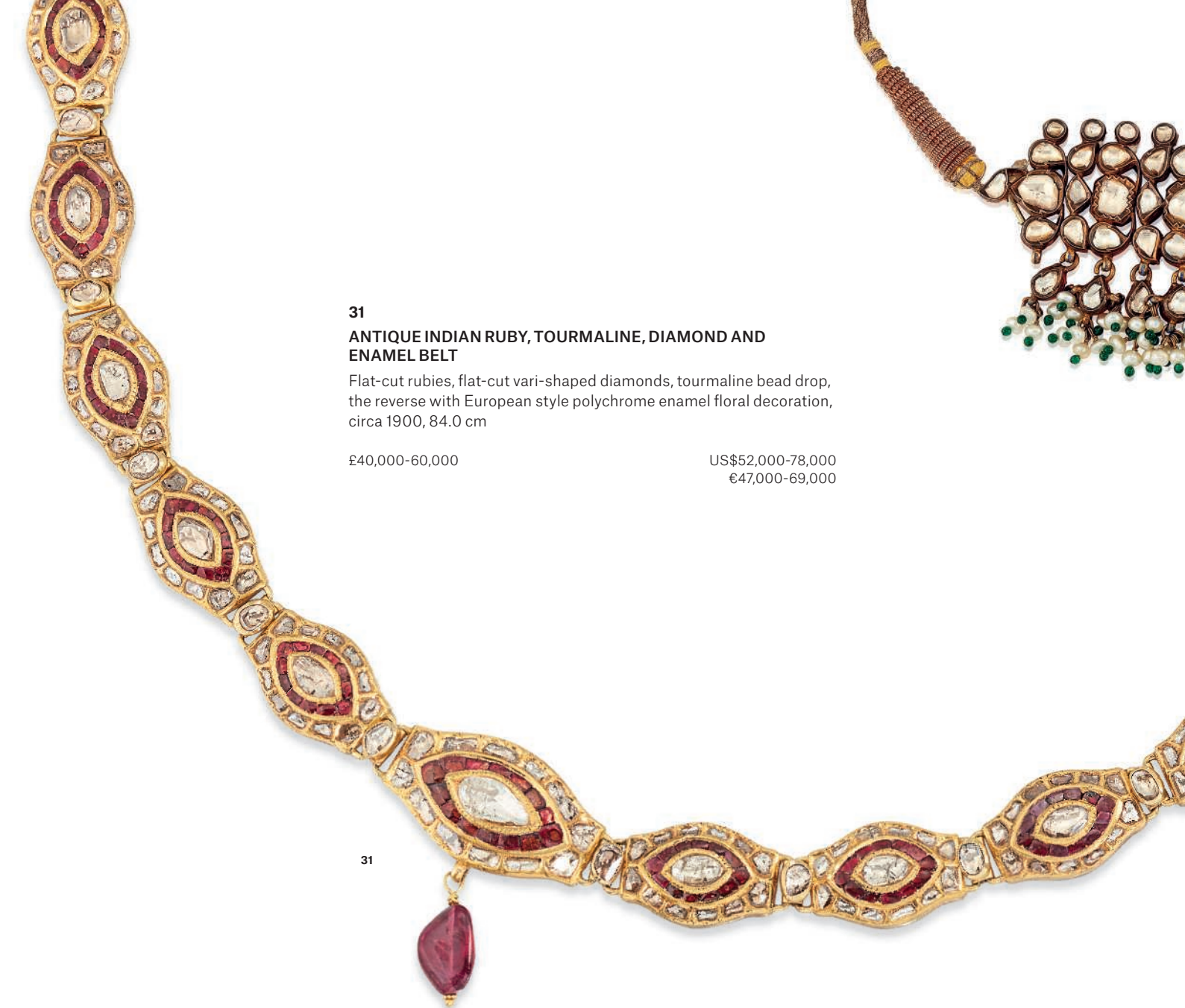
30

LATE 18TH CENTURY DIAMOND AIGRETTE

Rose-cut diamonds, mounted *en tremblant*, closed-set in silver and gold, later detachable brooch fitting, circa 1780, 9.3 cm

£7,500-9,500

US\$9,800-12,000
€8,700-11,000



31
ANTIQUe INDIAN RUBY, TOURMALINE, DIAMOND AND ENAMEL BELT

Flat-cut rubies, flat-cut vari-shaped diamonds, tourmaline bead drop, the reverse with European style polychrome enamel floral decoration, circa 1900, 84.0 cm

£40,000-60,000

US\$52,000-78,000

€47,000-69,000



(detail of reverse)



32

**32
INDIAN SEED PEARL, ENAMEL AND DIAMOND NECKLACE**

Foil-backed flat-cut diamonds, pearls, red, green, blue and cream enamel to the reverse, silk cord, first half 20th century, adjustable length, diamond-set panel 23.4 cm

£8,000-12,000

US\$11,000-16,000

€9,300-14,000

**33
INDIAN EMERALD, PEARL AND DIAMOND EARRINGS**

Flat-cut emeralds, tumbled emerald beads, flat-cut diamonds, pearls, the reverse with polychrome enamel floral and foliate decoration, 6.5 cm

Please note that the pearls have not been tested for natural origin

£6,000-8,000

US\$7,900-10,000

€7,000-9,300



33



34



35

**34
TWO PAIRS OF 18TH CENTURY GEM-SET EARRINGS**

The first set with flat-cut rubies and garnets, pearls, rose and flat-cut diamonds; the second set with cabochon and flat-cut emeralds, rose and flat-cut diamonds, each foil backed closed-set in gold, 6.0 and 3.4 cm respectively

Please note that the pearls have not been tested for natural origin

£3,000-5,000

US\$3,900-6,500
€3,500-5,800

**35
LATE 18TH / EARLY 19TH CENTURY ENAMEL NECKLACE**

Green and blue enamel, vari-coloured painted enamel panel depicting the Wedding of Cana, gold, minimum length 36.0 cm

€6,000-8,000

US\$7,800-10,000
€7,000-9,200



36

THE PROPERTY OF A LADY OF TITLE

36

RARE 18TH CENTURY ENAMEL PENDANT NECKLACE

Vari-coloured painted enamel panels, pendant detachable, 33.0 cm, pendant 5.0 cm

£2,500-3,500

US\$3,300-4,600
€3,000-4,100

37

ANTIQUE RUBY AND DIAMOND PENDANT

Cushion-cut ruby of 5.28 carats, old-cut rubies, old-cut diamonds, partially closed-set in silver and gold (French import marks), 4.7 cm, brown fitted case

£12,000-15,000

US\$16,000-20,000
€14,000-17,000



37

38

LATE 19TH CENTURY COLOURED SAPPHIRE, PEARL AND DIAMOND BROOCH

Cushion shaped yellow sapphire, pearls, old and rose-cut diamonds, silver and gold, circa 1890, 5.0 cm

Please note that the pearls have not been tested for natural origin.

£2,000-3,000

US\$2,600-3,900
€2,400-3,500



38

In addition to the hammer price, a Buyer's Premium (plus VAT) is payable. Other taxes and/or an Artist Resale Royalty fee are also payable if the lot has a tax or λ symbol. Check Section D of the Conditions of Sale at the back of this catalogue.

PROPERTY FROM A PRIVATE ENGLISH ESTATE

39

19TH CENTURY RUBY, PEARL, ENAMEL AND DIAMOND BANGLE, GIULIANO

Cushion-shaped rubies, rose-cut diamonds, polychrome enamel, circa 1870, inner circumference 16.4 cm, maker's mark C.G for Carlo Giuliano

Please note that the pearls have not been tested for natural origin

£4,000-6,000

US\$5,300-7,800
€4,700-7,000



39

VARIOUS PROPERTIES

40

VICTORIAN SAPPHIRE, GARNET, ENAMEL AND DIAMOND SERPENT NECKLACE

Rose-cut sapphire, circular cabochon garnets, old and rose-cut diamonds, blue enamel, engraved detailing to body, silver and gold, circa 1830, 41.0 cm, original fitted leather case

£6,000-8,000

US\$7,800-10,000
€7,000-9,200



40



PROPERTY FROM A PRIVATE ENGLISH ESTATE

41

**ARCHEOLOGICAL REVIVALIST GOLD AND ENAMEL NECKLACE,
JOHN BROGDEN**

Pale green and blue enamel, circa 1860, 40 cm, maker's mark JB for
John Brogden

£15,000-20,000

US\$20,000-26,000

€18,000-23,000



42

VARIOUS PROPERTIES

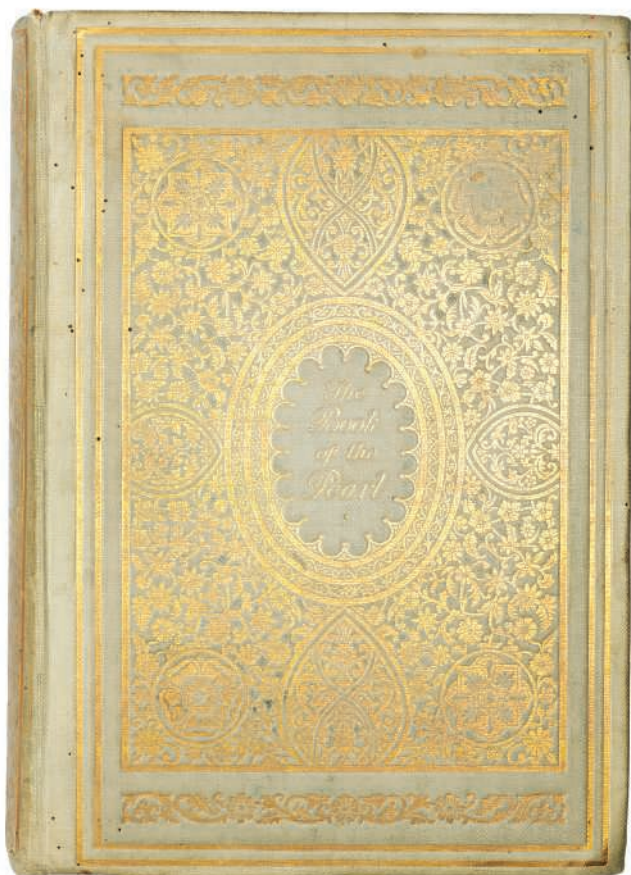
42

NATURAL PEARL AND DIAMOND EARRINGS

Natural pearls of approximately 8.8-9.0x9.7 mm and 8.7-8.8x10.3 mm, old-cut diamonds, 3.4 cm, grey fitted case

£15,000-20,000

US\$20,000-26,000
€18,000-23,000



43

43

KUNZ, GEORGE FREDERICK AND STEVENSON CHARLES HUGH

The Book of the Pearl: The History, Art, Science, and Industry of the Queen of Gems, Macmillan & Co. Ltd., London, 1908

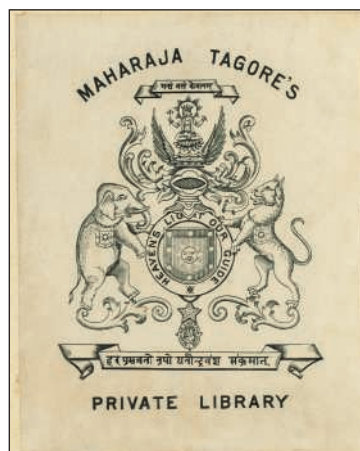
29 x 21 cm

£800-1,200

US\$1,100-1,600
€930-1,400

PROVENANCE:

Book plate of Maharaja Tagore's Private Library





45



44



46

44

NATURAL PEARL, PEARL AND DIAMOND EARRINGS

Drop-shaped natural pearls of approximately 12.1-12.8x16-17 and 11.8-12.5x17-18 mm, bouton shaped pearls, old, circular and single-cut diamonds, drops detachable, 5.0 cm

Gem & Pearl Laboratory, 2018, no. 16729: natural pearls (saltwater)

Please note that the bouton shaped pearls have not been tested for natural origin

£35,000-45,000

US\$46,000-59,000
€41,000-52,000

45

EARLY 20TH CENTURY NATURAL PEARL AND DIAMOND TWO-ROW NECKLACE

Circular and single-cut diamonds, two rows of 94 and 97 natural pearls of approximately 7.5-3.2 mm, circa 1910, 53.5 cm, brown case

£25,000-30,000

US\$33,000-39,000
€29,000-35,000

46

LATE ART DÉCO DIAMOND BROOCH

Old and circular-cut diamonds, circa 1935, 5.3 cm

£3,000-4,000

US\$4,000-5,200
€3,500-4,600



47

ART DÉCO STYPTOR, GEM AND DIAMOND-SET MINAUDIÈRE, VAN CLEEF & ARPELS

Engine turned styptor, buff-top carved sapphire, ruby, amethyst and citrine, marquise-cut emeralds, black enamel, fancy shaped, circular and single-cut diamonds, opening to reveal a bevelled mirror, covered compartment, lip stick holder and comb, circa 1935, 15.2x12.0 cm, signed Van Cleef & Arpels, no. 2769, original black suede and silk case

47

£6,000-8,000

US\$7,800-10,000
€7,000-9,200



48

THE PROPERTY OF LADY

48

ART DÉCO DIAMOND CLIP BROOCH

Old-cut diamond of 2.85 carats, old, single, circular and baguette-cut diamonds, French marks, circa 1925, 2.8 cm, blue leather Léon Col Joailler case

£6,000-8,000

US\$7,900-10,000
€7,000-9,300

VARIOUS PROPERTIES

49

ART DÉCO DIAMOND BROOCH

Circular and single-cut diamonds, later brooch fitting, circa 1935, 7.2 cm

£2,600-3,000

US\$3,400-3,900
€3,000-3,500



49

28

In addition to the hammer price, a Buyer's Premium (plus VAT) is payable. Other taxes and/or an Artist Resale Royalty fee are also payable if the lot has a tax or λ symbol. Check Section D of the Conditions of Sale at the back of this catalogue.



50



51



52

50
EARLY 20TH CENTURY TRANSFORMABLE DIAMOND NECKLACE

Old-cut diamonds, principal seven collets removable, with two brooch fittings, later ear stud fittings and later necklace with single pendant collet fitting, earlier elements circa 1910, fringe necklace 45 cm, bar brooch fitting 3.7 cm, cluster brooch fitting 2.5 cm, later ear stud fittings 0.6 cm, later necklace fitting 43.5 cm

£16,000-18,000

US\$21,000-23,000
€19,000-21,000

51
SAPPHIRE AND DIAMOND RING

Oval-cut sapphire of 18.58 carats, circular, old and rose-cut diamonds, ring size N

Gem & Pearl Laboratory, 2019, report no. 17145: Sri Lanka, no evidence of heat treatment

£50,000-60,000

US\$65,000-78,000
€58,000-69,000

52
MID-20TH CENTURY SAPPHIRE, COLOURED SAPPHIRE AND DIAMOND EARRINGS

Old and vari-cut sapphires and coloured sapphires, single and baguette-cut diamonds, circa 1950, 4.8 cm

£10,000-15,000

US\$13,000-19,000
€12,000-17,000



53

THE PROPERTY OF AN IMPORTANT NOBLE FAMILY

53

LATE 19TH CENTURY DIAMOND SPRAY BROOCH

Old-cut diamonds, circa 1880, silver and gold, 16.5 cm

£25,000-35,000

US\$33,000-46,000
€30,000-41,000



Wedding of Count and Countess of Villagonzalo (Juan Andrés Maldonado y Chávarri & Teresa Muguero y Gil de Biedma) in October 1946 (part of the present lot worn as a hair ornament illustrated).



54

FORMERLY THE PROPERTY OF GRAND DUCHESS ALEXANDRA OF MECKLENBURG-SCHWERIN

54

LATE 19TH CENTURY DIAMOND EARRINGS

Old-cut diamonds, silver and gold, circa 1880, screw fittings later replaced, 0.9 cm

£10,000-15,000

US\$14,000-20,000
€12,000-17,000

PROVENANCE:

Grand Duchess Alexandra of Mecklenburg-Schwerin, born Princess Alexandra of Hanover and Cumberland (1882-1963)
Thence by descent



55

VARIOUS PROPERTIES

55

VICTORIAN DIAMOND RIVIÈRE NECKLACE

Old-cut diamonds, silver and gold, circa 1880, 39 cm

£25,000-35,000

US\$33,000-46,000
€29,000-41,000

56

LATE 19TH CENTURY DIAMOND EARRINGS

Old cushion and rose-cut diamonds, silver and gold, circa 1890,
later adapted with later hook fittings, 5.2 cm

£3,000-5,000

US\$3,900-6,500
€3,500-5,800



56

J.F. WRANA

LOTS 57-62



J. F. Wrana, established 1894, 4 Stallburggasse, Vienna.

The origins of the Viennese jewellery business, J.F. Wrana, began in the mid-19th century when Katharina Schettril, the daughter of an agate lapidary in Vienna, wanted to promote the products of her father's factory. After her marriage in 1877 to Johann Franz Wrana, the couple eventually established their long-awaited shop in 1894 at Stallburggasse 4 on the corner of Habsburgerstrasse, where it remains to the present day.

The business prospered and J.F. Wrana became a valued supplier to the Imperial family and nobility; in 1912, Johann Franz Wrana was appointed a Royal Warrant holder. After his death in 1915, his daughter Katarina and her husband Dr. Ernst Luksch successfully steered the business through the uncertain times of two World Wars and were succeeded by their son, Dr. Gerhard Luksch in 1946.

Gerhard and his son Andreas specialised in sourcing fine quality sapphires, a tradition which continues with the fourth generation of the family today.

Gerhard's youngest brother, Alfred Luksch (later Luks), emigrated to Argentina and Canada and ultimately settled in America where he worked for Cartier in New York and deepened his knowledge of jewellery manufacturing, producing a type of diamond mounting which increased the reflective qualities of the stones – selling the rights of his invention to a major jewellery house in 2000.

The following lots were retailed by J. F. Wrana in the early years of the 20th Century.



57



58



57

EARLY 20TH CENTURY COLOURED SAPPHIRE AND DIAMOND PENDANT/BROOCH AND RUBY AND DIAMOND RING

Oval-cut pink sapphire, old and rose-cut diamonds, circa 1900, gold (Austro-Hungarian marks), with later chain, central cluster detachable, 3.0 cm, red Wrana case; Oval-cut ruby, old-cut diamonds, gold (Austro-Hungarian marks), circa 1900, ring size N

£3,000-5,000

US\$4,000-6,500
€3,500-5,800

58

LATE 19TH CENTURY DIAMOND BOW BROOCH/PENDANT AND PEARL AND DIAMOND BROOCH AND EARLY 20TH CENTURY EMERALD AND DIAMOND RING

Old and rose-cut diamonds, necklace fitting and additional later chain, circa 1895, 4.3 cm; Pearls, old and rose-cut diamonds, gold (Austro-Hungarian marks), circa 1895, 7.0 cm; Oval-cut emerald, old-cut diamonds, gold (Austrian marks), circa 1920, ring size L

Please note that the pearls have not been tested for natural origin

£6,500-8,500

US\$8,500-11,000
€7,600-9,800

J.F. WRANA

LOTS 57-62



59



60



59

EARLY 20TH CENTURY DIAMOND PENDANT NECKLACE AND PEARL, EMERALD AND DIAMOND RING AND TWO DIAMOND RINGS

Old and rose-cut diamonds, circa 1910, necklace 45.0 cm, pendant 5.5 cm, red J.F. Wrana case; Pearl, calibré-cut emeralds, old and single-cut diamonds, platinum (Austrian marks), circa 1915, ring size O½; Old and circular-cut diamonds, gold (Austrian marks), circa 1900, ring size L½ and M

Please note that the pearl has not been tested for natural origin

£6,000-8,000

US\$7,900-10,000
€7,000-9,300

60

LATE 19TH CENTURY RUBY AND DIAMOND BRACELET AND EARLY 20TH CENTURY RUBY AND DIAMOND RING

Oval-cut ruby, old-cut diamonds, gold (Austro-Hungarian marks), circa 1895, 15.0 cm; Oval-cut ruby, old-cut diamonds, gold (Austrian marks), circa 1920, ring size N

Gem & Pearl Laboratory, 2019, report no. 17143: Burma, no evidence of heat treatment (bracelet)

£5,500-7,000

US\$7,200-9,100
€6,400-8,100



61

61
LATE 19TH CENTURY NATURAL PEARL AND DIAMOND
PENDANT NECKLACE

Drop-shaped bouton natural pearl of 7.5-9.6x11.0 mm, old and rose-cut diamonds, with additional later chain, circa 1895, 39.5 cm, blue J.F. Wrana case

Gem & Pearl Laboratory, 2019, report no. 17142: natural pearl, saltwater

£10,000-12,000

US\$14,000-16,000
 €12,000-14,000

62
EARLY 20TH CENTURY DIAMOND EARRINGS AND EMERALD
AND DIAMOND RING

Old-cut diamonds, gold (Austro-Hungarian marks), pendants detachable, circa 1910, surmounts possibly earlier, 4.6 cm, black case; Square-cut emerald, old-cut diamonds, gold (Austro-Hungarian marks), circa 1900, ring size M

£4,500-6,500

US\$5,900-8,400
 €5,300-7,500



62



FORMERLY THE PROPERTY OF GRAND DUCHESS
ALEXANDRA OF MECKLENBURG-SCHWERIN

63

**EARLY 20TH CENTURY AQUAMARINE, RUBY, DIAMOND AND
PEARL PENDANT NECKLACE**

Rectangular-cut aquamarine, calibr -cut rubies, rose-cut diamonds,
seed pearls, platinum and gold, circa 1905, necklace 53 cm, pendant
5.0 cm

£12,000-18,000

US\$16,000-23,000
€14,000-21,000

PROVENANCE:

Grand Duchess Alexandra of Mecklenburg-Schwerin, born Princess
Alexandra of Hanover and Cumberland (1882-1963)
Thence by descent

VARIOUS PROPERTIES

***64**

EARLY 20TH CENTURY DIAMOND TIARA

Old and rose-cut diamonds, circa 1910, 20.5 cm, tiara frame deficient

£10,000-15,000

US\$13,000-19,000
€12,000-17,000



63



64

65

ART D C  RUBY AND DIAMOND BAR BROOCH

Oval-cut ruby of 2.67 carats, calibr -cut rubies, single and old-cut
diamonds, platinum (French marks), circa 1920, 6.9 cm, fitted leather
case

Gem & Pearl Laboratory, 2019, report no. 16881: Burma, no
indications of heat treatment

£22,000-28,000

US\$29,000-36,000
€26,000-32,000



65

In addition to the hammer price, a Buyer's Premium (plus VAT) is payable. Other taxes and/or an Artist Resale Royalty fee are also payable if the lot has a tax or λ symbol. Check Section D of the Conditions of Sale at the back of this catalogue.



66

66
**BELLE ÉPOQUE ENAMEL, SAPPHIRE AND DIAMOND
WRISTWATCH**

Blue enamel, circular-cut sapphire, old and rose-cut diamonds,
mechanical movement, platinum and gold (French marks), circa 1910,
16.4 cm, maker's mark for Henri Husson

£5,000-8,000

US\$6,600-10,000
€5,800-9,300



67

67
**ART NOUVEAU MOONSTONE AND ENAMEL LONGCHAIN
NECKLACE**

Oval cabochon moonstones, plique-à-jour enamel,
gold (French marks), circa 1900, 164.0 cm

£6,000-8,000

US\$7,800-10,000
€7,000-9,200



68



68
EARLY 20TH CENTURY SAPPHIRE AND DIAMOND EVENING BAG, MELLERIO DITS MELLER

Oval-cut sapphires, old and rose-cut diamonds, gold (French marks), opening to reveal two compartments, circa 1910, 14.0 cm, signed Mellerio dits Meller, beige Mellerio dits Meller case

£9,000-13,000

US\$12,000-17,000
€11,000-15,000

69
ART NOUVEAU OPAL CHOKER NECKLACE

Oval cabochon opals, gold (French marks), circa 1900, with three interchangeable clasp panel fittings to vary length, 34.8 cm, 35.2 cm or 36.8 cm, original G. Laffitte leather fitted case

£4,000-5,000

US\$5,200-6,500
€4,700-5,800



69



70

70

MULTI-GEM 'CELTICA' NECKLACE AND EARRING SET, BULGARI

Calibré cabochon peridots, amethysts, tourmalines and topaz, necklace 40.0 cm, earrings 2.2 cm, signed Bulgari

£6,000-8,000

US\$7,900-10,000
€7,000-9,300



71

71

DIAMOND WATCH, VERDURA

Circular-cut diamonds, quartz movement, 17.0 cm, signed Verdura

£5,000-7,000

US\$6,500-9,100
€5,800-8,100



72

72
SAPPHIRE, COLOURED SAPPHIRE AND DIAMOND RING AND NECKLACE SET, BULGARI

Pear-shaped sapphires and vari-coloured sapphires, circular-cut diamonds, ring size J, necklace 43.0 cm, pendant 5.4 cm, signed Bulgari, ring no. 0729, necklace no. 01724, black Bulgari case and pouch

£10,000-15,000

US\$13,000-19,000
 €12,000-17,000

†73
GROUP OF THREE ILLUSION-SET GEM AND DIAMOND BOMBÉ RINGS

Circular-cut pink sapphires, tsavorites and brown diamonds, circular and baguette-cut diamonds, ring size M

Please note that the coloured diamonds have not been tested for natural colour origin

£9,000-12,000

US\$12,000-15,000
 €11,000-14,000



73



74

NECKLACE AND EARRINGS, LALAOUNIS

Necklace: hammered gold (London import marks), 1997, 42.0 cm, signed Lalaounis, maker's mark, no. A21, grey Lalaounis pouch; Earrings: tension hoops, 4.5 cm, maker's mark, no. A8, red Lalaounis pouch

£4,500-5,500

US\$5,900-7,100
€5,200-6,300

75

GOLD AND LAPIS LAZULI EARRINGS, CHAUMET

Lapis lazuli panels, gold (London hallmarks), 1971, drops detachable, 7.0 cm, signed Chaumet, blue Chaumet case

£5,000-7,000

US\$6,500-9,100
€5,800-8,100



~76

INTERCHANGEABLE MULTI-GEM CUFFLINKS, VAN CLEEF & ARPELS

Malachite, lapis lazuli, coral, onyx, steel and reeded batons, French marks, 2.3 cm, signed VCA for Van Cleef & Arpels, maker's mark, no. B9042 R612, cream Van Cleef & Arpels cases

£4,000-6,000

US\$5,300-7,800
€4,700-7,000





77



78



79

77

ILLUSION-SET DIAMOND EARRINGS

Circular, marquise, square-cut and pear-shaped diamonds, 3.1 cm

£3,800-4,500

US\$5,000-5,800
€4,400-5,200

78

DIAMOND BRACELET

Circular, single and baguette-cut diamonds, 16.2 cm

£4,000-6,000

US\$5,300-7,800
€4,700-7,000

79

COLOUR-CHANGE SAPPHIRE AND DIAMOND RING

Cushion-shaped colour-change sapphire of 6.00 carats, circular-cut diamonds, ring size M ½

Gem & Pearl Laboratory, 2019, report no. 16883: 6.00 carats, Madagascar, no evidence of heat treatment

£6,000-8,000

US\$7,900-10,000
€7,000-9,300

44

In addition to the hammer price, a Buyer's Premium (plus VAT) is payable. Other taxes and/or an Artist Resale Royalty fee are also payable if the lot has a tax or λ symbol. Check Section D of the Conditions of Sale at the back of this catalogue.



80

80

MULTI-GEM 'COLOUR CHAOS' SET, ASPREY

Various circular and oval-cut coloured gems, including amethyst, tourmaline, topaz and peridot, earrings gold (London hallmarks), drops detachable, 2007, necklace 43.0 cm, earrings 3.4 cm, signed Asprey, purple Asprey cases

£8,000-12,000

US\$11,000-16,000
€9,300-14,000

81

COLOURED SAPPHIRE PENDANT

Oval-cut yellow sapphire of 75.44 carats, 2.7 cm
Gem & Pearl Laboratory, 2019, report no. 17064: 75.44 carats, Sri Lanka, no evidence of heat treatment

£40,000-60,000

US\$52,000-78,000
€47,000-69,000



81



82

82

WHITE GOLD 'HÉRITAGE' WRISTWATCH, BREGUET

White gold (European Convention marks), automatic movement, case width 2.8 cm, white gold Breguet buckle, signed Breguet, no. 3670, 4331K

£2,000-3,000

US\$2,600-3,900
€2,400-3,500

83

EARLY 20TH CENTURY ROCK CRYSTAL, ONYX AND DIAMOND DRESS SET

Frosted rock crystal plaques, circular cabochon onyx, rose-cut diamonds, platinum and gold (French marks), circa 1910, cufflinks 1.3 cm, studs 0.7 cm

£2,000-3,000

US\$2,600-3,900
€2,400-3,500



83

84

**ONYX, EMERALD AND DIAMOND DRESS-SET,
MARGHERITA BURGNER**

Onyx panels, circular-cut emeralds, circular-cut diamonds,
cufflinks 1.6 cm, buttons 1.3 cm, signed Margherita Burgener,
maker's mark, grey Margherita Burgener case

£4,000-6,000

US\$5,200-7,800
€4,700-6,900



84

85

**MID-20TH CENTURY ROCK CRYSTAL AND RUBY DRESS
SET**

Carved rock crystal, circular-cut rubies, cufflinks and buttons
1.4 cm, studs 1.0 cm, red case

£2,000-3,000

US\$2,600-3,900
€2,400-3,500



85



86

86

ART DÉCO ONYX AND DIAMOND EARRINGS, JANESICH

Onyx panels and drops, old and single-cut diamonds, French marks, circa 1920, 6.3 cm, signed Janesich, no. 299

£10,000-15,000

US\$13,000-19,000
€12,000-17,000



87

87

ART DÉCO DIAMOND BRACELET

Single-cut diamonds, circa 1920, 8.0 cm

£6,000-8,000

US\$7,800-10,000
€7,000-9,200



89



88



90

THE PROPERTY OF AN IMPORTANT NOBLE FAMILY

89
EARLY 20TH CENTURY DIAMOND NECKLACE

Old and rose-cut diamonds, circa 1910, length 44.0 cm, central panel 9.8 cm

£40,000-50,000

US\$53,000-65,000
€47,000-58,000

VARIOUS PROPERTIES

90
BELLE ÉPOQUE OPAL AND DIAMOND PENDANT

Oval opal, old-cut diamonds, circa 1910, 2.7 cm

£4,000-6,000

US\$5,200-7,800
€4,700-6,900

88
**ART DÉCO ENAMEL AND DIAMOND JABOT PIN,
LACLOCHE FRÈRES**

Old, single and rose-cut diamonds, black enamel, platinum and gold (French marks), circa 1915, 10.8 cm, signed Lacluche Frères, no. 66709 (indistinct)

£5,000-7,000

US\$6,500-9,100
€5,800-8,100



91

**91
DIAMOND RING**

Circular-cut diamond of 3.02 carats, ring size R

£12,000-18,000

US\$16,000-23,000
€14,000-21,000



92

**†92
DIAMOND EARRINGS**

Pear-shaped and circular-cut diamonds, 6.4 cm

£18,000-22,000

US\$24,000-29,000
€21,000-25,000



93

**†93
ILLUSION-SET DIAMOND BANGLER**

Circular and baguette-cut diamonds, inner circumference 16.8 cm

£7,000-9,000

US\$9,100-12,000
€8,100-10,000



94

**94
COLOURED SAPPHIRE AND DIAMOND EARRINGS,
TIFFANY & CO.**

Oval-cut pink and purple sapphires, circular-cut and pear-shaped diamonds, 3.9 cm, signed Tiffany & Co.

£5,000-7,000

US\$6,500-9,100
€5,800-8,100



95

†95

TOURMALINE AND DIAMOND FRINGE NECKLACE

Briolette-cut pink tourmalines, circular-cut diamonds, 41.2 cm

£16,000-18,000

US\$21,000-23,000
€19,000-21,000

†96

TOURMALINE AND DIAMOND RING

Cushion-shaped pink tourmaline of 10.73 carats, fancy and circular-cut diamonds, ring size M

£5,500-7,500

US\$7,200-9,700
€6,400-8,600



96



97
DIAMOND SUITE, ASPREY

Marquise and circular-cut diamonds, necklace 38.1 cm,
bracelet 18.7 cm, earrings 6.2 cm, signed Asprey

£13,000-15,000

US\$17,000-19,000
€16,000-17,000

98

DIAMOND RING

Rectangular-cut diamond of 2.60 carats, circular-cut diamonds,
French mark, ring size K

£7,000-10,000

US\$9,100-13,000
€8,100-12,000



98

99

SAPPHIRE AND DIAMOND RING

Octagonal-cut sapphire of 10.53 carats, baguette-cut diamonds,
gold (London hallmark), 1976, ring size N

£9,000-11,000

US\$12,000-14,000
€11,000-13,000



99

***100**

DIAMOND EARRINGS

Pear brilliant-cut, marquise and circular-cut diamonds, 2.8 cm

GIA, 2016, report no. 2227771702: 0.40 carats, D colour, VVS1 clarity

GIA, 2016, report no. 2237305606: 0.40 carats, D colour, VVS1 clarity

GIA, 2017, report no. 7271164920: 0.35 carats, D colour, VVS2 clarity

GIA, 2017, report no. 1182449018: 0.34 carats, D colour, VVS1 clarity

GIA, 2017, report no. 6261900114: 0.33 carats, D colour, VS2 clarity

GIA, 2017, report no. 2274013035: 0.32 carats, D colour, VVS2 clarity

GIA, 2017, report no. 7266898536: 0.31 carats, D colour, VS1 clarity

GIA, 2017, report no. 6262886158: 0.31 carats, E colour, VVS1 clarity

GIA, 2017, report no. 6272114277: 0.31 carats, D colour, VS2 clarity

GIA, 2017, report no. 6187193839: 0.30 carats, D colour, VVS1 clarity

£8,500-10,500

US\$12,000-14,000
€9,900-12,000



100



101

101

CULTURED PEARL AND DIAMOND EARRINGS

Drop-shaped cultured pearls, marquise, baguette, calibr , circular and single-cut diamonds, 5.2 cm

£4,000-6,000

US\$5,200-7,800
€4,700-6,900



102

102

EMERALD AND DIAMOND BRACELET

Square-cut emeralds, circular and baguette-cut diamonds, 18.0 cm
Gem & Pearl Laboratory, 2019, report no. 17242: samples Colombia, minor to moderate clarity enhancement

£23,000-28,000

US\$30,000-36,000
€27,000-32,000



103

103

DIAMOND RING

Rectangular-cut diamond of 3.19 carats, baguette and circular-cut diamonds, ring size M

£6,000-8,000

US\$7,800-10,000
€7,000-9,200

104

DIAMOND EARRINGS

Circular and marquise-cut diamonds, 4.1 cm

£7,000-10,000

US\$9,100-13,000
€8,100-12,000



104

105

DIAMOND RING

Circular-cut diamond of 9.02 carats, ring size K ½

£30,000-50,000

US\$40,000-65,000
€35,000-58,000



105

106

EMERALD AND DIAMOND RING

Rectangular-cut emerald of 2.46 carats, old-cut diamonds, French import mark, ring size M

Gem & Pearl Laboratory, 2019, report no. 17144: Colombia, no evidence of clarity enhancement

£16,000-18,000

US\$21,000-23,000
€19,000-21,000



106



107

107

COLOURED DIAMOND AND DIAMOND RING

Fancy Green pear modified brilliant-cut diamond of 1.01 carats, circular-cut diamonds, ring size M

GIA, 2016, report no. 7226226848: 1.01 carats, Fancy Green colour, I1 clarity

£25,000-30,000

US\$33,000-39,000
€29,000-35,000



109

108

COLOURED DIAMOND RING

Fancy Light Pink modified shield brilliant-cut diamond of 0.77 carats, circular-cut pink diamonds, ring size N

GIA, 2003, report no. 12346994: 0.77 carats, Fancy Light Pink colour

Please note that this report is over 5 years old and may require an update

Please note that the remaining coloured diamonds have not been tested for natural colour origin

£8,000-12,000

US\$11,000-16,000
€9,300-14,000



108

109

COLOURED DIAMOND RING

Fancy Blue-Green cushion modified brilliant-cut diamond of 0.67 carats, ring size L½

GIA, 2019, report no. 2195954437: 0.67 carats, Fancy Blue-Green colour, VS2 clarity

£10,000-15,000

US\$13,000-19,000
€12,000-17,000



110

110

COLOURED DIAMOND AND DIAMOND RING

Fancy Vivid Orangy Yellow pear modified brilliant-cut diamond of 2.00 carats, pear-shaped diamond of 1.57 carats, circular-cut diamonds, French import mark, ring size M½

GIA, 2017, report no. 2268810246: 2.00 carats, Fancy Vivid Orangy Yellow colour, VS2 clarity

£50,000-70,000

US\$66,000-91,000
€58,000-81,000





111

111
DIAMOND 'SERPENT BOHÈME' NECKLACE, BOUCHERON

Circular-cut diamonds, 36.5 cm, signed Boucheron

£6,500-8,500

US\$8,500-11,000
 €7,600-9,900

112
MOTHER-OF-PEARL AND DIAMOND BUTTERFLY BROOCH AND COLOURED SAPPHIRE AND DIAMOND DRAGONFLY BROOCH, VAN CLEEF & ARPELS

Mother-of-pearl panels, circular-cut diamonds, gold (French, Swiss and European Convention marks), signed VCA for Van Cleef & Arpels; circular-cut yellow sapphires and diamonds, gold (French, Swiss and European Convention marks), signed Van Cleef & Arpels, blue Van Cleef & Arpels pouch

£4,500-5,500

US\$5,900-7,200
 €5,300-6,400

Please note that this lot will be subject to US Fish & Wildlife regulations if it is imported into the USA



112





113

DIAMOND 'SERPENT BOHÈME' SUITE, BOUCHERON

Circular-cut diamonds, French marks, necklace 38.0 cm, bracelet 21.8 cm, earrings 2.2 cm, signed Boucheron, maker's mark, necklace no. A296 1021 and A296490, bracelet no. A296 866, earrings no. A300 998, blue and green Boucheron pouches

£13,000-15,000

US\$17,000-20,000
€16,000-17,000



114

114
RUBY AND DIAMOND PENDANT NECKLACE,
VAN CLEEF & ARPELS

Oval-cut ruby, square, circular and calibr -cut diamonds, French marks, necklace 39.0 cm, pendant 3.5 cm, signed Van Cleef & Arpels, no. 23820

£15,000-20,000

US\$20,000-26,000
 €18,000-23,000



115

115
ONYX AND DIAMOND EARRINGS, VAN CLEEF & ARPELS

Circular buff-top onyx, circular-cut diamonds, 1.8 cm, signed Van Cleef & Arpels N.Y., no. 44095.4

£4,000-6,000

US\$5,200-7,800
 €4,700-6,900



116



117

116
'CELTICA' BANGLE, BULGARI

Sprung, inner circumference 16.5 cm, signed Bulgari

£6,000-8,000

US\$7,900-10,000
€7,000-9,200

117
DIAMOND 'CELTICA' RING, BULGARI

Circular-cut diamonds, sprung, ring size K, signed Bulgari

£2,500-3,500

US\$3,300-4,600
€2,900-4,000



118

THE PROPERTY OF A LADY

118

COLOURED DIAMOND AND DIAMOND RING

Fancy Light Yellowish Brown round brilliant-cut diamond of 10.71 carats, circular-cut diamonds, ring size D½, sizing beads
GIA, 2014, report no. 2165142546: 10.71 carats, Fancy Light Yellowish Brown colour, VS1 clarity

£50,000-70,000

US\$66,000-91,000
€58,000-81,000



119

VARIOUS PROPERTIES

119

DIAMOND EARRINGS, GERARD

Circular-cut diamonds, French marks, 7.0 cm, signed M Gerard, no. 1561

£6,000-8,000

US\$7,900-10,000
€7,000-9,200





120
NECKLACE AND EARRING SET, LALAOUNIS

Necklace; 42.0 cm, earrings; gold (London hallmarks), 2000, 3.0 cm, both signed Lalaounis, maker's mark, no. A21, red Lalaounis pouch (earrings)

£3,500-4,500

US\$4,600-5,800
€4,100-5,200



121



122

121
CHARM BRACELET, HÈRMES

Suspending charms modelled as the 'Jige', the 'Kelly', the 'Constance' and the 'Bolide' handbags, French marks, 17.6 cm, 91.4 gr., signed Hermes, no. 14682

£10,000-15,000

US\$13,000-19,000
€12,000-17,000

THE PROPERTY OF A NOBLE EUROPEAN FAMILY

122
DIAMOND RING, CHAUMET

Circular-cut diamond, French marks, ring size M ½, signed Chaumet Paris, maker's mark

£7,000-10,000

US\$9,100-13,000
€8,100-12,000



BY APPOINTMENT
TO H.M. THE QUEEN
JEWELLERS AND GOLDSMITHS

Cartier Ltd

CARTIER S.A. - 13 RUE DE LA PAIX
PARIS

CARTIER INC. - 653 FIFTH AVENUE
NEW YORK

175 - 176 NEW BOND STREET
20 ALBEMARLE STREET
LONDON W.1.

TELEGRAMS PRECIOUS - WESDO - LONDON
TELEPHONES HYDE PARK 6962 (5 LINES)

27th January, 1958.



SH

encl.

DIRECTORS: J.J. CARTIER (FRENCH) - E. BELLENGER (FRENCH) - L. WATER (ENGLAND) - MADAME CLAUDEL (FRENCH)

CARTIER

Lots 123-165



123



124

VARIOUS PROPERTIES

123

MID-20TH CENTURY CHALCEDONY, EMERALD AND RUBY DUCK BROOCH, CARTIER

Carved chalcedony, circular cabochon ruby, baguette-cut emeralds, 4.0 cm, signed Cartier, no. K6080, original red Cartier case

Cartier: four original gouache designs and a letter dated 27th January 1958 referring to the three pink tourmaline brooch renderings as suggested designs for the private commission of a gem-set bird brooch

£4,000-6,000

US\$5,300-7,800
€4,700-7,000

124

RUBY, EMERALD AND DIAMOND 'LOVEBIRD' BROOCH, CARTIER

Circular-cut ruby, emerald and diamonds, French marks, 3.7 cm, signed Cartier Paris, maker's mark, no. 019182

£5,000-7,000

US\$6,500-9,100
€5,800-8,100

In addition to the hammer price, a Buyer's Premium (plus VAT) is payable. Other taxes and/or an Artist Resale Royalty fee are also payable if the lot has a tax or λ symbol. Check Section D of the Conditions of Sale at the back of this catalogue.

67



125

**125
DIAMOND 'PANTHÈRE' PENDANT NECKLACE AND BRACELET,
CARTIER**

Circular-cut diamonds, French marks, necklace 41.0 cm, pendant 5.0 cm, bracelet 8.0 cm, signed Cartier, necklace no. 641053, pendant no. 923567, bracelet no. HPS 1248, red Cartier pouches Cartier, 1993: certificate of authenticity (necklace)

£6,000-8,000

US\$7,900-10,000
€7,000-9,200

**126
CHARM BRACELET, CARTIER**

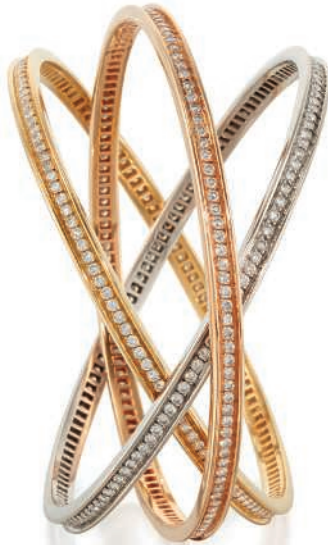
Circular-cut emerald, gold (French, Swiss and European Convention marks), five detachable charms comprising an elephant pendant, a 'Trinity' ring, a 'Panthère' pendant, a 'Love' ring and a double 'C' logo, 19.0 cm, bracelet and each charm signed Cartier, bracelet no. 709485, charms no. 703622, 702658, 697440, 71139 and 700261 respectively, red Cartier case

£2,500-3,500

US\$3,300-4,600
€2,900-4,100



126



127

127
18CT GOLD AND DIAMOND 'TRINITY' BANGLE, CARTIER

Circular-cut diamonds, gold (European Convention marks and French marks), inner circumference 20.6 cm, signed Cartier, no. 700809

£8,000-12,000

US\$11,000-16,000
€9,300-14,000

128
CHRYSOPRASE AND DIAMOND BRACELET, CARTIER

Carved chrysoprase, circular-cut diamonds, French marks, 19.0 cm, signed Cartier, numbered 917547

£4,000-6,000

US\$5,200-7,700
€4,700-6,900



128



129

129

**RUBY, SAPPHIRE, COLOURED SAPPHIRE, PERIDOT AND
DIAMOND BROOCH, ALDO CIPULLO FOR CARTIER**

Oval-cut rubies, cabochon ruby, sapphire, yellow sapphire and peridot, circular-cut diamonds, circa 1970, 4.6 cm, signed A. Cipullo Cartier, no. 388

£8,000-10,000

US\$11,000-13,000
€9,300-12,000



130

130

MID-20TH CENTURY DIAMOND RING, CARTIER

Single and old-cut diamonds, ring size N, signed Cartier, red Cartier case

£2,500-4,500

US\$3,300-5,900
€2,900-5,200



131
DIAMOND 'C DE CARTIER' NECKLACE AND BRACELET SET,
CARTIER

Circular-cut diamonds, gold (French and European Convention marks), necklace 39.0 cm, bracelet 18.0 cm, signed Cartier, maker's mark, necklace no. 770805, bracelet no. 783593

£24,000-28,000

US\$32,000-36,000
€28,000-32,000



132

NECKLACE AND BRACELET SET, CARTIER

French marks, necklace 42.5 cm, bracelet 18.0 cm, signed Cartier,
no. 708383 and 632815A respectively, red Cartier case

Cartier, 1995: certificate of authenticity (bracelet)

£2,500-3,500

US\$3,300-4,500

€2,900-4,000



~ 133

AMETHYST, CORAL AND DIAMOND 'LES DÉLICES DE GOA' RING, CARTIER

Amethyst and coral beads, circular-cut diamonds, French marks, ring size M, signed Cartier, no. 62544A

£6,000-8,000

US\$7,900-10,000
€7,000-9,300



133



134

134

DIAMOND RING, CARTIER

Rectangular-cut diamond, French marks, ring size M½, signed Cartier, no. 690114, red Cartier pouch
Cartier, 1996: certificate of authenticity

£10,000-12,000

US\$13,000-15,000
€12,000-14,000

135

DIAMOND 'PANTHÈRE' PENDANT, CARTIER

Marquise and circular-cut diamonds, circa 1984, 6.0 cm, signed Cartier, no. WX5956, red Cartier pouch, *engraved to the tail '20.11.1984'*

£2,500-3,500

US\$3,300-4,500
€2,900-4,000



135



136



137

136

DIAMOND NECKLACE, CARTIER

Circular-cut diamonds, French marks, 40.0 cm, signed Cartier, no. 627728

£6,000-8,000

US\$7,800-10,000
€7,000-9,200

137

DIAMOND EARRINGS, CARTIER

Circular-cut diamonds, 2.0 cm, signed Cartier London, no. P6326

£6,000-8,000

US\$7,800-10,000
€7,000-9,200

138

EMERALD AND DIAMOND RING AND SAPPHIRE AND DIAMOND RING, CARTIER

Oval cabochon emerald and sapphire, circular-cut diamonds, French marks, circa 1994, ring size M, signed Cartier, no. C 25086 and C 24962 respectively, red Cartier box

Cartier, 1994: certificates of authenticity

£2,500-3,500

US\$3,300-4,600
€2,900-4,100



138



139

139

SAPPHIRE, ONYX, EMERALD AND DIAMOND 'PANTHÈRE' EARRINGS, CARTIER

Buff-top sapphires and onyx, pear-shaped emeralds, circular-cut diamonds, French marks, 2.3 cm, signed Cartier, numbered 164372

£10,000-15,000

US\$13,000-19,000
€12,000-17,000

140

ONYX AND DIAMOND 'NIGERIA' RING, CARTIER

Cabochon onyx, circular-cut diamonds, French marks, ring size N, signed Cartier (partially lost), no. 604015, in red Cartier case

£6,000-8,000

US\$7,800-10,000
€7,000-9,200



140

141

GOLD 'TANK AMERICAINE' CHRONOGRAPH WRISTWATCH, CARTIER

Gold (European Convention marks), quartz movement, case width 2.6 cm, gold Cartier buckle, signed Cartier, no. 1730, CC598382

£4,000-6,000

US\$5,300-7,800
€4,700-7,000

Please note that the strap is for illustration purposes only and will not be sold together with the watch



141



142

142

GOLD DIAMOND 'PASHA' WRISTWATCH, CARTIER

Circular-cut diamonds, gold (Swiss and European Convention marks), additional links, automatic movement, case width 3.2 cm, inner circumference 14.5 cm, signed Cartier, maker's marks, no. 2397 339386MG, red Cartier case

£6,000-8,000

US\$7,800-10,000
€7,000-9,200

143

GOLD AND SAPPHIRE CUFFLINKS, CARTIER

Cabochon sapphires, gold (European Convention marks), 3.8 cm, signed Cartier, no. E61282

£1,500-2,500

US\$2,000-3,200
€1,800-2,900



143



144

144

ELEPHANT EARRINGS, CARTIER

Circular-cut emeralds, French marks, 3.4 cm, signed Cartier, no. 655954, red Cartier pouches
Cartier, 1993: certificate of authenticity

£3,000-5,000

US\$4,000-6,500
€3,500-5,800

145

ELEPHANT CUFF, CARTIER

Circular-cut emeralds, French marks, sprung, inner circumference 16.0 cm, signed Cartier, no. 651749, red Cartier pouch
Cartier, 1994: certificate of authenticity

£8,000-12,000

US\$11,000-15,000
€9,300-14,000



145



146

146

GOLD 'TANK FRANÇAISE' CHRONOGRAPH WRISTWATCH, CARTIER

Gold (European Convention marks), quartz movement, case width 2.8 cm, inner circumference 14.6 cm, signed Cartier, no. 1830, MG261370, four additional links

£5,000-7,000

US\$6,500-9,100
€5,800-8,100



•Ω147

TWO MID-20TH CENTURY SILVER GILT AND ENAMEL FLOWER BASKETS WITH SILVER GILT WATERING CAN, CARTIER

Enamel, circa 1950, baskets 8.0 cm, watering can 8.5 cm, signed Cartier

£2,500-3,500

US\$3,300-4,600
€2,900-4,000



148

ART DÉCO AGATE AND SAPPHIRE DESK CLOCK, CARTIER

Carved agate, sugarloaf sapphires, mechanical movement,
7.5x7.5 cm, signed Cartier, no. 677, 6247 and 779,
original red Cartier case

£5,000-7,000

US\$6,600-9,100
€5,900-8,100



149

149
AMETHYST, TURQUOISE AND DIAMOND 'LES DÉLICIES DE GOA'
NECKLACE, CARTIER

Amethyst and turquoise beads, circular-cut diamonds, French marks,
 38.0 cm, signed Cartier, no. 74885A

£18,000-20,000

US\$24,000-26,000

€21,000-23,000



150

150
DIAMOND EARRINGS, CARTIER

Circular-cut diamonds, gold (Swiss assay marks and European
 Convention marks), 2.0 cm, signed Cartier, numbered 883616A

£4,000-6,000

US\$5,300-7,800

€4,700-7,000



151

~151

ONYX AND CORAL EARRINGS, ALDO CIPULLO FOR CARTIER

Square onyx panels, cabochon coral, circa 1973, 3.5 cm,
signed A. Cipullo Cartier

£4,000-6,000

US\$5,300-7,800
€4,700-7,000

152

**ONYX AND CARNELIAN EARRINGS, ALDO CIPULLO FOR
CARTIER**

Circular onyx panels, cabochon carnelians, circa 1973, 3.0 cm,
signed A. Cipullo Cartier

£4,000-6,000

US\$5,200-7,700
€4,700-6,900



152



153

DIAMOND NECKLACE AND BRACELET SET, CARTIER

Circular-cut diamonds, French marks, necklace 37.5 cm,
bracelet 17.0 cm, signed Cartier, necklace no. 228455,
bracelet no. 227909, red Cartier case

£13,000-17,000

US\$17,000-22,000

€15,000-20,000



154

**MID-20TH CENTURY SAPPHIRE, EMERALD AND DIAMOND
DRESS RING, CARTIER**

Circular-cut pink sapphires, sapphires, emeralds and diamonds,
French marks, circa 1960, ring size P, signed Cartier Paris

£7,000-9,000

US\$9,100-12,000
€8,100-10,000



154



155

155

MID-20TH CENTURY DIAMOND BRACELET, CARTIER

Circular-cut diamonds, 17.2 cm, signed Cartier, no. P1479,
red Cartier case

£10,000-12,000

US\$14,000-16,000
€12,000-14,000

156

DIAMOND RING, CARTIER

Circular-cut diamonds, French import mark, ring size L½,
maker's mark for Cartier

£6,000-8,000

US\$7,900-10,000
€7,000-9,200



156



157

157
EMERALD, ONYX, CULTURED PEARL AND DIAMOND
'PANTHÈRE' NECKLACE, CARTIER

Pear-shaped emeralds, buff-top onyx, cultured pearls, circular-cut diamonds, French marks, 41.5 cm, signed Cartier, no. 607401, red Cartier pouch

£20,000-30,000

US\$27,000-39,000
 €24,000-35,000



158

(side view)

158
CULTURED PEARL AND DIAMOND RING, CARTIER

Cultured pearl, circular-cut diamonds, French marks, ring size L, signed Cartier, no. 860208

£7,500-9,500

US\$9,700-12,000
 €8,700-11,000

159

ONYX AND DIAMOND 'PANTHÈRE' EARRINGS, CARTIER

Buff-top onyx, circular-cut diamonds, French marks, 3.50 cm, signed Cartier, no. 611310, red Cartier pouch

£20,000-30,000

US\$27,000-39,000
€24,000-35,000



159



160

160

WHITE GOLD, DIAMOND AND EMERALD 'PANTHÈRE' WRISTWATCH, CARTIER

Circular-cut diamonds, pear-shaped emerald, gold (Swiss and European Convention marks), additional links, quartz movement, case width 2.8 cm, inner circumference 14.0 cm, signed Cartier, maker's marks, no. 2323 DM11030, red Cartier case

£8,000-10,000

US\$11,000-13,000
€9,300-12,000

160A

EMERALD AND DIAMOND RING, CARTIER

Rectangular-cut emerald of 4.65 carats, triangular-shaped diamonds, ring size K, signed Cartier, no. 17789

SSEF, 2018, report no. 103911: 4.65 carats, Afghanistan, minor oil

AGL, 2018, report no. 1096995: 4.65 carats, Afghanistan, minor clarity enhancement

£30,000-40,000

US\$39,000-52,000
€35,000-46,000



160A



161

THE PROPERTY OF A LADY

161

ART DÉCO DIAMOND BROOCH, CARTIER

Circular, rose, baguette and old-cut diamonds, circa 1925, 3.6 cm, signed Cartier London

£8,000-12,000

US\$11,000-16,000

€9,400-14,000



162

VARIOUS PROPERTIES

Ω162

A FINE ART DÉCO TOURMALINE, ENAMEL AND DIAMOND BROOCH, CARTIER

Rectangular-cut tourmalines, black enamel, circular and single-cut diamonds, 1928, 4.8 cm, signed Cartier, no. 3228

Cartier: Certificate of Authenticity

£20,000-30,000

US\$27,000-39,000

€24,000-35,000





163

MID-20TH CENTURY DIAMOND RING, CARTIER

Circular, square, marquise, baguette and old-cut diamonds, circa 1950, ring size O, signed Cartier London, no. 5233, red Cartier case

£8,000-12,000

US\$11,000-16,000
€9,300-14,000



163

164

EARLY 20TH CENTURY DIAMOND BROOCH, CARTIER

Old and rose-cut diamonds, gold (French marks), probably part of a larger suite, circa 1910, 7.1 cm, signed Cartier New York

£7,000-9,000

US\$9,100-12,000
€8,100-10,000



164



165

THE PROPERTY OF A LADY

165

ART DÉCO DIAMOND BRACELET, CARTIER

Circular and tapered baguette-cut diamonds, 18.6 cm, circa 1925, signed Cartier, no. 319 (indistinct), later red Cartier case

£30,000-40,000

US\$39,000-52,000
€35,000-46,000

In addition to the hammer price, a Buyer's Premium (plus VAT) is payable. Other taxes and/or an Artist Resale Royalty fee are also payable if the lot has a tax or λ symbol. Check Section D of the Conditions of Sale at the back of this catalogue.



166

PROPERTY FROM THE COLLECTION OF
THE LATE LEONARD AND ROXANNE ROSOMAN

166

RUBY AND SAPPHIRE NECKLACE, BUCCELLATI

Circular-cut rubies and sapphires, 38 cm, signed Buccellati

£4,000-6,000

US\$5,300-7,800
€4,700-7,000

PROVENANCE:

Christie's are delighted to be offering jewels from the private collection of the artist Leonard Rosoman (1913-2012) and his wife Roxanne (1937-2018).

Leonard Rosoman exhibited extensively, and his work hangs in national collections including the Tate, the National Portrait Gallery, the Imperial War Museum and the British Museum.



167

VARIOUS PROPERTIES

167

DIAMOND RING

Circular-cut diamond of 4.66 carats, ring size M

£13,000-17,000

US\$17,000-22,000
€15,000-20,000

168

RUBY AND SAPPHIRE CUFFLINKS, VAN CLEEF & ARPELS

Circular-cut rubies and sapphires, French marks, 2.9 cm, signed Van Cleef & Arpels, no. 83085

£3,000-5,000

US\$4,000-6,500
€3,500-5,800



168



169

169

SAPPHIRE AND DIAMOND EARRINGS, BUCCELLATI

Heart-shaped sapphires, circular-cut diamonds, French marks, 5.5 cm, signed Federico Buccellati

£8,000-12,000

US\$11,000-16,000
€9,300-14,000

PROPERTY FROM THE COLLECTION OF
THE LATE LEONARD AND ROXANNE ROSOMAN

170

DIAMOND BANGLE, BUCCELLATI

Circular-cut diamonds, inner circumference 16.5 cm, signed Buccellati, original navy silk Buccellati case

£7,000-9,000

US\$9,200-12,000
€8,200-10,000



170



171

VARIOUS PROPERTIES

171

INDIAN ENAMEL AND DIAMOND EARRINGS

Polychrome enamel, closed-set flat-cut diamonds, 6.6 cm

£18,000-25,000

US\$24,000-33,000
€21,000-29,000

172

ALLIGATOR CUFF BRACELET, DAVID WEBB

Cabochon chrysoprase, inner circumference 15.5 cm, signed Webb

£10,000-15,000

US\$13,000-19,000
€12,000-17,000

LITERATURE:

Cf. R. Peltason, *David Webb The Quintessential American Jeweler*, Assouline, New York, 2013, p. 168-169 for similar repoussé cuffs

David Webb began producing his repoussé animal cuffs in 1968; that autumn within a four-week period Webb had designed and created the double fish, horse, snake, double lion, ram and leopard cuffs. It was not until a year after the designer's death in 1976 that further motifs were introduced to the collection including the armadillo and alligator.



172



173

173

COLOURED SAPPHIRE AND DIAMOND RING

Oval-cut pink sapphire of 9.35 carats, triangular-cut diamonds, French marks, ring size L½

Gem & Pearl Laboratory, 2019, report no. 17146: Sri Lanka, no evidence of heat treatment

£24,000-28,000

US\$32,000-36,000
€28,000-32,000



174

174
INDIAN TOURMALINE, EMERALD, CULTURED PEARL AND
DIAMOND NECKLACE

Faceted bead and vari-shaped flat-cut tourmalines, flat-cut emeralds, green glass, cultured pearls, circular and flat-cut diamonds, the pendant reverse with white, red, green and blue enamel floral decoration, plated cord backchain, minimum length of beads 47.5 cm, adjustable length

£10,000-15,000

US\$14,000-20,000
 €12,000-17,000

175
INDIAN ENAMEL AND DIAMOND BRACELET

Foil-backed flat cut-diamonds, the reverse decorated with red, blue and green enamel, 18.0 cm

£2,000-3,000

US\$2,700-3,900
 €2,400-3,500



175



176

176
EMERALD AND DIAMOND BANGLE, BUCCELLATI

Cabochon emeralds, rose-cut diamonds, inner circumference 18.7 cm, signed M. Buccellati

£8,000-12,000

US\$11,000-16,000
 €9,300-14,000



177



PROPERTY FROM THE COLLECTION OF
 THE LATE LEONARD AND ROXANNE ROSOMAN

177
EMERALD AND DIAMOND BROOCH AND EARRING SET, BUCCELLATI

Cabochon emeralds, circular-cut diamonds, brooch 5.8 cm, earrings 4.5 cm, signed Buccellati, brown leather Buccellati cases

£4,000-6,000

US\$5,300-7,800
 €4,700-7,000



VARIOUS PROPERTIES

178

NECKLACE AND BRACELET SET, BUCCELLATI

Textured, necklace 44.0 cm, bracelet 20.5 cm, signed M. Buccellati

£5,000-7,000

US\$6,500-9,000
€5,800-8,100



179

179
VICTORIAN RUBY AND DIAMOND BANGLE

Oval and old-cut rubies, old-cut diamonds, gold (French marks), circa 1890, inner circumference 15.8 cm, green case

£8,000-12,000

US\$11,000-16,000
 €9,300-14,000



180

~180
PAIR OF INDIAN MULTI-GEM AND DIAMOND NAVARATNA EARRINGS

Ruby beads, carved cabochons including ruby, sapphire, coral, emerald and garnet, cultured pearls, flat and circular-cut diamonds, 6.5 cm

Please note that the pearls have not been tested for natural origin

£7,000-10,000

US\$9,200-13,000
 €8,200-12,000



181

181
INDIAN PEARL, ENAMEL AND DIAMOND NECKLACE

Vari-shaped foil-backed flat-cut diamonds, pearls, pink, green and white enamel to the front and reverse, silk cord, adjustable length, gem-set panel 32.0 cm

Please note that the pearls have not been tested for natural origin

£10,000-15,000

US\$14,000-20,000
 €12,000-17,000



182

182
LATE 19TH CENTURY RUBY, EMERALD, PEARL AND DIAMOND COCKATIEL BROOCH

Circular cabochon and vari-shaped rubies, vari-shaped emeralds, seed pearls, rose-cut diamonds, later clip fitting, circa 1880, 4.4 cm, red leather fitted case

Please note that the pearls have not been tested for natural origin

£3,000-4,000

US\$4,000-5,200
 €3,500-4,600



183

*183

COLOURED DIAMOND EARRINGS

Fancy Yellow cushion modified brilliant-cut diamonds of 4.03 and 4.01 carats, 0.8 cm

GIA, 2018, report no. 6282793450: 4.03 carats, Fancy Yellow colour, VS2 clarity

GIA, 2018, report no. 2191242457: 4.01 carats, Fancy Yellow colour, VVS1 clarity

£40,000-50,000

US\$53,000-65,000
€47,000-58,000

184

TURQUOISE AND DIAMOND BROOCH, SCHLUMBERGER FOR TIFFANY & CO.

Oval cabochon turquoise, circular-cut diamonds, 6.6 cm, signed Schlumberger and Tiffany & Co., black Tiffany & Co. box

£5,000-7,000

US\$6,600-9,100
€5,800-8,100



184



185

185

DIAMOND DRESS RING

Circular-cut diamond of 4.03 carats, circular and tapered baguette-cut diamonds, ring size O

£15,000-20,000

US\$20,000-26,000
€18,000-23,000



186

**MID-20TH CENTURY TURQUOISE, RUBY AND DIAMOND SET,
MARCHAK**

Circular and pear shape rubies, cabochon turquoise, circular-cut diamonds, French marks, circa 1960, necklace 36.4 cm, earrings 3.0 cm, necklace signed Marchak, no. 43649, earring fittings later replaced

£12,000-18,000

US\$16,000-23,000
€14,000-21,000

SCOTTISH GOLD

Created using 22 carat Scottish Gold, these earrings are the first in a series of celebratory jewels to be produced by the Edinburgh jeweller and Royal Warrant holders, Hamilton & Inches. Having been granted the rights to the production of Cononish Gold Mine, at the foot of Ben Lui in the Highlands of Scotland, Hamilton & Inches's team of craftsmen are hand making modern jewels in the firm's 153 year old workshop; bringing together Scotland's goldsmithing heritage with the only known source of commercially mined Scottish Gold.





Hamilton & Inches goldsmith.



Scottish Gold in the host rock from Cononish Gold Mine.



† 187

**SCOTTISH 22 CARAT GOLD, SPINEL, COLOURED
DIAMOND AND DIAMOND EARRINGS,
HAMILTON & INCHES**

Vari-cut multi-coloured spinels, pear-shaped green diamonds, circular-cut diamonds, gold (Edinburgh hallmarks), 2019, 7.7 cm, maker's mark H & I for Hamilton & Inches, purple Hamilton & Inches case

£8,000-12,000

US\$11,000-16,000
€9,300-14,000



Ω188

RUBY NECKLACE

Old cushion and oval-cut rubies, 45.0 cm

SSEF, 2018, report no. 102570: 39 rubies of declared total weight
56.55 carats, Burma (Myanmar), no indications of heating

£100,000-120,000

US\$130,000-150,000

€120,000-140,000



189
PAIR OF RETRO CITRINE AND DIAMOND CLIP BROOCHES,
SEAMAN SCHEPPS

Oval-cut and heart-shaped citrines, circular-cut diamonds,
circa 1945, 4.8 cm, signed Seaman Schepps

£4,000-6,000

US\$5,200-7,700
€4,700-6,900

190
RETRO DIAMOND VANITY CASE

Old-cut diamonds, silver gilt, opening to reveal two powder compacts,
two covered compartments and a lipstick holder compartment, circa
1940, 16.0x12.0x2.1 cm, numbered 06251, black silk carrying case,
blue F. Chiappe box

£2,500-4,500

US\$3,300-5,900
€2,900-5,200



190



191

191
FIVE-ROW CULTURED PEARL, RUBY AND DIAMOND
NECKLACE, VAN CLEEF & ARPELS

Round cultured pearls, cabochon ruby, circular and baguette-cut diamonds, 37.2 cm, signed Van Cleef & Arpels N.Y., no. 2345 S.O.

£20,000-30,000

US\$26,000-39,000
 €24,000-35,000



192

192
ONYX AND DIAMOND EARRINGS, VAN CLEEF & ARPELS

Circular-cut diamonds, circular-cut onyx, gold (French marks, London import marks), 1987, 4.0 cm, signed Van Cleef & Arpels, maker's mark (Pery et Fils), no. M35341

£15,000-20,000

US\$20,000-26,000
 €18,000-23,000





193

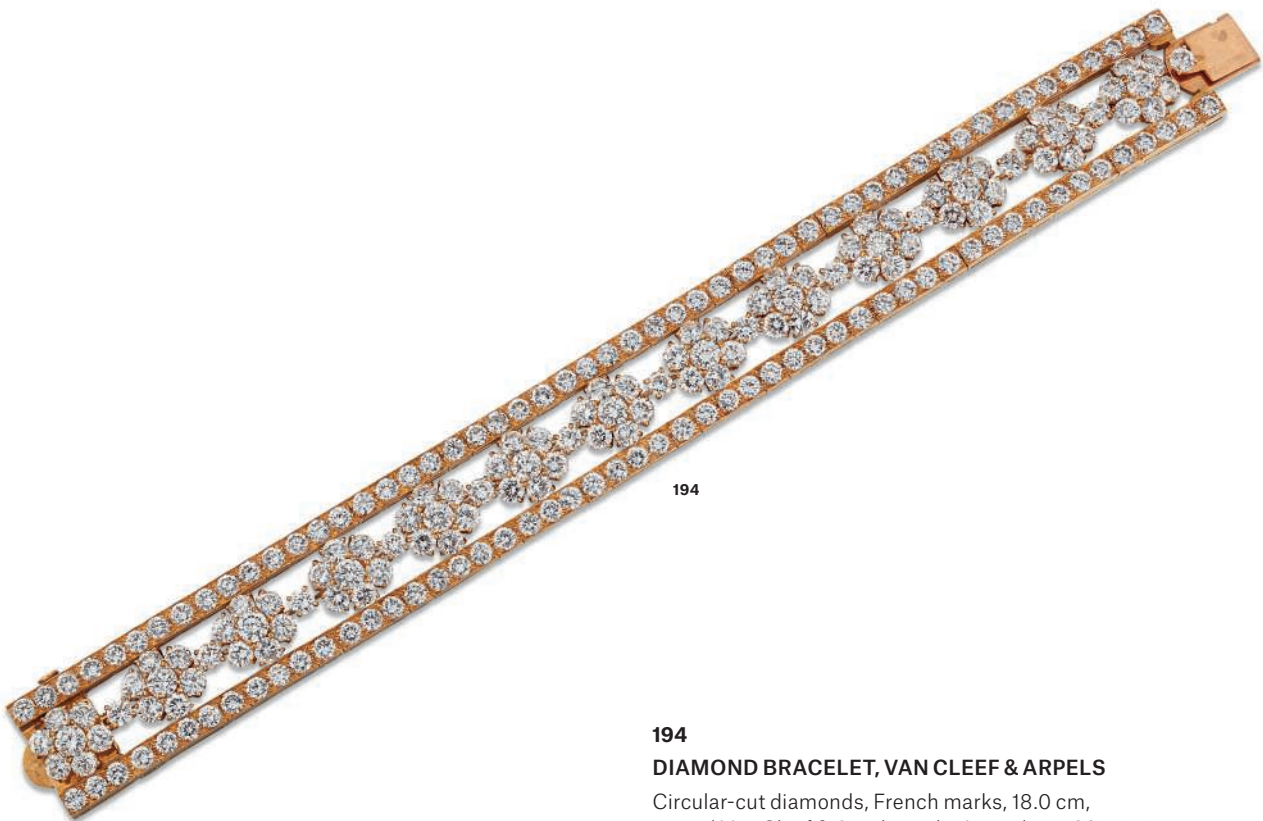
193

EMERALD AND DIAMOND BROOCH, VAN CLEEF & ARPELS

Pear-shaped emeralds, circular-cut diamonds, French marks, signed Van Cleef & Arpels, no. M 36378, green Van Cleef & Arpels box

£30,000-40,000

US\$39,000-52,000
€35,000-46,000



194

194

DIAMOND BRACELET, VAN CLEEF & ARPELS

Circular-cut diamonds, French marks, 18.0 cm, signed Van Cleef & Arpels, maker's mark, no. M39376

£45,000-55,000

US\$59,000-72,000
€53,000-64,000





195

195

EARLY 20TH CENTURY JADEITE JADE, SAPPHIRE AND DIAMOND BROOCH

Old and rose-cut diamonds, calibré-cut sapphires, carved jade, platinum (French marks), circa 1920, 5.7 cm, original fitted pink leather case

Gem & Pearl Laboratory, 2019, report no. 16884: jadeite jade, no evidence of treatment

£3,000-5,000

US\$3,900-6,400
€3,500-5,800



196

196

ART DÉCO SAPPHIRE AND DIAMOND BOW BROOCH

Calibré-cut sapphires, old, rose and single-cut diamonds, French marks, circa 1930, 6.2 cm

£8,000-12,000

US\$11,000-16,000
€9,300-14,000



197

197

EARLY 20TH CENTURY EMERALD AND DIAMOND BRACELET

Calibré-cut emeralds, old and rose-cut diamonds, platinum and gold, a few rose-cut diamonds and two emeralds deficient, circa 1905, 16.5 cm

£3,500-4,500

US\$4,600-5,800
€4,100-5,200

198

ART DÉCO DIAMOND EARRINGS

Old and rose-cut diamonds, circa 1930, 4.2 cm, blue fitted case

£15,000-20,000

US\$20,000-26,000

€18,000-23,000



198

199

MID 20TH CENTURY SAPPHIRE AND DIAMOND RING

Cushion-cut sapphire of 19.39 carats, old and circular-cut diamonds, one small diamond deficient, ring size K

Gem & Pearl Laboratory, 2019, report no. 17065: 19.39 carats, Sri Lanka, no evidence of heat treatment

£20,000-30,000

US\$26,000-39,000

€24,000-35,000



199

200

ART DÉCO ROCK CRYSTAL, SAPPHIRE AND DIAMOND DRESS SET, VAN CLEEF & ARPELS

Openwork fancy-cut rock crystal, calibré-cut sapphires and diamonds, French marks, additional fittings to convert cufflinks to buttons, circa 1935, cufflinks 1.1 cm, studs 0.8 cm, signed Van Cleef & Arpels, maker's mark, cufflinks no. 32782, one stud no. 32783, blue Van Cleef & Arpels box

£8,000-12,000

US\$11,000-15,000

€9,300-14,000



200



201



202



203

201

DIAMOND 'LOTUS' PENDANT, VAN CLEEF & ARPELS

Circular-cut diamonds, French marks, associated neckchain
42.0 cm, pendant 2.5 cm, maker's mark VCA for Van Cleef & Arpels,
no. BL41217

£7,000-9,000

US\$9,200-12,000
€8,200-10,000

202

**AMETHYST AND DIAMOND EARRINGS,
MARGHERITA BURGENER**

Drop shaped briolette-cut and mother-of pearl backed cabochon
amethysts, circular and single-cut diamonds, 5.0 cm, signed
Margherita Burgener, maker's mark, grey Margherita Burgener case

£5,000-7,000

US\$6,600-9,100
€5,900-8,100

203

DIAMOND 'CADENAS' WRISTWATCH, VAN CLEEF & ARPELS

Circular-cut diamonds, gold (Swiss and European Convention marks),
quartz movement, case width 2.4 cm, 17.0 cm, signed Van Cleef &
Arpels, maker's mark, no. 154647, blue Van Cleef & Arpels case
Van Cleef & Arpels, 2004: certificate of authenticity

£28,000-35,000

US\$37,000-46,000
€33,000-41,000

**Please note that this lot will be subject to US Fish & Wildlife
regulations if it is imported into the USA**

DIAMOND 'CADENAS' WRISTWATCH

BY VAN CLEEF & ARPELS

The 'Cadenas' wristwatch was first introduced by Van Cleef & Arpels in 1935, purportedly following a suggestion from the Duke and Duchess of Windsor to integrate a miniature watch dial within the lock or 'cadenas' of a bracelet.





204



205

204

DIAMOND NECKLACE

Circular-cut diamonds, central cluster detachable, 45.0 cm

£13,000-15,000

US\$17,000-19,000
€16,000-17,000

† 205

COLOURED DIAMOND AND DIAMOND RING

Fancy Light Yellow cushion modified brilliant-cut diamond of 4.55 carats, circular-cut diamonds, ring size L

GIA, 2018, report no. 5191290806: 4.55 carats, Fancy Light Yellow colour, VVS1 clarity

£18,000-22,000

US\$24,000-28,000
€21,000-25,000



206



207

206

RUBY AND DIAMOND EARRING AND PENDANT SET

Cushion, circular and oval-cut rubies, circular-cut diamonds, pendants detachable, earrings 6.5 cm, pendant 4.8 cm

£12,000-15,000

US\$16,000-19,000
€14,000-17,000

207

DIAMOND BRACELET, GRAFF

Circular-diamonds, French import marks, 16.5 cm, signed Graff, no. 3337, blue Graff case

£28,000-35,000

US\$37,000-45,000
€33,000-40,000



208

***208**

RUBY, PEARL AND DIAMOND EARRINGS

Calibré-cut rubies, bouton-shaped pearls, briolette, circular and single-cut diamonds, 6.6 cm

Please note that the pearls have not been tested for natural origin

£30,000-40,000

US\$40,000-52,000
€35,000-46,000



210

210

ART DÉCO DIAMOND RING

Old-cut diamond of 3.63 carats, single and baguette-cut diamonds, circa 1930, ring size M, with integrated sprung sizing hoop

£8,000-12,000

US\$11,000-15,000
€9,300-14,000



209

•209

EARLY 20TH CENTURY RUBY AND DIAMOND JABOT PIN, LACLOCHE FRÈRES, AND AN ENAMEL AND DIAMOND STICKPIN

Square-cut rubies, old-cut diamonds, partial French marks, circa 1925, 6.0 cm, signed Lacloche Frères, no. 9451; blue enamel, single-cut diamonds, 7.0 cm

£1,500-2,000

US\$2,000-2,600
€1,800-2,300



211

211

ART DÉCO RUBY AND DIAMOND RING

Old cushion-cut diamond of 5.12 carats, calibré-cut rubies, circa 1935, ring size O

£8,000-12,000

US\$11,000-15,000
€9,300-14,000

ALL LOTS HIGHLIGHTED WITH RED TITLES ARE OFFERED "WITHOUT RESERVE"





212

212
PLATINUM AND DIAMOND NECKLACE, TIFFANY & CO.

Circular-cut diamonds, platinum (London import marks), 1994,
40.0 cm, signed Tiffany & Co., maker's mark

£7,000-9,000

US\$9,100-12,000
€8,100-10,000



213

213
SAPPHIRE AND DIAMOND BOMBÉ RING

Cushion-shaped sapphire of 5.16 carats, circular-cut diamonds,
ring size N

Gem & Pearl Laboratory, 2019, report no. 17152: Sri Lanka, no
evidence of heat treatment

£9,000-13,000

US\$12,000-17,000
€11,000-15,000



214



215



216

214

SAPPHIRE AND DIAMOND EARRINGS

Oval-cut sapphires, circular-cut diamonds, 2.8 cm

£2,500-3,500

US\$3,300-4,500
€2,900-4,000

215

SAPPHIRE AND DIAMOND BRACELET

Oval-cut sapphires, circular-cut diamonds, 20.0 cm
Gübelin, 2017, report no. 17070032: Sri Lanka, no indications of heating

£13,000-16,000

US\$17,000-21,000
€16,000-18,000

Ω216

COLOURED DIAMOND AND DIAMOND RING

Fancy Yellow cushion modified brilliant-cut diamond of 4.05 carats, triangular-cut diamonds, finger size K

GIA, 2018, no. 1186997839: 4.05 carats, Fancy Yellow colour, IF clarity

£10,000-15,000

US\$13,000-19,000
€12,000-17,000

217 No Lot



218



219

**218
DIAMOND RING**

Rectangular-cut diamond of 7.56 carats, baguette-cut diamonds,
ring size L

GIA, 2019, report no. 10429547: 7.56 carats, F colour, VVS2 clarity

£150,000-200,000

US\$200,000-260,000
€180,000-230,000

**219
WHITE GOLD DIAMOND EARRINGS**

Marquise and circular-cut diamonds, gold (London hallmarks), 2019,
3.0 cm

£30,000-40,000

US\$39,000-52,000
€35,000-46,000



Leonardo Da Vinci Cut® Diamonds



The Leonardo Da Vinci Cut® was inspired by the famous late 15th century treatise *De Divina Proportione* by Luca Pacioli, illustrated with sixty drawings by Leonardo da Vinci. The great Master defines mathematically divine proportion also known as the Golden Ratio and discusses its application to art, architecture, letter design and the perception of human beauty. The Golden Ratio $\phi = 1,618$ is considered as the basis of harmonious proportion and when seen in nature immediately appeals to the human eye.

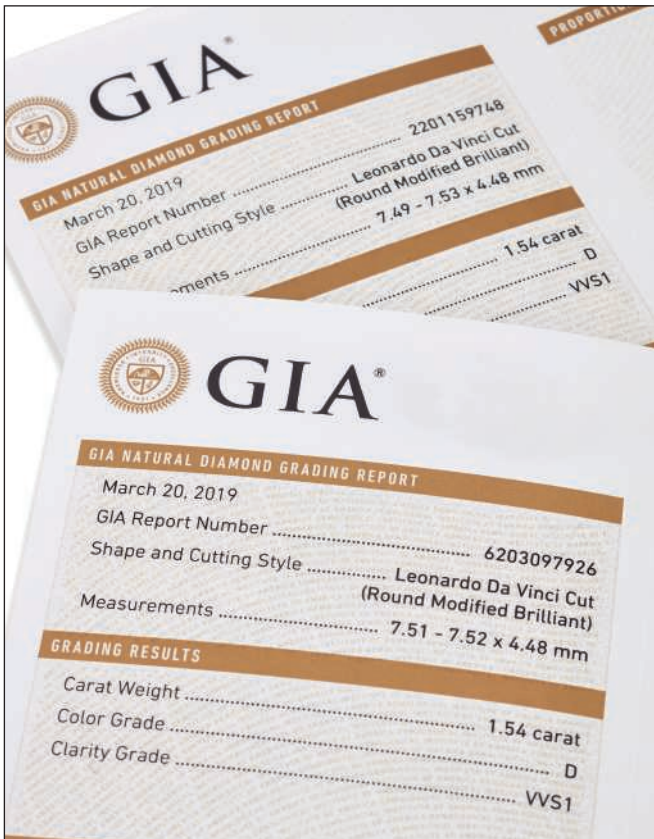
The involvement of the Biblioteca Leonardiana and the Museo Leonardiano of Vinci was fundamental to the research and development of this new cut. Each institution places a strong emphasis on continuing Leonardo da Vinci's legacy, supporting technical innovation and showcasing the immense talent

and ingenuity of the man. This year a series of events and exhibitions are taking place around the world to mark the 500th anniversary of Leonardo's death and this innovative diamond cut demonstrates that the influence of his life and work is still as relevant as ever.

The Leonardo Da Vinci Cut® has 57 facets and through a series of calculations based on the proportions of Leonardo's 'Vitruvian man' the stone has a high degree of scintillation, a unique pentagonal table, and in larger stones a kaleidoscopic overlay effect whereby three 'stars' appear visible to the naked eye.

The main Gemmological Institutes in the world have recognised the uniqueness of the Leonardo Da Vinci Cut®

Leonardodavincicut.com



†220

PAIR OF 'AUREA' DIAMOND EARRINGS

Leonardo Da Vinci-cut diamonds of 1.54 and 1.54 carats, 0.90 cm, presentation case

GIA, 2019, report no. 2201159748: 1.54 carats, D colour, VVS1 clarity

GIA, 2019, report no. 6203097926: 1.54 carats, D colour, VVS1 clarity

Leonardo Da Vinci Cut Certificate: no. LDV862154 (laser inscribed)

Leonardo Da Vinci Cut Certificate: no. LDV861154 (laser inscribed)

£30,000-40,000

US\$40,000-52,000

€35,000-46,000



221

221

**EARLY 19TH CENTURY PINK TOPAZ AND DIAMOND PENDANT/
BROOCH**

Oval-cut pink topaz, old, single and rose-cut diamonds, silver and gold, circa 1880, 3.1 cm

£6,000-8,000

US\$7,900-10,000
€7,000-9,300



222

222

COLOURED SAPPHIRE AND DIAMOND BROOCH

Cushion-cut coloured sapphire of 7.52 carats, old-cut diamonds, silver and gold, diamond setting circa 1880, 3.8 cm

£6,000-8,000

US\$7,900-10,000
€7,000-9,300



223



223

**19TH CENTURY AMETHYST AND DIAMOND BROOCH AND
GOLD, AMETHYST AND DIAMOND RING**

Oval-cut amethyst, old and rose-cut diamonds, silver and gold, cluster surround mid 19th century, amethyst possibly replaced in late 19th century, 4.0 cm; cushion-cut amethyst, circular-cut diamonds, gold (Birmingham hallmarks), 1968, ring size M

£2,500-3,500

US\$3,300-4,500
€2,900-4,000





224



225



226

224

DIAMOND SINGLE-STONE RING

Circular-cut diamond of 4.05 carats, French marks, ring size O

£15,000-20,000

US\$20,000-26,000
€18,000-23,000

225

LATE 18TH / EARLY 19TH CENTURY BODICE ORNAMENT

Rose and old-cut diamonds, silver and gold, closed-back settings, adapted, 14.0 cm, red fitted case

£12,000-15,000

US\$16,000-19,000
€14,000-17,000

226

DIAMOND SINGLE-STONE RING

Circular-cut diamond of 3.60 carats, baguette-cut diamonds, ring size M

£10,000-15,000

US\$13,000-19,000
€12,000-17,000



227



228

227

EARLY 19TH CENTURY DIAMOND NECKLACE

Old-cut diamonds, silver and gold, pendant detachable, circa 1830, necklace 35.4 cm, pendant 6.0 cm, original fitted red morocco leather case

£15,000-20,000

US\$20,000-26,000
€18,000-23,000

228

EARLY 20TH CENTURY DIAMOND EARRINGS

Old-cut diamonds of 4.22 and 3.98 carats, circa 1920, 1.9 cm

£10,000-15,000

US\$14,000-20,000
€12,000-17,000



229



230



231

229

DIAMOND PENDANT

Circular-cut diamond of 9.16 carats, 3.3 cm

£30,000-35,000

US\$39,000-45,000
€35,000-40,000

230

DIAMOND BRACELET

Old and rose-cut diamonds, one diamond deficient, inner circumference 19.0 cm

£3,500-5,500

US\$4,600-7,100
€4,100-6,300

231

ART DÉCO DIAMOND DOUBLE CLIP BROOCH

Circular, single, old and baguette-cut diamonds, with fitting for wear as a single brooch, circa 1935, 4.2 cm

£8,500-10,500

US\$11,000-14,000
€9,900-12,000



(illustrated as necklace)

FORMERLY FROM THE COLLECTION OF
THE VISCOUNTESS HARCOURT

232

LATE 19TH CENTURY DIAMOND TIARA/NECKLACE

Old and rose-cut diamonds, platinum and gold, with backchain for wear as necklace, adapted, circa 1890, inner circumference 41.5 cm

£30,000-40,000

US\$39,000-52,000
€35,000-46,000

PROVENANCE:

Formerly from the collection of the Harcourt family. This tiara was possibly gifted by Lewis 1st Viscount Harcourt to his wife, Mary, whom he married in 1899.



ELIANE FATTAL FOR S.J. PHILLIPS

Eliane Fattal began collaborating with the renowned antique jeweller S.J. Phillips in 2011. Fattal has become well regarded for sympathetically reimagining late 19th and early 20th century jewels into artistic creations for a modern audience.



233



234



234
(alternative view)



235



(side view)

233

DEMANTOID GARNET AND DIAMOND 'LEAFY & FLORAL STEM' EARRINGS, ELIANE FATTAL FOR S.J. PHILLIPS

Calibr -cut demantoid garnets, cushion, old, briolette and rose-cut diamonds, 9.0 and 1.8 cm, signed EF/SJP for Eliane Fattal for S.J. Phillips, numbered 75, red Eliane Fattal for S.J. Phillips presentation case

Eliane Fattal for S.J. Phillips: original authentication document and gouache rendering

 12,000-15,000

US\$16,000-20,000
 14,000-17,000

234

TRANSFORMABLE EMERALD AND DIAMOND 'SINCERITY' EARRINGS, ELIANE FATTAL FOR S.J. PHILLIPS

Cushion-shaped and circular-cut emeralds, old-cut diamonds, three interchangeable post and scroll fittings, two branches deficient, 7.7 and 2.0 cm, signed EF/SJP for Eliane Fattal for S.J. Phillips, numbered 76, blue S.J. Phillips case

Eliane Fattal for S.J. Phillips: original authentication document and gouache rendering

 6,000-8,000

US\$7,900-10,000
 7,000-9,300

235

DEMANTOID GARNET AND DIAMOND 'PANSY' RING, ELIANE FATTAL FOR S.J. PHILLIPS

Circular-cut demantoid garnets, old-cut diamonds, ring size O, signed EF/SJP for Eliane Fattal for S.J. Phillips, numbered 4, red Eliane Fattal for S.J. Phillips presentation case and miniature travel case

 8,000-12,000

US\$11,000-16,000
 9,400-14,000



236

THE PROPERTY OF A LADY OF TITLE

236

GEORGE III DIAMOND EARRINGS

Old-cut diamonds, silver and gold, partially closed-set, adapted, circa 1800, 6.2 cm

£20,000-30,000

US\$27,000-39,000
€24,000-35,000



237



(side view)

THE PROPERTY OF A NOBLE EUROPEAN FAMILY

237

BELLE ÉPOQUE DIAMOND RING

Rose, single and old-cut diamonds, platinum (French marks), circa 1900, ring size L

£8,000-12,000

US\$11,000-16,000
€9,300-14,000



THE PROPERTY OF A LADY OF TITLE

238

A RARE LATE 18TH / EARLY 19TH CENTURY DIAMOND TIARA

Old and rose-cut diamonds, closed-set in silver and gold,
velvet covered tiara frame, circa 1800, 5.0 cm high

£25,000-35,000

US\$33,000-46,000

€30,000-41,000



239



240

THE PROPERTY OF A EUROPEAN NOBLE HOUSE

239

THREE ROW NATURAL PEARL NECKLACE

Three rows of 142, 137 and 134 natural pearls of approximately 7.2-7.3 to 2.3 mm, 44.5 cm

Gem & Pearl Laboratory, 2019, report no. 16731: natural pearls (saltwater)

£2,500-3,500

US\$3,300-4,500
€2,900-4,000

VARIOUS PROPERTIES

~ 240

**CORAL AND DIAMOND 'ROSE DE NOËL' EARRINGS,
VAN CLEEF & ARPELS**

Coral panels, circular-cut diamonds, 3.0 cm,
signed Van Cleef & Arpels, no. BL234508

£12,000-15,000

US\$16,000-20,000
€14,000-17,000

JUNICHI HAKOSE FOR VAN CLEEF & ARPELS

Created in association with renowned Japanese lacquer artist Mr. Junichi Hakose, each butterfly brooch from this collection was uniquely hand decorated in the Japanese tradition and signed by Mr. Hakose to the reverse.



241



242

241 LACQUER AND DIAMOND 'LACQUERED BUTTERFLY' BROOCH AND WOOD AND DIAMOND BROOCH, VAN CLEEF & ARPELS

Black lacquer, snakewood plaques, circular-cut diamonds, French marks, 4.8 cm, both signed VCA for Van Cleef & Arpels, no. CL 13714 and CF 11014 respectively

£20,000-25,000

US\$27,000-33,000
€24,000-29,000

242 DIAMOND 'ALLEGRA' EARRINGS, DE GRISOGONO

Circular-cut diamonds, 2.8 cm, signed de Grisogono, maker's mark, no. B4848

£3,000-4,000

US\$3,900-5,200
€3,500-4,600



243

243
DIAMOND RING

Circular-cut diamond of 7.57 carats, ring size O

£26,000-30,000

US\$34,000-39,000
€31,000-35,000



244

244
DIAMOND EARRINGS, TIFFANY & CO.

Circular and baguette-cut diamonds, French import marks, 3.0 cm, signed Tiffany & Co., black Tiffany & Co. case

£18,000-25,000

US\$24,000-32,000
€21,000-29,000



245



246



247

245

DIAMOND EARRINGS

Cushion brilliant-cut diamonds of 4.02 and 4.01 carats, circular-cut diamonds, 2.4 cm

GIA, 2008, report no. 16746522: 4.02 carats, G colour, SI1 clarity

GIA, 2008, report no. 17209632: 4.01 carats, H colour, SI1 clarity

Please note that these reports are over 5 years old and may require an update

£50,000-80,000

US\$66,000-100,000
€59,000-93,000

246

DIAMOND BRACELET

Circular, baguette and tapered baguette-cut diamonds, 18.0 cm

£8,000-12,000

US\$11,000-15,000
€9,300-14,000

247

DIAMOND RING

Circular-cut diamond, ring size Q

£13,000-18,000

US\$17,000-23,000
€16,000-21,000



† 248

ILLUSION-SET DIAMOND LONGCHAIN NECKLACE

Circular, marquise, square and baguette-cut diamonds, 94.0 cm

£18,000-22,000

US\$24,000-28,000

€21,000-25,000



249

249
MORGANITE AND DIAMOND EARRINGS, MARGHERITA BURGNER

Pear-shaped morganites, circular-cut diamonds, drops detachable, 7.0 cm, signed Margherita Burgener, maker's mark, grey Margherita Burgener case

£10,000-15,000

US\$14,000-20,000
 €12,000-17,000



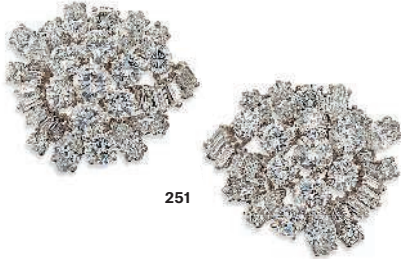
250

250
DIAMOND 'KELLY' BANGLE, HERMÈS

Circular-cut diamonds, French marks, inner circumference 16.0 cm, signed Hermès, no. AI0242 ST

£20,000-25,000

US\$27,000-33,000
 €24,000-29,000



251



252

251
DIAMOND EARRINGS

Marquise, circular and baguette-cut diamonds, French import marks, 2.5 cm

£12,000-15,000

US\$16,000-19,000
€14,000-17,000

252
DIAMOND BRACELET

Circular, marquise-cut and pear-shaped diamonds, 17.5 cm

£20,000-30,000

US\$26,000-39,000
€24,000-35,000



253

**MID-20TH CENTURY SAPPHIRE AND DIAMOND BROOCH,
MERZAGHI**

Pear shaped sapphires, marquise, baguette and circular-cut diamonds, circa 1960, 5.8 cm

£8,000-12,000

US\$11,000-16,000
€9,300-14,000

PROVENANCE:

Formerly the property of Renata Tebaldi (1922-2004)

EXHIBITED:

Exhibited in the Basilica Palladiana between 2014-2016 in Vicenza's Museo del Gioiello, the only museum dedicated to jewellery in Italy.

LITERATURE:

Cf. S. Papi and A. Rhodes, *Famous Jewellery Collectors*, Thames & Hudson, London, 1999, p.61, for a photograph of Renata Tebaldi wearing this brooch

Renata Tebaldi (1922-2004), famed for her 'voice of an angel' was a world renowned operatic star of the 20th century. Gracing stages across Italy, and most notably at La Scala under the conductorship of the great Arturo Toscanini, Tebaldi gathered an international following during the 1950s, eventually inducing her to accept a contract at the Metropolitan opera house in New York. As Tebaldi's fame continued to grow so did the media fascination in the rivalry between her and the other great diva of the age Maria Callas; each soprano having an ardent following of loyal supporters known in turn as the Tebaldists and Callasites. By the time she retired in 1976 Tebaldi was acknowledged to be as one of the world's finest prima donnas.

Tebaldi passionately loved jewellery and spent many years enthusiastically altering and adding to her collection. The sapphire and diamond brooch offered here was commissioned by Tebaldi from the Milanese jeweller Merzaghi to complement a favourite pair of similarly-set Van Cleef & Arpels flowerhead earrings. Tebaldi wore both the earrings and this brooch for the publicity photographs taken to accompany the release of her record 'Tebaldi and Corelli Great Opera Duets' in 1972.



Renata Tebaldi wearing the present lot, 1972.



254

254

EMERALD AND DIAMOND RING

Rectangular-cut emerald of 14.39 carats, baguette-cut diamonds, ring size L

Gem & Pearl Laboratory: 2019, no. 17066: 14.39 carats, Colombia, minor clarity enhancement

£40,000-60,000

US\$52,000-77,000

€47,000-69,000



255

255

ART DÉCO DIAMOND BRACELET

Circular-cut diamonds, French marks, circa 1935, 19.0 cm

£7,000-9,000

US\$9,200-12,000

€8,200-10,000

256

THE PROPERTY OF A LADY

256

ART DÉCO DIAMOND BRACELET

Old, single, circular, square and baguette-cut diamonds, French marks, circa 1930, 17.6 cm, no. 666

£18,000-25,000

US\$24,000-33,000

€21,000-29,000





257

THE PROPERTY OF A NOBLE LADY

257

ELEGANT ART DÉCO DIAMOND EARRINGS

Triangular and baguette-cut diamonds, French marks, circa 1920, 7.8 cm

£50,000-70,000

US\$66,000-91,000
€59,000-81,000



258

VARIOUS PROPERTIES

258

DIAMOND RING, CHAUMET

Old cushion-cut diamond of 13.80 carats, French marks, ring size N, integrated sprung sizing hoop, signed Chaumet Paris, maker's mark

£60,000-80,000

US\$78,000-100,000
€70,000-92,000



259

THE PROPERTY OF A LADY

259

EARLY 20TH CENTURY DIAMOND AND EMERALD BUTTERFLY BROOCH

Old, rose and single-cut diamonds, circular cabochon emeralds, mounted *en tremblant*, circa 1910, 5.6 cm, navy fitted case

£4,000-6,000

US\$5,200-7,700
€4,700-6,900





261



260

VARIOUS PROPERTIES

260

DIAMOND EARRINGS, CHAUMET

Old cushion-cut diamonds of 2.85 and 2.61 carats, old-cut diamonds, French marks, 1.8 cm, signed Chaumet Paris, maker's marks

£20,000-25,000

US\$26,000-32,000
€24,000-29,000

THE PROPERTY OF A LADY

261

LATE 19TH CENTURY NATURAL PEARL, EMERALD AND DIAMOND NECKLACE

Three rows of 110, 106 and 101 natural pearls measuring approximately 5.6-3.8 mm, octagonal step-cut emerald of 5.65 carats, old-cut diamonds, gold, additional interchangeable diamond-set bow pendant fitting and brooch fitting, circa 1890, 38.0 cm

Gem & Pearl Laboratory, 2019, report no. 17069: Natural pearls (saltwater)

Gem & Pearl Laboratory, 2019, report no. 16734: Colombia, minor evidence of clarity enhancement

£15,000-20,000

US\$20,000-26,000
€18,000-23,000



(illustrated as a pendant)



262

VARIOUS PROPERTIES

262

EMERALD AND DIAMOND RING

Octagonal step-cut emerald, triangular-cut diamonds, ring size K
AGL, 2019, report no. 1097930: Colombia, minor traditional clarity
enhancement

£20,000-30,000

US\$26,000-39,000
€24,000-35,000



263

263

**ART DÉCO RUBY, SAPPHIRE, EMERALD AND DIAMOND
BRACELET**

Carved rubies, sapphires and emeralds, single-cut diamonds,
circa 1925, 18.0 cm, in original pink fitted W.M. Ogden case

£35,000-45,000

US\$46,000-58,000
€41,000-52,000



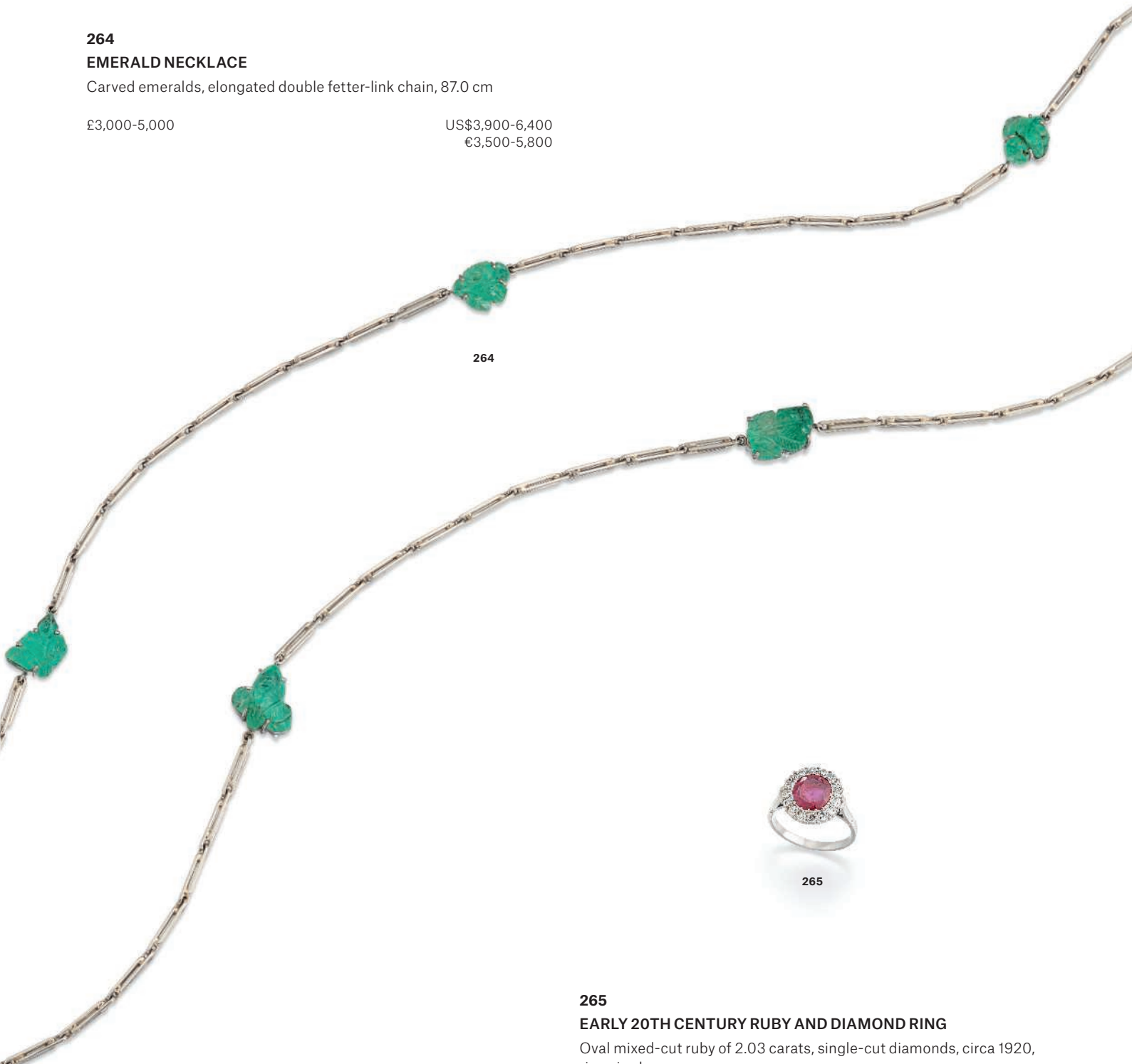
264

EMERALD NECKLACE

Carved emeralds, elongated double fetter-link chain, 87.0 cm

£3,000-5,000

US\$3,900-6,400
€3,500-5,800



265

265

EARLY 20TH CENTURY RUBY AND DIAMOND RING

Oval mixed-cut ruby of 2.03 carats, single-cut diamonds, circa 1920, ring size I

AGL, 2015, report no. CS 69606: 2.03 carats, Burma, no indications of heating

£7,000-9,000

US\$9,100-12,000
€8,100-10,000



THE PROPERTY OF A PRIVATE COLLECTOR

266

PLATINUM AND DIAMOND EARRINGS, GARRARD & CO.

Round brilliant-cut diamonds of 4.02 and 4.01 carats, platinum (London hallmarks), 1989, 1.0 cm, maker's mark G & Co.

GIA, 2019, report no. 5201051651: 4.02 carats, G colour, VS2 clarity

GIA, 2019, report no. 6204051655: 4.01 carats, G colour, VS1 clarity

£60,000-80,000

US\$79,000-100,000

€70,000-93,000



266



267

VARIOUS PROPERTIES

267

DIAMOND BRACELET, HARRY WINSTON

Rectangular-cut diamonds, French import marks, 7.5 cm, maker's mark HW for Harry Winston, no. 858 B

£25,000-30,000

US\$33,000-39,000

€29,000-35,000

268

PAIR OF FINE EMERALD AND DIAMOND EARRINGS

Pear-shaped emeralds of 4.03 and 3.95 carats (drilled), circular-cut diamonds, 4.2 cm

Gem & Pearl Laboratory, 2019, report no. 17151: Colombia, evidence of minor clarity enhancement

£40,000-60,000

US\$52,000-77,000

€47,000-69,000



268

269

EARLY 20TH CENTURY COLOURED DIAMOND AND DIAMOND RING

Fancy Intense Yellow round brilliant-cut diamond of 1.41 carats, old and single-cut diamonds, circa 1910, ring size M

GIA, 2016, report no. 2173978747: 1.41 carats, Fancy Intense Yellow colour, SI2 clarity

£10,000-15,000

US\$13,000-19,000

€12,000-17,000



269



270

IMPRESSIVE DIAMOND NECKLACE

Old, circular and baguette-cut diamonds, 39 cm

£180,000-250,000

US\$240,000-320,000

€210,000-290,000





Ω271

WHITE GOLD AND SAPPHIRE RING, GARRARD & CO.

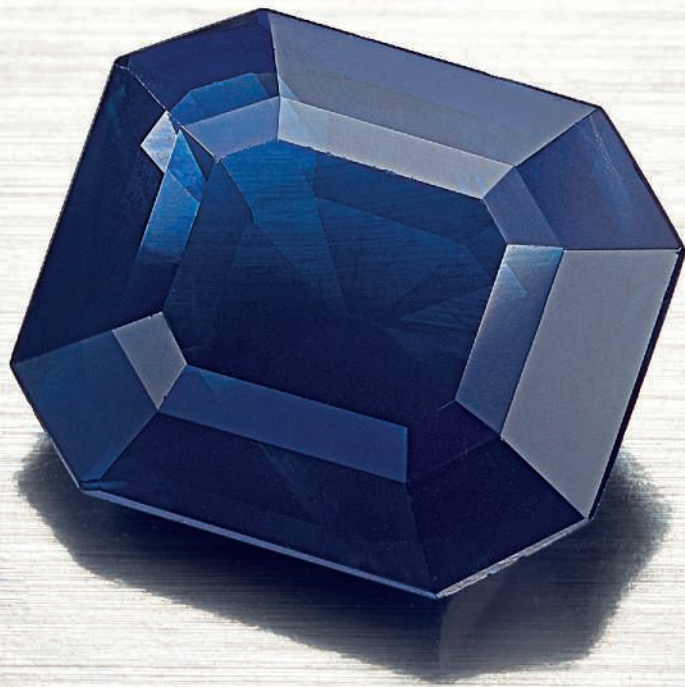
Octagonal step-cut sapphire of 9.17 carats, gold (London hallmarks), 1993, ring size X, maker's mark for Garrard & Co.

SSEF, 2018, report no. 99273: 9.17 carats, Kashmir, no indications of heating

Gübelin, 2018, report no. 18070044: 9.17 carats, Kashmir, no indications of heating

£180,000-220,000

US\$240,000-290,000
€210,000-260,000





272

SAPPHIRE AND DIAMOND EARRINGS, GRAFF

Circular-cut sapphires and diamonds, 5.4 cm, signed Graff, no. 12277, blue Graff pouch

£6,000-8,000

US\$7,800-10,000
€7,000-9,200



272

THE PROPERTY OF A PRIVATE COLLECTOR

273

AN IMPORTANT DIAMOND RING

Circular-cut diamond of 10.05 carats, ring size K
GIA, 2019, report no. 5295537: 10.05 carats, E colour, VVS1 clarity,
Type IIa

£350,000-450,000

US\$460,000-580,000
€410,000-520,000



273

THE PROPERTY OF A LADY

274

DIAMOND RING

Rectangular-cut diamond of 11.29 carats, baguette-cut diamonds,
ring size K with integrated sizing hoop
GIA, 2019, report no. 5201050595: 11.29 carats, G colour, VS2 clarity

£160,000-180,000

US\$210,000-230,000
€190,000-210,000



274



275

275
DIAMOND PENDANT NECKLACE

Old and single-cut diamonds, one small diamond deficient, pendant detachable, first half of the 20th century, necklace 36.1 cm, pendant/brooch 5.6 cm

£15,000-22,000

US\$20,000-28,000
€18,000-25,000



276

THE PROPERTY OF A LADY

276
A FINE LATE 19TH CENTURY SAPPHIRE AND DIAMOND BROOCH

Antique cushion-cut sapphire of 26.49 carats, old-cut diamonds, silver and gold, circa 1880, 3.4 cm

SSEF, 2019, report no. 105036: 26.49 carats, Ceylon, no indications of heating

£90,000-120,000

US\$120,000-150,000
€110,000-140,000



INDEX

A

Asprey, 80, 97

B

Boucheron, 111, 113

Breguet, 82

Brogden, John, 41

Buccellati, 166, 169, 170, 176-178

Bulgari, 2, 3, 4, 5, 70, 72, 116, 117

Burgener, M., 84, 202, 249

C

Cartier, 123-165

Chanel, 8-18

Chaumet, 122, 258, 260

D

De Grisogono, 1, 7, 242

E

Eliane Fattal, 233-235

F

Frascarolo, 19

G

Garrard & Co., 266, 271

Gerard, 119

Giuliano, Carlo, 39

Graff, 207, 272

H

Hamilton & Inches, 187

Harry Winston, 267

Hèrmes, 121, 250

J

Janesich, 86

L

Lacloche Frères, 88, 209

Lalaounis, 74, 120

M

Marchak, 186

Mellerio dits Meller, 68

Merzaghi, 253

P

Patek Philippe, 20

S

Sauer, Amsterdam, 6

Seaman Schepps, 189

T

Tiffany & Co., 94, 184, 212, 244

V

Van Cleef & Arpels, 21, 23, 47, 76, 112,

114, 115, 168, 191-194, 200, 201, 203,

240, 241

Verdura, 71

W

Webb, D., 172



CONVERSION CHART

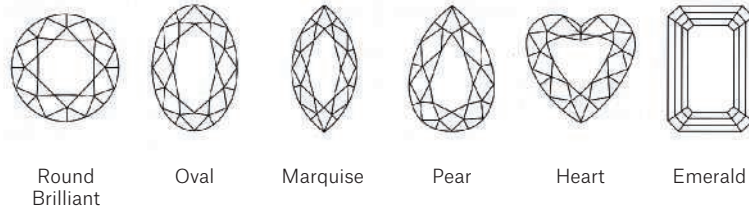
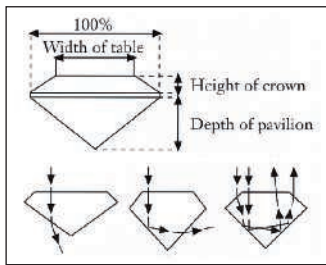
Ring Size

Measurements

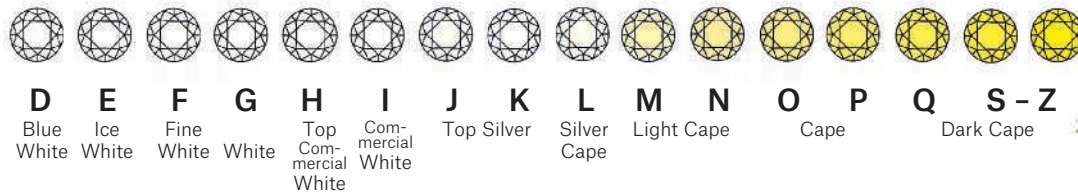
AMERICAN	FRENCH/ JAPANESE	ENGLISH	METRIC	INCHES	CM
1/2	—	A	37.8252		
3/4	—	A 1/2	38.4237		
1	—	B	39.0222		1
1 1/4	—	B 1/2	39.6207		
1 1/2	—	C	40.2192		2
1 3/4	—	C 1/2	40.8177		
2	—	D	41.4162	1	
2 1/4	1	D 1/2	42.0147		3
2 1/2	2	E	42.6132		
2 3/4	—	E 1/2	43.2117		4
3	3	F	43.8102		
3 1/4	4	F 1/2	44.4087		5
3 1/4	—	G	45.0072	2	
3 1/2	5	G 1/2	45.6057		6
3 3/4	—	H	46.2042		
4	6	H 1/2	46.8027		7
4 1/4	—	I	47.4012		
4 1/2	7	I 1/2	47.9997		8
4 3/4	8	J	48.5982		
5	—	J 1/2	49.1967	3	
5 1/4	9	K	49.7952		9
5 1/2	10	K 1/2	50.3937		
5 3/4	—	L	50.9922		10
6	11	L 1/2	51.5907		
6 1/4	—	M	52.1892		11
6 1/2	12	M 1/2	52.7877	4	
6 3/4	13	N	53.4660		12
7	—	N 1/2	54.1044		
7	14	O	54.7428		13
7 1/4	15	O 1/2	55.3812		
7 1/2	—	P	56.0196		14
7 3/4	16	P 1/2	56.6580		
8	—	Q	57.2964	5	
8 1/4	17	Q 1/2	57.9348		15
8 1/2	18	R	58.5732		
8 3/4	—	R 1/2	59.2116		16
9	19	S	59.8500		
9 1/4	20	S 1/2	60.4884		17
9 1/2	—	T	61.1268	6	
9 3/4	21	T 1/2	61.7652		18
10	22	U	62.4026		
10 1/4	—	U 1/2	63.0420		19
10 1/2	23	V	63.6804		
10 3/4	24	V 1/2	64.3188		20
11	—	W	64.8774		
11 1/4	25	W 1/2	65.4759	7	
11 1/2	—	X	66.0744		21
11 3/4	26	X 1/2	66.6729		
12	—	Y	67.2714		22
12 1/4	—	Y 1/2	67.8699		
12 1/2	—	Z	68.4684		23
	—				

DIAMONDS • THE 4 C'S

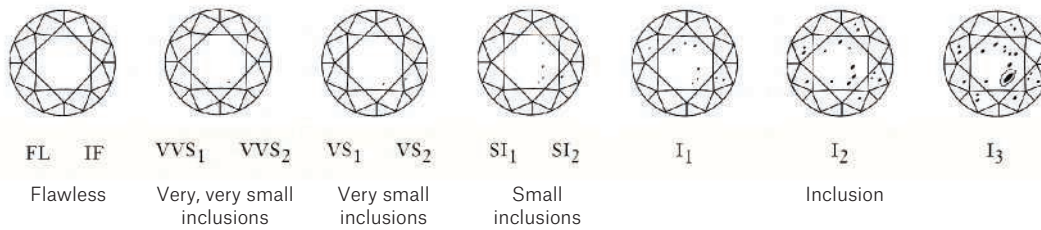
Cut



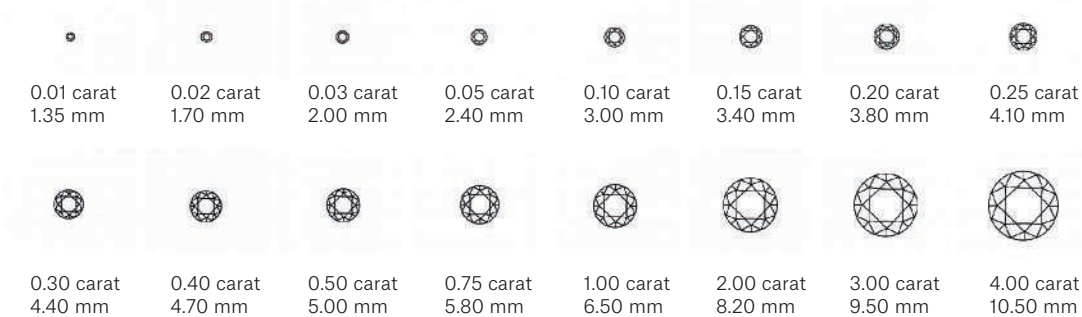
Colour (G.I.A.)



Clarity (G.I.A.)



Carat



Courtesy of Jewellers Network, the Southern African Jewellery Trade Directory, from information supplied by De Beers.
www.jewellersnetwork.co.za

COLOURLESS DIAMOND INDEX

LOT	COLOUR	CLARITY	WEIGHT	CUT
220	D	VVS1	1.54	Leonardo Da Vinci
220	D	VVS1	1.54	Leonardo Da Vinci
100	D	VVS1	0.40	Pear
100	D	VVS1	0.40	Pear
100	D	VVS1	0.34	Pear
100	D	VVS1	0.30	Pear
100	D	VVS2	0.35	Pear
100	D	VVS2	0.32	Pear
100	D	VS1	0.31	Pear
100	D	VS2	0.33	Pear
100	D	VS2	0.31	Pear
273	E	VVS1	10.05	Round
100	E	VVS1	0.31	Pear
218	F	VVS2	7.56	Rectangular
266	G	VS1	4.01	Round
274	G	VS2	11.29	Rectangular
266	G	VS2	4.02	Round
245	G	SI1	4.02	Cushion
245	H	SI1	4.01	Cushion

COLOURED DIAMOND INDEX

LOT	COLOUR	CLARITY	WEIGHT	CUT
107	Fancy Green	I1	1.01	Pear
109	Fancy Blue-Green	VS2	0.67	Cushion
108	Fancy Light Pink		0.77	Modified Shield
269	Fancy Intense Yellow	SI2	1.41	Round
216	Fancy Yellow	IF	4.05	Cushion
183	Fancy Yellow	VVS1	4.01	Cushion
183	Fancy Yellow	VS2	4.03	Cushion
205	Fancy Light Yellow	VVS1	4.55	Cushion
110	Fancy Vivid Orangy Yellow	VS2	2.00	Pear
118	Fancy Light Yellowish Brown	VS1	10.71	Round

COLOURED STONE INDEX

RUBY

LOT	WEIGHT	ORIGIN	TREATMENT	CUT
188	56.55	Burma	No Heat	Cushion & Oval
65	2.67	Burma	No Heat	Oval
265	2.03	Burma	No Heat	Oval
60		Burma	No Heat	Oval

SAPPHIRE

LOT	WEIGHT	ORIGIN	TREATMENT	CUT
271	9.17	Kashmir	No Heat	Octagonal
81	75.44	Ceylon	No Heat/Yellow	Oval
276	26.49	Ceylon	No Heat	Cushion
199	19.39	Ceylon	No Heat	Cushion
51	18.58	Ceylon	No Heat	Oval
173	9.35	Ceylon	No Heat/Pink	Oval
213	5.16	Ceylon	No Heat	Cushion
215		Ceylon	No Heat	Oval
79	6.00	Madagascar	No Heat/Colour Change	Cushion

EMERALD

LOT	WEIGHT	ORIGIN	TREATMENT	CUT
106	2.46	Colombia	None	Rectangular
254	14.39	Colombia	Minor	Rectangular
261	5.65	Colombia	Minor	Octagonal
268	4.03	Colombia	Minor	Pear
268	3.95	Colombia	Minor	Pear
262		Colombia	Minor	Octagonal
160a	4.65	Afghanistan	Minor	Rectangular

MAHARAJAS
& MUGHAL
MAGNIFICENCE



AUCTION

New York • 19 June

VIEWING

14–18 June

20 Rockefeller Plaza • New York, NY 10020

CONTACT

Rahul Kadakia

rkadakia@christies.com • +1 212 636 2300

William Robinson

wrobinson@christies.com • +44 (0) 20 7389 2370

THE NIZAM OF HYDERABAD NECKLACE c. 1850

CHRISTIE'S

CONDITIONS OF SALE • BUYING AT CHRISTIE'S

CONDITIONS OF SALE

These Conditions of Sale and the Important Notices and Explanation of Cataloguing Practice set out the terms on which we offer the **lots** listed in this catalogue for sale. By registering to bid and/or by bidding at auction you agree to these terms, so you should read them carefully before doing so. You will find a glossary at the end explaining the meaning of the words and expressions coloured in **bold**.

Unless we own a **lot** (Δ symbol), Christie's acts as agent for the seller.

A BEFORE THE SALE

1 DESCRIPTION OF LOTS

(a) Certain words used in the catalogue description have special meanings. You can find details of these on the page headed 'Important Notices and Explanation of Cataloguing Practice' which forms part of these terms. You can find a key to the Symbols found next to certain catalogue entries under the section of the catalogue called 'Symbols Used in this Catalogue'.

(b) Our description of any **lot** in the catalogue, any **condition** report and any other statement made by us (whether orally or in writing) about any lot, including about its nature or **condition**, artist, period, materials, approximate dimensions or **provenance** are our opinion and not to be relied upon as a statement of fact. We do not carry out in-depth research of the sort carried out by professional historians and scholars. All dimensions and weights are approximate only.

2 OUR RESPONSIBILITY FOR OUR DESCRIPTION OF LOTS

We do not provide any guarantee in relation to the nature of a **lot** apart from our **authenticity warranty** contained in paragraph E2 and to the extent provided in paragraph I below.

3 CONDITION

(a) The **condition** of **lots** sold in our auctions can vary widely due to factors such as age, previous damage, restoration, repair and wear and tear. Their nature means that they will rarely be in perfect **condition**. **Lots** are sold 'as is', in the **condition** they are in at the time of the sale, without any representation or warranty or assumption of liability of any kind as to condition by Christie's or by the seller.

(b) Any reference to **condition** in a catalogue entry or in a **condition** report will not amount to a full description of **condition**, and images may not show a **lot** clearly. Colours and shades may look different in print or on screen to how they look on physical inspection. **Condition** reports may be available to help you evaluate the **condition** of a **lot**. **Condition** reports are provided free of charge as a convenience to our buyers and are for guidance only. They offer our opinion but they may not refer to all faults, inherent defects, restoration, alteration or adaptation because our staff are not professional restorers or conservators. For that reason they are not an alternative to examining a **lot** in person or taking your own professional advice. It is your responsibility to ensure that you have requested, received and considered any **condition** report.

4 VIEWING LOTS PRE-AUCTION

(a) If you are planning to bid on a **lot**, you should inspect it personally or through a knowledgeable representative before you make a bid to make sure that you accept the description and its **condition**. We recommend you get your own advice from a restorer or other professional adviser.

(b) Pre-auction viewings are open to the public free of charge. Our specialists may be available to answer questions at pre-auction viewings or by appointment.

5 ESTIMATES

Estimates are based on the **condition**, rarity, quality and **provenance** of the **lots** and on prices recently paid at auction for similar property. **Estimates** can change. Neither you, nor anyone else, may rely on any **estimates** as a prediction or guarantee of the actual selling price of a **lot** or its value for any other purpose. **Estimates** do not include the **buyer's premium** or any applicable taxes.

6 WITHDRAWAL

Christie's may, at its option, withdraw any **lot** at any time prior to or during the sale of the **lot**. Christie's has no liability to you for any decision to withdraw.

7 JEWELLERY

(a) Coloured gemstones (such as rubies, sapphires and emeralds) may have been treated to improve their look, through methods such as heating and oiling. These methods are accepted by the international jewellery trade but may make the gemstone less strong and/or require special care over time.

(b) All types of gemstones may have been improved by some method. You may request a gemmological report for any item which does not have a report if the request is made to us at least three weeks before the date of the auction and you pay the fee for the report.

(c) We do not obtain a gemmological report for every gemstone sold in our auctions. Where we do get gemmological reports from internationally accepted gemmological laboratories, such reports will be described in the catalogue. Reports from American gemmological laboratories will describe any improvement or treatment to the gemstone. Reports from European gemmological laboratories will describe any improvement or treatment only if we request that they do so, but will confirm when no improvement or treatment has been made. Because of differences in approach and technology, laboratories may not agree whether a particular gemstone has been treated, the amount of treatment or whether treatment is permanent. The gemmological laboratories will only report on the improvements or treatments known to the laboratories at the date of the report.

(d) For jewellery sales, **estimates** are based on the information in any gemmological report or, if no report is available, assume that the gemstones may have been treated or enhanced.

8 WATCHES & CLOCKS

(a) Almost all clocks and watches are repaired in their lifetime and may include parts which are not original. We do not give a **warranty** that any individual component part of any watch or clock is **authentic**. Watchbands described as 'associated' are not part of the original watch and may not be **authentic**. Clocks may be sold without pendulums, weights or keys.

(b) As collectors' watches and clocks often have very fine and complex mechanisms, a general service, change of battery or further repair work may be necessary, for which you are responsible. We do not give a **warranty** that any watch or clock is in good working order. Certificates are not available unless described in the catalogue.

(c) Most watches have been opened to find out the type and quality of movement. For that reason, watches with water resistant cases may not be waterproof and we recommend you have them checked by a competent watchmaker before use.

Important information about the sale, transport and shipping of watches and watchbands can be found in paragraph H2(g).

B REGISTERING TO BID

1 NEW BIDDERS

(a) If this is your first time bidding at Christie's or you are a returning bidder who has not bought anything from any of our salerooms within the last two years you must register at least 48 hours before an auction to give us enough time to process and approve your registration. We may, at our option, decline to permit you to register as a bidder. You will be asked for the following:

(i) for individuals: Photo identification (driving licence, national identity card or passport) and, if not shown on the ID document, proof of your current address (for example, a current utility bill or bank statement).

(ii) for corporate clients: Your Certificate of Incorporation or equivalent document(s) showing your name and registered address together with documentary proof of directors and beneficial owners; and

(iii) for trusts, partnerships, offshore companies and other business structures, please contact us in advance to discuss our requirements. (b) We may also ask you to give us a financial reference and/or a deposit as a condition of allowing you to bid. For help, please contact our Credit Department on +44 (0)20 7839 9060.

2 RETURNING BIDDERS

We may at our option ask you for current identification as described in paragraph B1(a) above, a financial reference or a deposit as a condition of allowing you to bid. If you have not bought anything from any of our salerooms in the last two years or if you want to spend more than on previous occasions, please contact our Credit Department on +44 (0)20 7839 9060.

3 IF YOU FAIL TO PROVIDE THE RIGHT DOCUMENTS

If in our opinion you do not satisfy our bidder identification and registration procedures including, but not limited to completing any anti-money laundering and/or anti-terrorism financing checks we may require to our satisfaction, we may refuse to register you to bid, and if you make a successful bid, we may cancel the contract for sale between you and the seller.

4 BIDDING ON BEHALF OF ANOTHER PERSON

(a) **As authorised bidder.** If you are bidding on behalf of another person, that person will need to complete the registration requirements above before you can bid, and supply a signed letter authorising you to bid for him/her.

(b) **As agent for an undisclosed principal.** If you are bidding as an agent for an undisclosed principal (the ultimate buyer(s)), you accept personal liability to pay the **purchase price** and all other sums due, unless it has been agreed in writing with Christie's before commencement of the auction that the bidder is acting as an agent on behalf of a named third party acceptable to Christie's and that Christie's will only seek payment from the named third party.

5 BIDDING IN PERSON

If you wish to bid in the saleroom you must register for a numbered bidding paddle at least 30 minutes before the auction. You may register online at www.christies.com or in person. For help, please contact the Credit Department on +44 (0)20 7839 9060.

6 BIDDING SERVICES

The bidding services described below are a free service offered as a convenience to our clients and Christie's is not responsible for any error (human or otherwise), omission or breakdown in providing these services.

(a) Phone Bids

Your request for this service must be made no later than 24 hours prior to the auction. We will accept bids by telephone for lots only if our staff are available to take the bids. If you need to bid in a language other than in English, you must arrange this well before the auction. We may record telephone bids. By bidding on the telephone, you are agreeing to us recording your conversations. You also agree that your telephone bids are governed by these Conditions of Sale.

(b) Internet Bids on Christie's Live™

For certain auctions we will accept bids over the Internet. For more information, please visit <https://www.christies.com/buying-services/buying-guide/register-and-bid/>. As well as these Conditions of Sale, internet bids are governed by the Christie's LIVE™ Terms of Use which are available on <https://www.christies.com/LiveBidding/OnlineTermsOfUse>.

(c) Written Bids

You can find a Written Bid Form at the back of our catalogues, at any Christie's office or by choosing the sale and viewing the **lots** online at www.christies.com. We must receive your completed Written Bid Form at least 24 hours before the auction. Bids must be placed in the currency of the saleroom. The auctioneer will take reasonable steps to carry out written bids at the lowest possible price, taking into account the **reserve**. If you make a written bid on a **lot** which does not have a **reserve** and there is no higher bid than yours, we will bid on your behalf at around 50% of the **low estimate** or, if lower, the amount of your bid. If we receive written bids on a **lot** for identical amounts, and at the auction these are the highest bids on the **lot**, we will sell the **lot** to the bidder whose written bid we received first.

C CONDUCTING THE SALE

1 WHO CAN ENTER THE AUCTION

We may, at our option, refuse admission to our premises or decline to permit participation in any auction or to reject any bid.

2 RESERVES

Unless otherwise indicated, all lots are subject to a **reserve**. We identify **lots** that are offered without **reserve** with the symbol Δ next to the **lot** number. The reserve cannot be more than the **lot's low estimate**.

3 AUCTIONEER'S DISCRETION

The auctioneer can at his sole option:

- refuse any bid;
- move the bidding backwards or forwards in any way he or she may decide, or change the order of the **lots**;
- withdraw any **lot**;
- divide any **lot** or combine any two or more **lots**;
- reopen or continue the bidding even after the hammer has fallen; and

(f) in the case of error or dispute related to bidding and whether during or after the auction, to continue the bidding, determine the successful bidder, cancel the sale of the **lot**, or reoffer and resell any **lot**. If you believe that the auctioneer has accepted the successful bid in error, you must provide a written notice detailing your claim within 3 business days of the date of the auction. The auctioneer will consider such claim in good faith. If the auctioneer, in the exercise of his or her discretion under this paragraph, decides after the auction is complete, to cancel the sale of a **lot**, or reoffer and resell a **lot**, he or she will notify the successful bidder no later than by the end of the 7th calendar day following the date of the auction. The auctioneer's decision in exercise of this discretion is final. This paragraph does not in any way prejudice Christie's ability to cancel the sale of a **lot** under any other applicable provision of these Conditions of Sale, including the rights of cancellation set forth in section B(3), E(2)(i), F(4) and J(1).

4 BIDDING

The auctioneer accepts bids from:

- bidders in the saleroom;
- telephone bidders, and internet bidders through 'Christie's LIVE™' (as shown above in Section B6); and
- written bids (also known as absentee bids or commission bids) left with us by a bidder before the auction.

5 BIDDING ON BEHALF OF THE SELLER

The auctioneer may, at his or her sole option, bid on behalf of the seller up to but not including the amount of the **reserve** either by making consecutive bids or by making bids in response to other bidders. The auctioneer will not identify these as bids made on behalf of the seller and will not make any bid on behalf of the seller at or above the **reserve**. If **lots** are offered without **reserve**, the auctioneer will generally decide to open the bidding at 50% of the **low estimate** for the **lot**. If no bid is made at that level, the auctioneer may decide to go backwards at his or her sole option until a bid is made, and then continue up from that amount. In the event that there are no bids on a **lot**, the auctioneer may deem such **lot** unsold.

6 BID INCREMENTS

Bidding generally starts below the **low estimate** and increases in steps (bid increments). The auctioneer will decide at his or her sole option where the bidding should start and the bid increments. The usual bid increments are shown for guidance only on the Written Bid Form at the back of this catalogue.

7 CURRENCY CONVERTER

The saleroom video screens (and Christie's LIVE™) may show bids in some other major currencies as well as sterling. Any conversion is for guidance only and we cannot be bound by any rate of exchange used. Christie's is not responsible for any error (human or otherwise), omission or breakdown in providing these services.

8 SUCCESSFUL BIDS

Unless the auctioneer decides to use his or her discretion as set out in paragraph C3 above, when the auctioneer's hammer strikes, we have accepted the last bid. This means a contract for sale has been formed between the seller and the successful bidder. We will issue an invoice only to the registered bidder who made the successful bid. While we send out invoices by post and/or email after the auction, we do not accept responsibility for telling you whether or not your bid was successful. If you have bid by written bid, you should contact us by telephone or in person as soon as possible after the auction to get details of the outcome of your bid to avoid having to pay unnecessary storage charges.

9 LOCAL BIDDING LAWS

You agree that when bidding in any of our sales that you will strictly comply with all local laws and regulations in force at the time of the sale for the relevant sale site.

D THE BUYER'S PREMIUM, TAXES AND ARTIST'S RESALE ROYALTY

1 THE BUYER'S PREMIUM

In addition to the **hammer price**, the successful bidder agrees to pay us a **buyer's premium** on the **hammer price** of each **lot** sold. On all **lots** we charge 25% of the **hammer price** up to and including £225,000, 20% on that part of the **hammer price** over £225,000 and up to and including £3,000,000, and 13.5% of that part of the **hammer price** above £3,000,000. VAT will be added to the **buyer's premium** and is payable by you. The VAT may not be shown separately on our invoice because of tax laws. You may be eligible to have a VAT refund in certain circumstances if the **lot** is exported. Please see the "VAT refunds: what can I reclaim?" section of 'VAT Symbols and Explanation' for further information.

2 TAXES

The successful bidder is responsible for all applicable tax including any VAT, sales or compensating use tax or equivalent tax wherever such taxes may arise on the **hammer price** and the **buyer's premium**. VAT charges and refunds depend on the particular circumstances of the buyer. It is the buyer's responsibility to ascertain and pay all taxes due. VAT is payable on the **buyer's premium** and, for some lots, VAT is payable on the **hammer price**. EU and UK VAT rules will apply on the date of the sale.

Brexit: If the UK withdraws from the EU without an agreed transition deal relating to the import or export of **property**, then UK VAT rules only will apply. If you purchased **lot** has not been shipped before the UK withdraws from the EU, your invoiced VAT position may retrospectively change and additional import tariffs may be due on your purchase if imported into the EU. Further information can be found in the **VAT Symbols and Explanation** section of our catalogue. For **lots** Christie's ships to the United States, sales or use tax may be due on the **hammer price**, **buyer's premium** and/or any other charges related to the **lot**, regardless of the nationality or citizenship of the purchaser. Christie's will collect sales tax where legally required. The applicable sales tax rate will be determined based upon the state, county, or locale to which the **lot** will be shipped. Successful bidders claiming an exemption from sales tax must provide appropriate documentation to Christie's prior to the release of the **lot**. For shipments to those states for which Christie's is not required to collect sales tax, a successful bidder may be required to remit use tax to that state's taxing authorities. Christie's recommends you obtain your own independent tax advice with further questions.

3 ARTIST'S RESALE ROYALTY

In certain countries, local laws entitle the artist or the artist's estate to a royalty known as 'artist's resale right' when any **lot** created by the artist is sold. We identify these **lots** with the symbol λ next to the **lot** number. If these laws apply to a **lot**, you must pay us an extra amount equal to the royalty. We will pay the royalty to the appropriate authority on the seller's behalf.

The artist's resale royalty applies if the **hammer price** of the **lot** is 1,000 euro or more. The total royalty for any **lot** cannot be more than 12,500 euro. We work out the amount owed as follows:

Royalty for the portion of the hammer price

(in euros)

4% up to 50,000

3% between 50,000.01 and 200,000

1% between 200,000.01 and 350,000

0.50% between 350,000.01 and 500,000

over 500,000, the lower of 0.25% and 12,500 euro.

We will work out the artist's resale royalty using the euro to sterling rate of exchange of the European Central Bank on the day of the auction.

E WARRANTIES

1 SELLER'S WARRANTIES

For each **lot**, the seller gives a **warranty** that the seller:

(a) is the owner of the **lot** or a joint owner of the **lot** acting with the permission of the other co-owners or, if the seller is not the owner or a joint owner of the **lot**, has the permission of the owner to sell the **lot**, or the right to do so in law; and

(b) has the right to transfer ownership of the **lot** to the buyer without any restrictions or claims by anyone else.

If either of the above **warranties** are incorrect, the seller shall not have to pay more than the **purchase price** (as defined in paragraph F1(a) below) paid by you to us. The seller will not be responsible to you for any reason for loss of profits or business, expected savings, loss of opportunity or interest, costs, damages, **other damages** or expenses. The seller gives no **warranty** in relation to any **lot** other than as set out above and, as far as the seller is allowed by law, all **warranties** from the seller to you, and all other obligations upon the seller which may be added to this agreement by law, are excluded.

2 OUR AUTHENTICITY WARRANTY

We warrant, subject to the terms below, that the **lots** in our sales are authentic (our **authenticity warranty**). If, within five years of the date of the auction, you give notice to us that your **lot** is not **authentic**, subject to the terms below, we will refund the **purchase price** paid by you. The meaning of **authentic** can be found in the glossary at the end of these Conditions of Sale. The terms of the **authenticity warranty** are as follows:

(a) It will be honoured for claims notified within a period of five years from the date of the auction. After such time, we will not be obligated to honour the **authenticity warranty**.

(b) It is given only for information shown in **UPPERCASE type** in the first line of the **catalogue description** (the **Heading**). It does not apply to any information other than in the **Heading** even if shown in **UPPERCASE type**.

(c) The **authenticity warranty** does not apply to any **Heading** or part of a **Heading** which is **qualified**. **Qualified** means limited by a clarification in a **lot's catalogue description** or by the use in a **Heading** of one of the terms listed in the section titled **Qualified Headings** on the page of the catalogue headed 'Important Notices and Explanation of Cataloguing Practice'. For example, use of the term 'ATTRIBUTED TO...' in a **Heading** means that the **lot** is in Christie's opinion probably a work by the named artist but no **warranty** is provided that the **lot** is the work of the named artist. Please read the full list of **Qualified Headings** and a **lot's full catalogue description** before bidding.

(d) The **authenticity warranty** applies to the **Heading** as amended by any **Saleroom Notice**.

(e) The **authenticity warranty** does not apply where scholarship has developed since the auction leading to a change in generally accepted opinion. Further, it does not apply if the **Heading** either matched the generally accepted opinion of experts at the date of the sale or drew attention to any conflict of opinion.

(f) The **authenticity warranty** does not apply if the **lot** can only be shown not to be **authentic** by a scientific process which, on the date we published the catalogue, was not available or generally accepted for use, or which was unreasonably expensive or impractical, or which was likely to have damaged the **lot**.

(g) The benefit of the **authenticity warranty** is only available to the original buyer shown on the invoice for the **lot** issued at the time of the sale and only if, on the date of the notice of claim, the original buyer is the full owner of the **lot** and the **lot** is free from any claim, interest or restriction by anyone else. The benefit of this **authenticity warranty** may not be transferred to anyone else.

(h) In order to claim under the **authenticity warranty**, you must:

(i) give us written notice of your claim within five years of the date of the auction. We may require full details and supporting evidence of any such claim;

(ii) at Christie's option, we may require you to provide the written opinions of two recognised experts in the field of the **lot** mutually agreed by you and us in advance confirming that the **lot** is not **authentic**. If we have any doubts, we reserve the right to obtain additional opinions at our expense; and

(iii) return the **lot** at your expense to the saleroom from which you bought it in the **condition** it was in at the time of sale.

(i) Your only right under this **authenticity warranty** is to cancel the sale and receive a refund of the **purchase price** paid by you to us. We will not, in any circumstances, be required to pay you more than the **purchase price** nor will we be liable for any loss of profits or business, loss of opportunity or value, expected savings or interest, costs, damages, **other damages** or expenses.

(j) **Books**. Where the **lot** is a book, we give an additional **warranty** for 14 days from the date of the sale that if on collation any **lot** is defective in text or illustration, we will refund your **purchase price**, subject to the following terms:

(a) This additional **warranty** does not apply to:

(i) the absence of blanks, half titles, tissue guards or advertisements, damage in respect of bindings, stains, spotting, marginal tears or other defects not affecting completeness of the text or illustration;

(ii) drawings, autographs, letters or manuscripts, signed photographs, music, atlases, maps or periodicals;

(iii) books not identified by title;

(iv) **lots** sold without a printed estimate;

(v) books which are described in the catalogue as sold not subject to return; or

(vi) defects stated in any **condition** report or announced at the time of sale.

(b) To make a claim under this paragraph you must give written details of the defect and return the **lot** to the sale room at which you bought it in the same **condition** as at the time of sale, within 14 days of the date of the sale.

(k) **South East Asian Modern and Contemporary Art and Chinese Calligraphy and Painting**.

In these categories, the **authenticity warranty** does not apply because current scholarship does not permit the making of definitive statements. Christie's does, however, agree to cancel a sale in either of these two categories of art where it has been proven the **lot** is a forgery. Christie's will refund to the original buyer the purchase price in accordance with the terms of Christie's authenticity warranty, provided that the original buyer notifies us with full supporting evidence documenting the forgery claim within twelve (12) months of the date of the auction. Such evidence must be satisfactory to us that the **lot** is a forgery in accordance with paragraph E2(h)(ii) above and the **lot** must be returned to us in accordance with E2(h)(ii) above. Paragraphs E2(b), (c), (d), (e), (f) and (g) and (i) also apply to a claim under these categories.

3 YOUR WARRANTIES

(a) You **warrant** that the funds used for settlement are not connected with any criminal activity, including tax evasion, and you are neither under investigation, nor have you been charged with or convicted of money laundering, terrorist activities or other crimes.

(b) where you are bidding on behalf of another person, you warrant that:

(i) you have conducted appropriate customer due diligence on the ultimate buyer(s) of the **lot(s)** in accordance with all applicable anti-money laundering and sanctions laws, consent to us relying on this due diligence, and you will retain for a period of not less than 5 years the documentation evidencing the due diligence. You will make such documentation promptly available for immediate inspection by an independent third-party auditor upon our written request to do so;

(ii) the arrangements between you and the ultimate buyer(s) in relation to the **lot** or otherwise do not, in whole or in part, facilitate tax crimes;

(iii) you do not know, and have no reason to suspect, that the funds used for settlement are connected with, the proceeds of any criminal activity, including tax evasion, or that the ultimate buyer(s) are under investigation, or have been charged with or convicted of money laundering, terrorist activities or other crimes.

F PAYMENT

1 HOW TO PAY

(a) Immediately following the auction, you must pay the **purchase price** being:

(i) the **hammer price**; and

(ii) the **buyer's premium**; and

(iii) any amounts due under section D3 above; and

(iv) any duties, goods, sales, use, compensating or service tax or VAT.

Payment is due no later than by the end of the seventh calendar day following the date of the auction (the **due date**).

(b) We will only accept payment from the registered bidder. Once issued, we cannot change the buyer's name on an invoice or re-issue the invoice in a different name. You must pay immediately even if you want to export the **lot** and you need an export licence.

(c) You must pay for **lots** bought at Christie's in the United Kingdom in the currency stated on the invoice in one of the following ways:

(i) Wire transfer

You must make payments to:

Lloyds Bank Plc, City Office, PO Box 217, 72 Lombard Street, London EC3P 3BT. Account number: 00172710, sort code: 30-00-02 Swift code: LOYDGB2LCTY. IBAN (international bank account number): GB81 LOYD 3000 0200 1727 10.

(ii) Credit Card.

We accept most major credit cards subject to certain conditions. You may make payment via credit card in person. You may also make a 'cardholder not present' (CNP) payment by calling Christie's Post-Sale Services Department on +44 (0)20 7752 3200 or for some sales, by logging into your MyChristie's account by going to: www.christies.com/mychristies. Details of the conditions and restrictions applicable to credit card payments are available from our Post-Sale Services Department, whose details are set out in paragraph (e) below.

If you pay for your purchase using a credit card issued outside the region of the sale, depending on the type of credit card and account you hold, the payment may incur a cross-border transaction fee. If you think this may apply to you, please check with your credit card issuer before making the payment.

Please note that for sales that permit online payment, certain transactions will be ineligible for credit card payment.

(iii) Cash

We accept cash subject to a maximum of £5,000 per buyer per year at our Cashier's Department only (subject to conditions).

(iv) Banker's draft

You must make these payable to Christie's and there may be conditions.

(v) Cheque

You must make cheques payable to Christie's. Cheques must be from accounts in pounds sterling from a United Kingdom bank.

(d) You must quote the sale number, **lot** number(s), your invoice number and Christie's client account number when making a payment. All payments sent by post must be sent to: Christie's, Cashiers Department, 8 King Street, St James's, London, SW1Y 6QT.

(e) For more information please contact our Post-Sale Service Department by phone on +44 (0)20 7752 3200 or fax on +44 (0)20 752 3300.

2. TRANSFERRING OWNERSHIP TO YOU

You will not own the **lot** and ownership of the **lot** will not pass to you until we have received full and clear payment of the **purchase price**, even in circumstances where we have released the **lot** to the buyer.

3 TRANSFERRING RISK TO YOU

The risk in and responsibility for the **lot** will transfer to you from whichever is the earlier of the following:

(a) When you collect the **lot**; or

(b) At the end of the 30th day following the date of the auction or, if earlier, the date the **lot** is taken into care by a third party warehouse as set out on the page headed 'Storage and Collection', unless we have agreed otherwise with you in writing.

4 WHAT HAPPENS IF YOU DO NOT PAY

(a) If you fail to pay us the **purchase price** in full by the **due date**, we will be entitled to do one or more of the following (as well as enforce our rights under paragraph F5 and any other rights or remedies we have by law):

(i) to charge interest from the **due date** at a rate of 5% a year above the UK Lloyds Bank base rate from time to time on the unpaid amount due;

(ii) we can cancel the sale of the **lot**. If we do this, we may sell the **lot** again, publicly or privately on such terms we shall think necessary or appropriate, in which case you must pay us any shortfall between the **purchase price** and the proceeds from the resale. You must also pay all costs, expenses, losses, damages and legal fees we have to pay to us, may suffer and any shortfall in the seller's commission on the resale;

(iii) we can pay the seller an amount up to the net proceeds payable in respect of the amount bid by your default in which case you acknowledge and understand that Christie's will have all of the rights of the seller to pursue you for such amounts;

(iv) we can hold you legally responsible for the **purchase price** and may begin legal proceedings to recover it together with other losses, interest, legal fees and costs as far as we are allowed by law;

(v) we can take what you owe us from any amounts which we or any company in the **Christie's Group** may owe you (including any deposit or other part-payment which you have paid to us);

(vi) we can, at our option, reveal your identity and contact details to the seller;

(vii) we can reject at any future auction any bids made by or on behalf of the buyer or to obtain a deposit from the buyer before accepting any bids;

(viii) to exercise all the rights and remedies of a person holding security over any property in our possession owned by you, whether by way of pledge, security interest or in any other way as permitted by the law of the place where such property is located. You will be deemed to have granted such security to us and we may retain such property as collateral security for your obligations to us; and

(ix) we can take any other action we see necessary or appropriate.

(b) If you owe money to us or to another **Christie's Group** company, we can use any amount you do pay, including any deposit or other part-payment you have made to us, or which we owe you, to pay off any amount you owe to us or another **Christie's Group** company for any transaction.

(c) If you make payment in full after the **due date**, and we choose to accept such payment we may charge you storage and transport costs from the date that is 30 calendar days following the auction in accordance with paragraphs Gd(i) and (ii). In such circumstances paragraph Gd(iv) shall apply.

5 KEEPING YOUR PROPERTY

If you owe money to us or to another **Christie's Group** company, as well as the rights set out in F4 above, we can use or deal with any of your property we hold or which is held by another **Christie's Group** company in any way we are allowed to by law. We will only release your property to you after you pay us or the relevant **Christie's Group** company in full for what you owe. However, if we choose, we can also sell your property in any way we think appropriate. We will use the proceeds of the sale

against any amounts you owe us and we will pay any amount left from that sale to you. If there is a shortfall, you must pay us any difference between the amount we have received from the sale and the amount you owe us.

G COLLECTION AND STORAGE

(a) You must collect purchased **lots** within thirty days from the auction (but note that **lots will not be released to you until you have made full and clear payment of all amounts due to us**).

(b) Information on collecting **lots** is set out on the Storage and Collection page and on an information sheet which you can get from the bidder registration staff or Christie's Post-Sale Services Department on +44 (0)20 7752 3200.

(c) If you do not collect any **lot** within thirty days following the auction we can, at our option:

(i) charge you storage costs at the rates set out at www.christies.com/storage.

(ii) move the **lot** to another Christie's location or an affiliate or third party warehouse and charge you transport costs and administration fees for doing so and you will be subject to the third party storage warehouse's standard terms and to pay for their standard fees and costs.

(iii) sell the **lot** in any commercially reasonable way we think appropriate.

(d) The Storage Conditions which can be found at www.christies.com/storage will apply.

H TRANSPORT AND SHIPPING

1 TRANSPORT AND SHIPPING

We will enclose a transport and shipping form with each invoice sent to you. You must make all transport and shipping arrangements. However, we can arrange to pack, transport and ship your property if you ask us to and pay the costs of doing so. We recommend that you ask us for an **estimate**, especially for any large items or items of high value that need professional packing before you bid. We may also suggest other handlers, packers, transporters or experts if you ask us to do so. For more information, please contact Christie's Art Transport on +44 (0)20 7639 9060. See the information set out at www.christies.com/shipping or contact us at arttransport@christies.com. We will take reasonable care when we are handling, packing, transporting and shipping a **lot**. However, if we recommend another company for any of these purposes, we are not responsible for their acts, failure to act or neglect.

2 EXPORT AND IMPORT

Any **lot** sold at auction may be affected by laws on exports from the country in which it is sold and the import restrictions of other countries. Many countries require a declaration of export for property leaving the country and/or an import declaration on entry of property into the country. Local laws may prevent you from importing a **lot** or may prevent you selling a **lot** in the country you import it into. We will not be obliged to cancel your purchase and refund the **purchase price** if your **lot** may not be exported, imported or it is seized for any reason by a government authority. It is your responsibility to determine and satisfy the requirements of any applicable laws or regulations relating to the export or import of any **lot** you purchase.

(a) You alone are responsible for getting advice about and meeting the requirements of any laws or regulations which apply to exporting or importing any **lot** prior to bidding. If you are refused a licence or there is a delay in getting one, you must still pay us in full for the **lot**. We may be able to help you apply for the appropriate licences if you ask us to and pay our fee for doing so. However, we cannot guarantee that you will get one.

For more information, please contact Christie's Art Transport Department on +44 (0)20 7639 9060. See the information set out at www.christies.com/shipping or contact us at arttransport@christies.com.

(b) Lots made of protected species

Lots made of or including (regardless of the percentage) endangered and other protected species of wildlife are marked with the symbol in the catalogue. This material includes, among other things, ivory, tortoiseshell, crocodile skin, rhinoceros horn, whalebone, certain species of coral, and Brazilian rosewood. You should check the relevant customs laws and regulations before bidding on any **lot** containing wildlife material if you plan to import the **lot** into another country. Several countries refuse to allow you to import property containing these materials, and some other countries require a licence from the relevant regulatory agencies in the countries of exportation as well as importation. In some cases, the **lot** can only be shipped with an independent scientific confirmation of species and/or age and you will need to obtain these at your own cost. If a **lot** contains elephant ivory, or any other wildlife material that could be confused with elephant ivory (for example, mammoth ivory, walrus ivory, helmeted hornbill ivory), please see further important information in paragraph (c) if you are proposing to import the **lot** into the USA. We will not be obliged to cancel your purchase and refund the **purchase price** if your **lot** may not be exported, imported or it is seized for any reason by a government authority. It is your responsibility to determine and satisfy the requirements of any applicable laws or regulations relating to the export or import of property containing such protected or regulated material.

(c) US import ban on African elephant ivory

The USA prohibits the import of ivory from the African elephant. Any **lot** containing elephant ivory or other wildlife material that could be easily confused with elephant ivory (for example, mammoth ivory, walrus ivory, helmeted hornbill ivory) can only be imported into the US with results of a rigorous scientific test acceptable to Fish & Wildlife, which confirms that the material is not African elephant ivory. Where we have conducted such rigorous scientific testing on a **lot** prior to sale, we will make this clear in the **lot** description. In all other cases, we cannot confirm whether a **lot** contains African elephant ivory, and you will buy that **lot** at your own risk and be responsible for any scientific test or other reports required for import into the USA at your own cost. If such scientific test is inconclusive or confirms the material is from the African elephant, we will not be obliged to cancel your purchase and refund the **purchase price**.

(d) Lots of Iranian origin

Some countries prohibit or restrict the purchase and/or import of Iranian-origin 'works of conventional craftsmanship' (works that are not by a recognised artist and/or that have a function, for example: carpets, bowls, ewers, tiles, ornamental boxes). For example, the USA prohibits the import of this type of property and its purchase by US persons (wherever located). Other countries only permit the import of this property in certain circumstances. As a convenience to buyers, Christie's indicates under the title of a **lot** if the **lot** originates from Iran (Persia). It is your responsibility to ensure you do not bid on or import a **lot** in contravention of the sanctions or trade embargoes that apply to you.

(e) Gold

Gold of less than 18ct does not qualify in all countries as 'gold' and may be refused import into those countries as 'gold'.

(f) Jewellery over 50 years old

Under current laws, jewellery over 50 years old which is worth £39,219 or more will require an export licence which we can apply for on your behalf. It may take up to eight weeks to obtain the export jewellery licence.

(g) Watches

Many of the watches offered for sale in this catalogue are pictured with straps made of endangered or protected animal materials such as alligator or crocodile. These lots are marked with the symbol **W** in the catalogue. These endangered species straps are shown for display purposes only and are not for sale. Christie's will remove and retain the strap prior to shipment from the sale site. At some sale sites, Christie's may, at its discretion, make the displayed endangered species strap available to the buyer of the **lot** free of charge if collected in person from the sale site within one year of the date of the sale. Please check with the department for details on a particular **lot**.

For all symbols and other markings referred to in paragraph H2, please note that **lots** are marked as a convenience to you, but we do not accept liability for errors or for failing to mark **lots**.

I OUR LIABILITY TO YOU

(a) We give no **warranty** in relation to any statement made, or information given, by us or our representatives or employees, about any **lot** other than that set out in the **authenticity warranty** and, as far as we are allowed by law, all **warranties** and other terms which may be added to this agreement by law are excluded. The seller's **warranties** contained in paragraph E1 are their own and we do not have any liability to you in relation to those **warranties**.

(b) (i) We are not responsible to you for any reason (whether for breaking this agreement or any other matter relating to your purchase of, or bid for, any **lot**) other than in the event of fraud or fraudulent misrepresentation by us or other than as expressly set out in these Conditions of Sale; or

(ii) We do not give any representation, **warranty** or guarantee or assume any liability of any kind in respect of any **lot** with regard to merchantability, fitness for a particular purpose, description, size, quality, condition, attribution, authenticity, rarity, importance, medium, provenance, exhibition history, literature, or historical relevance. Except as required by local law, any **warranty** of any kind is excluded by this paragraph.

(c) In particular, please be aware that our written and telephone bidding services, Christie's LIVE™, **condition** reports, currency converter and saleroom video screens are free services and we are not responsible to you for any error (human or otherwise), omission or breakdown in these services.

(d) We have no responsibility to any person other than a buyer in connection with the purchase of any **lot**.

(e) If, in spite of the terms in paragraphs (a) to (d) or E2(i) above, we are found to be liable to you for any reason, we shall not have to pay more than the **purchase price** paid by you to us. We will not be responsible to you for any reason for loss of profits or business, loss of opportunity or value, expected savings or interest, costs, damages, or expenses.

J OTHER TERMS

1 OUR ABILITY TO CANCEL

In addition to the other rights of cancellation contained in this agreement, we can cancel a sale of a **lot** if: (i) any of your warranties in paragraph E3 are not correct; (ii) we reasonably believe that completing the transaction is or may be unlawful; or (iii) we reasonably believe that the sale places us or the seller under any liability to anyone else or may damage our reputation.

2 RECORDINGS

We may videotape and record proceedings at any auction. We will keep any personal information confidential, except to the extent disclosure is required by law. However, we may, through this process, use or share these recordings with another Christie's Group company and marketing partners to analyse our customers and to help us to tailor our services for buyers. If you do not want to be videotaped, you may make arrangements to make a telephone or written bid or bid on Christie's LIVE™ instead. Unless we agree otherwise in writing, you may not videotape or record proceedings at any auction.

3 COPYRIGHT

We own the copyright in all images, illustrations and written material produced by or for us relating to a **lot** (including the contents of our catalogues unless otherwise noted in the catalogue). You cannot use them without our prior written permission. We do not offer any guarantee that you will gain any copyright or other reproduction rights to the **lot**.

4 ENFORCING THIS AGREEMENT

If a court finds that any part of this agreement is not valid or is illegal or impossible to enforce, that part of the agreement will be treated as being deleted and the rest of this agreement will not be affected.

5 TRANSFERRING YOUR RIGHTS AND RESPONSIBILITIES

You may not grant a security over or transfer your rights or responsibilities under these terms on the contract of sale with the buyer unless we have given our written permission. This agreement will be binding on your successors or estate and anyone who takes over your rights and responsibilities.

6 TRANSLATIONS

If we have provided a translation of this agreement, we will use this original version in deciding any issues or disputes which arise under this agreement.

7 PERSONAL INFORMATION

We will hold and process your personal information and may pass it to another Christie's Group company for use as described in, and in line with, our privacy notice at www.christies.com/about-us/contact/privacy.

8 WAIVER

No failure or delay to exercise any right or remedy provided under these Conditions of Sale shall constitute a waiver of that or any other right or remedy, nor shall it prevent or restrict the further exercise of that or any other right or remedy. No single or partial exercise of such right or remedy shall prevent or restrict the further exercise of that or any other right or remedy.

9 LAW AND DISPUTES

This agreement, and any non-contractual obligations arising out of or in connection with this agreement, or any other rights you may have relating to the purchase of a **lot** will be governed by the laws of England and Wales. Before we or you start any court proceedings (except in the limited circumstances where the dispute, controversy or claim is related to proceedings brought by someone else and this dispute could be joined to those proceedings), we agree we will each try to settle the dispute by mediation following the Centre for Effective Dispute Resolution (CEDR) Model Mediation Procedure. We will use a mediator affiliated with CEDR who we and you agree to. If the dispute is not settled by mediation, you agree for our benefit that the dispute will be referred to and dealt with exclusively in the courts of England and Wales. However, we will have the right to bring proceedings against you in any other court.

10 REPORTING ON WWW.CHRISTIES.COM

Details of all **lots** sold by us, including catalogue descriptions and prices, may be reported on www.christies.com. Sales totals are **hammer price plus buyer's premium** and do not reflect costs, financing fees, or application of buyer's or seller's credits. We regret that we cannot agree to requests to remove these details from www.christies.com.

K GLOSSARY

auctioneer: the individual auctioneer and/or Christie's.

authentic: a genuine example, rather than a copy or forgery of:

(i) the work of a particular artist, author or manufacturer, if the **lot** is described in the **Heading** as the work of that artist, author or manufacturer;

(ii) a work created within a particular period or culture, if the **lot** is described in the **Heading** as a work created during that period or culture;

(iii) a work for a particular origin source if the **lot** is described in the **Heading** as being of that origin or source; or

(iv) in the case of gems, a work which is made of a particular material, if the **lot** is described in the **Heading** as being made of that material.

authenticity warranty: the guarantee we give in this agreement that a **lot** is **authentic** as set out in section E2 of this agreement.

buyer's premium: the charge the buyer pays us along with the **hammer price**.

catalogue description: the description of a **lot** in the catalogue for the auction, as amended by any saleroom notice.

Christie's Group: Christie's International Plc, its subsidiaries and other companies within its corporate group.

condition: the physical condition of a **lot**.

due date: has the meaning given to it in paragraph F1(a).

estimate: the price range included in the catalogue or any saleroom notice within which we believe a **lot** may sell. **Low estimate** means the lower figure in the range and **high estimate** means the higher figure. The **mid estimate** is the midpoint between the two.

hammer price: the amount of the highest bid the **auctioneer** accepts for the sale of a **lot**.

Heading: has the meaning given to it in paragraph E2.

lot: an item to be offered at auction (or two or more items to be offered at auction as a group).

other damages: any special, consequential, incidental or indirect damages of any kind or any damages which fall within the meaning of 'special', 'incidental' or 'consequential' under local law.

purchase price: has the meaning given to it in paragraph F1(a).

provenance: the ownership history of a **lot**.

qualified: has the meaning given to it in paragraph E2 and **Qualified Headings** means the section headed **Qualified Headings** on the page of the catalogue headed 'Important Notices and Explanation of Cataloguing Practice'.

reserve: the confidential amount below which we will not sell a **lot**.

saleroom notice: a written notice posted next to the **lot** in the saleroom and on www.christies.com, which is also read to prospective telephone bidders and notified to clients who have left commission bids, or an announcement made by the **auctioneer** either at the beginning of the sale, or before a particular **lot** is auctioned.

UPPER CASE type: means having all capital letters.

warranty: a statement or representation in which the person making it guarantees that the facts set out in it are correct.

VAT SYMBOLS AND EXPLANATION

IMPORTANT NOTICE:

The VAT liability in force on the date of the sale will be the rules under which we invoice you.

BREXIT: If the UK withdraws from the EU without an agreed transition deal relating to the import and export of property, your invoiced VAT position may retrospectively change and additional import tariffs may be due if you import your purchase into the EU. Christie's is unable to provide tax or financial advice to you and recommends you obtain your own independent tax advice.

You can find a glossary explaining the meanings of words coloured in bold on this page at the end of the section of the catalogue headed 'Conditions of Sale' VAT payable

Symbol	
No Symbol	We will use the VAT Margin Scheme. No VAT will be charged on the hammer price . VAT at 20% will be added to the buyer's premium but will not be shown separately on our invoice.
† θ	We will invoice under standard VAT rules and VAT will be charged at 20% on both the hammer price and buyer's premium and shown separately on our invoice. For qualifying books only, no VAT is payable on the hammer price or the buyer's premium .
*	These lots have been imported from outside the EU or, if the UK has withdrawn from the EU without an agreed transition deal, from outside of the UK for sale and placed under the Temporary Admission regime. Import VAT is payable at 5% on the hammer price . VAT at 20% will be added to the buyer's premium but will not be shown separately on our invoice.
Ω	These lots have been imported from outside the EU or, if the UK has withdrawn from the EU without an agreed transition deal, from outside of the UK for sale and placed under the Temporary Admission regime. Customs Duty as applicable will be added to the hammer price and Import VAT at 20% will be charged on the Duty Inclusive hammer price . VAT at 20% will be added to the buyer's premium but will not be shown separately on our invoice.
α	The VAT treatment will depend on whether you have registered to bid with an EU address or, if the UK has withdrawn from the EU without an agreed transition deal, a UK address or non-EU address: <ul style="list-style-type: none"> • If you register to bid with an address within the EU or UK (as applicable above) you will be invoiced under the VAT Margin Scheme (see No Symbol above). • If you register to bid with an address outside of the EU or UK (as applicable above) you will be invoiced under standard VAT rules (see † symbol above)
‡	For wine offered 'in bond' only. If you choose to buy the wine in bond no Excise Duty or Clearance VAT will be charged on the hammer . If you choose to buy the wine out of bond Excise Duty as applicable will be added to the hammer price and Clearance VAT at 20% will be charged on the Duty inclusive hammer price . Whether you buy the wine in bond or out of bond, 20% VAT will be added to the buyer's premium and shown on the invoice.

VAT refunds: what can I reclaim? If you are:

Non-VAT registered UK buyer or Non-VAT registered EU buyer (please refer to the below category if you are a Non-VAT registered EU buyer and the UK has withdrawn from the EU without an agreed transition deal)		No VAT refund is possible
UK VAT registered buyer	No symbol and α	The VAT amount in the buyer's premium cannot be refunded. However, on request we can re-invoice you outside of the VAT Margin Scheme under normal UK VAT rules (as if the lot had been sold with a † symbol). Subject to HMRC's rules, you can then reclaim the VAT charged through your own VAT return.
	* and Ω	Subject to HMRC's rules, you can reclaim the Import VAT charged on the hammer price through your own VAT return when you are in receipt of a C79 form issued by HMRC. The VAT amount in the buyer's premium is invoiced under Margin Scheme rules so cannot normally be claimed back. However, if you request to be re-invoiced outside of the Margin Scheme under standard VAT rules (as if the lot had been sold with a † symbol) then, subject to HMRC's rules, you can reclaim the VAT charged through your own VAT return.
EU VAT registered buyer (please refer to the below category if the UK has withdrawn from the EU without an agreed transition deal)	No Symbol and α	The VAT amount in the buyer's premium cannot be refunded. However, on request we can re-invoice you outside of the VAT Margin Scheme under normal UK VAT rules (as if the lot had been sold with a † symbol). See below for the rules that would then apply.
	†	If you provide us with your EU VAT number we will not charge VAT on the buyer's premium . We will also refund the VAT on the hammer price if you ship the lot from the UK and provide us with proof of shipping, within three months of collection.
	* and Ω	The VAT amount on the hammer price and in the buyer's premium cannot be refunded. However, on request we can re-invoice you outside of the VAT Margin Scheme under normal UK VAT rules (as if the lot had been sold with a † symbol). See above for the rules that would then apply.
Non-EU buyer or Non-VAT registered EU buyer (if the UK has withdrawn from the EU without an agreed transition deal) or EU VAT registered buyer (if the UK has withdrawn from the EU without an agreed transition deal)		If you meet ALL of the conditions in notes 1 to 3 below we will refund the following tax charges:
	No Symbol	We will refund the VAT amount in the buyer's premium .
	† and α	We will refund the VAT charged on the hammer price . VAT on the buyer's premium can only be refunded if you are an overseas business. The VAT amount in the buyer's premium cannot be refunded to non-trade clients.
	‡ (wine only)	No Excise Duty or Clearance VAT will be charged on the hammer price providing you export the wine while 'in bond' directly outside the EU or, if the UK has withdrawn from the EU without an agreed transition deal, outside of the UK using an Excise authorised shipper. VAT on the buyer's premium can only be refunded if you are an overseas business. The VAT amount in the buyer's premium cannot be refunded to non-trade clients.
	* and Ω	We will refund the Import VAT charged on the hammer price and the VAT amount in the buyer's premium .

1. We **CANNOT** offer refunds of VAT amounts or Import VAT to buyers who do not meet all applicable conditions in full. If you are unsure whether you will be entitled to a refund, please contact Client Services at the address below **before you bid**.
 2. No VAT amounts or Import VAT will be refunded where the total refund is under £100.
 3. To receive a refund of VAT amounts/Import VAT (as applicable) a non-EU or EU

buyer (as applicable) must:
 (a) have registered to bid with an address outside of the EU (prior to the UK withdrawing from the EU without an agreed transition deal) or UK (after the UK has withdrawn from the EU without an agreed transition deal); **and**
 (b) provide immediate proof of correct export out of the EU or UK (as applicable pursuant to (a) above within the required time frames of: 30 days via

a 'controlled export' for * and Ω lots. All other lots must be exported within three months of collection.
 4. Details of the documents which you must provide to us to show satisfactory proof of export/shipping are available from our VAT team at the address below. We charge a processing fee of £35.00 per invoice to check shipping/export documents. We will waive this processing fee if

you appoint Christie's Shipping Department to arrange your export/shipping.
 5. If you appoint Christie's Art Transport or one of our authorised shippers to arrange your export/shipping we will issue you with an export invoice with the applicable VAT or duties cancelled as outlined above. If you later cancel or change the shipment in a manner that infringes the rules outlined above we will issue a

revised invoice charging you all applicable taxes/charges.
 6. If you ask us to re-invoice you under normal UK VAT rules (as if the lot had been sold with a † symbol) instead of under the Margin Scheme the lot may become ineligible to be resold using the Margin Schemes. Prior to the UK withdrawing from the EU without an agreed transition deal, **movement within the EU must be within 3 months**

from the date of sale. You should take professional advice if you are unsure how this may affect you.
 7. All re-invoicing requests must be received within four years from the date of sale. If you have any questions about VAT refunds please contact Christie's Client Services on info@christies.com
 Tel: +44 (0)20 7389 2886.
 Fax: +44 (0)20 7389 1611.

SYMBOLS USED IN THIS CATALOGUE

The meaning of words coloured in **bold** in this section can be found at the end of the section of the catalogue headed 'Conditions of Sale'.

o

Christie's has a direct financial interest in the lot. See Important Notices and Explanation of Cataloguing Practice.

△

Owned by Christie's or another **Christie's Group** company in whole or part. See Important Notices and Explanation of Cataloguing Practice.

◆

Christie's has a direct financial interest in the **lot** and has funded all or part of our interest with the help of someone else. See Important Notices and Explanation of Cataloguing Practice.

□

Bidding by interested parties.

λ

Artist's Resale Right. See Section D3 of the Conditions of Sale.

•

Lot offered without **reserve** which will be sold to the highest bidder regardless of the pre-sale estimate in the catalogue.

~

Lot incorporates material from endangered species which could result in export restrictions. See Section H2(b) of the Conditions of Sale.

Ψ

Lot incorporates material from endangered species which is shown for display purposes only and is not for sale. See Section H2(g) of the Conditions of Sale.

†, *, Ω, α, ‡

See VAT Symbols and Explanation.

■

See Storage and Collection Page.

Please note that **lots** are marked as a convenience to you and we shall not be liable for any errors in, or failure to, mark a **lot**.

IMPORTANT NOTICES

CHRISTIE'S INTEREST IN PROPERTY CONSIGNED FOR AUCTION

△ **Property Owned in part or in full by Christie's**

From time to time, Christie's may offer a **lot** which it owns in whole or in part. Such property is identified in the catalogue with the symbol △ next to its **lot** number. Where Christie's has an ownership or financial interest in every **lot** in the catalogue, Christie's will not designate each **lot** with a symbol, but will state its interest in the front of the catalogue.

o **Minimum Price Guarantees**

On occasion, Christie's has a direct financial interest in the outcome of the sale of certain lots consigned for sale. This will usually be where it has guaranteed to the Seller that whatever the outcome of the auction, the Seller will receive a minimum sale price for the work. This is known as a minimum price guarantee. Where Christie's holds such financial interest we identify such **lots** with the symbol o next to the **lot** number.

o◆ **Third Party Guarantees/Irrevocable bids**

Where Christie's has provided a Minimum Price Guarantee it is at risk of making a loss, which can be significant, if the **lot** fails to sell. Christie's therefore sometimes chooses to share that risk with a third party who agrees prior to the auction to place an irrevocable written bid on the lot. If there are no other higher bids, the third party commits to buy the lot at the level of their irrevocable written bid. In doing so, the third party takes on all or part of the risk of the **lot** not being sold. **Lots** which are subject to a third party guarantee arrangement are identified in the catalogue with the symbol o◆.

In most cases, Christie's compensates the third party in exchange for accepting this risk. Where the third party is the successful bidder, the third party's remuneration is based on a fixed financing fee. If the third party is not the successful bidder, the remuneration may either be based on a fixed fee or an amount calculated against the final **hammer price**. The third party may also bid for the **lot** above the irrevocable written bid. Where the third party is the successful bidder, Christie's will report the **purchase price** net of the fixed financing fee.

Third party guarantors are required by us to disclose to anyone they are advising their financial interest in any **lots** they are guaranteeing. However, for the avoidance of any doubt, if you are advised by or bidding through an agent on a **lot** identified as being subject to a third party guarantee you should always ask your agent to confirm whether or not he or she has a financial interest in relation to the **lot**.

□ **Bidding by parties with an interest**

When a party with a direct or indirect interest in the **lot** who may have knowledge of the **lot's reserve** or other material information may be bidding on the **lot**, we will mark the **lot** with this symbol □. This interest can include beneficiaries of an estate that consigned the **lot** or a joint owner of a **lot**. Any interested party that successfully bids on a **lot** must comply with Christie's Conditions of Sale, including paying the **lot's** full Buyer's Premium plus applicable taxes.

Post-catalogue notifications

In certain instances, after the catalogue has been published, Christie's may enter into an arrangement or become aware of bidding that would have required a catalogue symbol. In those instances, a pre-sale or pre-**lot** announcement will be made.

Other Arrangements

Christie's may enter into other arrangements not involving bids. These include arrangements where Christie's has given the Seller an Advance on the proceeds of sale of the **lot** or where Christie's has shared the risk of a guarantee with a partner without the partner being required to place an irrevocable written bid or otherwise participating in the bidding on the **lot**. Because such arrangements are unrelated to the bidding process they are not marked with a symbol in the catalogue.

Please see <http://www.christies.com/financial-interest/> for a more detailed explanation of minimum price guarantees and third party financing arrangements.

POST 1950 FURNITURE

All items of post-1950 furniture included in this sale are items either not originally supplied for use in a private home or now offered solely as works of art. These items may not comply with the provisions of the Furniture and Furnishings (Fire) (Safety) Regulations 1988 (as amended in 1989 and 1993, the 'Regulations'). Accordingly, these items should not be used as furniture in your home in their current condition. If you do intend to use such items for this purpose, you must first ensure that they are reupholstered, restuffed and/or recovered (as appropriate) in order that they comply with the provisions of the Regulations.

FOR JEWELLERY

Terms used in this catalogue have the meanings ascribed to them below. Please note that all statements in this catalogue as to Authorship are made subject to the provisions of the Conditions of Sale and **limited warranty**.

Jewellers in the Title

1. By Boucheron

When maker's name appears in the title, in Christie's qualified opinion it is by that maker.

Jewellers beneath the description

2. Signed Boucheron

Has signature which in Christie's qualified opinion is authentic.

3. With maker's mark for Boucheron

Has a mark denoting a maker which in Christie's qualified opinion is authentic.

4. By Boucheron

In Christie's qualified opinion the object is by the jeweller although unsigned.

5. Mounted by Boucheron

In Christie's qualified opinion the setting has been created by the jeweller using stones originally supplied by the jeweller's client.

6. Mount only by Boucheron

In Christie's qualified opinion the mounting is by the jeweller, but either the gemstones have been replaced or the piece has been altered in some way after its manufacture.

Periods

1. Antique

Over 100 years old

2. Art Nouveau

1895-1910

3. Belle Epoque

1895-1914

4. Art Deco

1915-1935

5. Retro

1940s



TOPAZ AND DIAMOND NECKLACE, JAR
€130,000-150,000

FINE JEWELS

Paris, 13 June 2019

VIEWING

7-13 June 2019
9, Avenue Matignon
75008 Paris

CONTACT

Violaine d'Astorg
vdastorg@christies.com
+33 1 40 76 85 81

Other fees apply in addition to the hammer price. See Section D of our Conditions of Sale at the back of the Auction Catalogue

CHRISTIE'S



The Peninsula Estate – Porto Cervo, Sardinia, Italy

This contemporary four-hectare estate situated on a private peninsula includes a 1,300-square-meter residence with breathtaking sea views over the Archipelago de La Maddalena Islands, a private dock, two moorings, 3 beaches, pool, helicopter landing, a guest house, parkland, and 1 km of private coastline. Listed by ImmobiliSarda Srl. Price upon request

Art. Beauty. Provenance.

Charlotte Delaney
+44 (0) 20 7389 2551
cdelaney@christies.com

Julia Bracco
+39 0789 909000
juliabracco@immobilsarda.com

immobilsarda.com
christiesrealestate.com



A RECTANGULAR PARCEL-GILT, GILT-BRONZE AND ROCK CRYSTAL CASKET
VENETIAN, CIRCA 1600

Provenance: By repute, Pope Paul V (1550-1621), and by descent in the Borghese family collection, Rome.

William Beckford (1760-1844), probably acquired through the agent Georgio Franchi in Rome.

Hugh, 1st Duke of Westminster (1825-1899).

Probably acquired by Baron Gustave de Rothschild (1829-1911).

£100,000 - 150,000

**MASTERPIECES FROM
A ROTHSCHILD COLLECTION**

London, 4 July 2019

VIEWING

29 June - 3 July 2019

8 King Street

London SW1Y 6QT

CONTACT

Paul Gallois

pgallois@christies.com

+44 (0)20 7389 2260

Other fees apply in addition to the hammer price. See Section D of our Conditions of Sale at the back of the Auction Catalogue

CHRISTIE'S



A TOILE MONOGRAM DESK TRUNK WITH BRASS HARDWARE, LOUIS VUITTON, circa. 1920
£15,000 - £20,000

HANDBAGS & ACCESSORIES

London, 11 June 2019

VIEWING

1 - 11 June 2019
8 King Street
London SW1Y 6QT

CONTACT

Rachel Koffsky
RKoffsky@christies.com
+44 (0)20 7752 3164

Lucile Andreani
LAndreani@christies.com
+33 (0) 140 767 249

Other fees apply in addition to the hammer price. See Section D of our Conditions of Sale at the back of the Auction Catalogue

CHRISTIE'S



FRENCH ENAMEL AND GOLD SNUFF-BOX BY GABRIEL-RAOUL MOREL,
PARIS, CIRCA 1820
£80,000-120,000

GOLD BOXES

London, 3 July 2019

VIEWING

28 June - 3 July 2019
8 King Street
London SW1Y 6QT

CONTACT

David McLachlan
dmclachlan@christies.com
+44 (0)20 7389 2650

Other fees apply in addition to the hammer price. See Section D of our Conditions of Sale at the back of the Auction Catalogue

CHRISTIE'S

LEARN THE WAY YOU WANT TO

CHRISTIE'S
EDUCATION

[LEARN MORE AT CHRISTIES.EDU](https://www.christies.edu)

DEGREE PROGRAMMES • CONTINUING EDUCATION • ONLINE COURSES

LONDON • NEW YORK • HONG KONG

WORLDWIDE SALEROOMS AND OFFICES AND SERVICES

ARGENTINA

BUENOS AIRES
+54 11 43 93 42 22
Cristina Carlisle

AUSTRALIA

SYDNEY
+61 (0)2 9326 1422
Ronan Sulich

AUSTRIA

VIENNA
+43 (0)1 533 881214
Angela Bailou

BELGIUM

BRUSSELS
+32 (0)2 512 88 30
Roland de Lathuy

BRAZIL

SÃO PAULO
+55 21 3500 8944
Marina Bertoldi

CANADA

TORONTO
+1 647 519 0957
Brett Sherlock (Consultant)

CHILE

SANTIAGO
+56 2 2 2631642
Denise Ratinoff de Lira

COLOMBIA

BOGOTA
+571 635 54 00
Juanita Madrinan
(Consultant)

DENMARK

COPENHAGEN
+45 2612 0092
Rikke Juul Brandt (Consultant)

FRANCE

**BRITTANY AND
THE LOIRE VALLEY**
+33 (0)6 09 44 90 78
Virginie Gregory (Consultant)

GREATER

EASTERN FRANCE
+33 (0)6 07 16 34 25
Jean-Louis Janin Daviet
(Consultant)

NORD-PAS DE CALAIS

+33 (0)6 09 63 21 02
Jean-Louis Brémilts
(Consultant)

•PARIS

+33 (0)1 40 76 85 85

PROVENCE -

ALPES CÔTE D'AZUR
+33 (0)6 71 99 97 67
Fabienne Albertini-Cohen

RHÔNE ALPES

+33 (0)6 61 81 82 53
Dominique Pierron
(Consultant)

GERMANY

DÜSSELDORF
+49 (0)2114 91 59 352
Arno Verkade

FRANKFURT

+49 170 840 7950
Natalie Radziwill

HAMBURG

+49 (0)40 27 94 073
Christiane Gräfin
zu Rantzau

MUNICH

+49 (0)89 24 20 96 80
Marie Christine Gräfin Huyn

STUTTGART

+49 (0)71 12 26 96 99
Eva Susanne Schweizer

INDIA

MUMBAI
+91 (22) 2280 7905
Sonal Singh

INDONESIA

JAKARTA
+62 (0)21 7278 6268
Charmie Hamami

ISRAEL

TEL AVIV
+972 (0)3 695 0695
Roni Gilat-Baharaff

ITALY

•MILAN
+39 02 303 2831
Cristiano De Lorenzo

ROME

+39 06 686 3333
Marina Cicogna (Consultant)

NORTH ITALY

+39 348 3131 021
Paola Gradi (Consultant)

TURIN

+39 347 2211 541
Chiara Massimello
(Consultant)

VENICE

+39 041 277 0086
Bianca Arrivabene Valenti
Gonzaga (Consultant)

BOLOGNA

+39 051 265 154
Benedetta Possati
Vittori Venenti (Consultant)

GENOA

+39 010 245 3747
Rachele Guicciardi
(Consultant)

FLORENCE

+39 335 704 8823
Alessandra Niccolini di
Camugliano (Consultant)

CENTRAL &

SOUTHERN ITALY
+39 348 520 2974
Alessandra Allaria
(Consultant)

JAPAN

TOKYO
+81 (0)3 6267 1766
Chie Banta

MALAYSIA

KUALA LUMPUR
+62 (0)21 7278 6268
Charmie Hamami

MEXICO

MEXICO CITY
+52 55 5281 5446
Gabriela Lobo

MONACO

+377 97 97 11 00
Nancy Dotta

THE NETHERLANDS

•AMSTERDAM
+31 (0)20 57 55 255
Arno Verkade

NORWAY

OSLO
+47 949 89 294
Cornelia Svedman
(Consultant)

PEOPLE'S REPUBLIC

OF CHINA

BEIJING
+86 (0)10 8583 1766
Julia Hu

•HONG KONG

+852 2760 1766

•SHANGHAI

+86 (0)21 6355 1766
Julia Hu

PORTUGAL

LISBON
+351 919 317 233
Mafalda Pereira Coutinho
(Consultant)

RUSSIA

MOSCOW
+7 495 937 6364
+44 20 7389 2318
Zain Talyarkhan

SINGAPORE

SINGAPORE
+65 6735 1766
Jane Ngiam

SOUTH KOREA

SEOUL
+82 2 720 5266
Jun Lee

SPAIN

MADRID
+34 (0)91 532 6626
Carmen Schjaer
Dalia Padilla

SWEDEN

STOCKHOLM
+46 (0)73 645 2891
Claire Ahman (Consultant)
+46 (0)70 9369 201
Louise Dyhlén (Consultant)

SWITZERLAND

•GENEVA
+41 (0)22 319 1766
Eveline de Proyart

•ZURICH

+41 (0)44 268 1010
Jutta Nixdorf

TAIWAN

TAIPEI
+886 2 2736 3356
Ada Ong

THAILAND

BANGKOK
+66 (0) 2 252 3685
Prapavadee Sophonpanich

TURKEY

ISTANBUL
+90 (532) 558 7514
Eda Kehale Argün
(Consultant)

UNITED ARAB EMIRATES

•DUBAI
+971 (0)4 425 5647

UNITED KINGDOM

•LONDON
+44 (0)20 7839 9060

NORTH AND NORTHEAST

+44 (0)20 7104 5702
Thomas Scott

NORTHWEST

AND WALES
+44 (0)20 7752 3033
Jane Blood

SOUTH

+44 (0)1730 814 300
Mark Wrey

SCOTLAND

+44 (0)131 225 4756
Bernard Williams
Robert Lagneau
David Bowes-Lyon (Consultant)

ISLE OF MAN

+44 (0)20 7389 2032

CHANNEL ISLANDS

+44 (0)20 7389 2032

IRELAND

+353 (0)87 638 0996
Christine Ryall (Consultant)

UNITED STATES

CHICAGO
+1 312 787 2765
Catherine Busch

DALLAS

+1 214 599 0735
Caperia Ryan

HOUSTON

+1 713 802 0191
Jessica Phifer

LOS ANGELES

+1 310 385 2600
Sonya Roth

MIAMI

+1 305 445 1487
Jessica Katz

•NEW YORK

+1 212 636 2000

PALM BEACH

+1 561 777 4275
David G. Ober (Consultant)

SAN FRANCISCO

+1 415 982 0982
Ellanor Notides

AUCTION SERVICES

CORPORATE COLLECTIONS

Tel: +44 (0)20 7389 2548
Email: norchard@christies.com

FINANCIAL SERVICES

Tel: +44 (0)20 7389 2624
Fax: +44 (0)20 7389 2204

HERITAGE AND TAXATION

Tel: +44 (0)20 7389 2101
Fax: +44 (0)20 7389 2300
Email: rcornett@christies.com

PRIVATE COLLECTIONS AND COUNTRY HOUSE SALES

Tel: +44 (0)20 7389 2343
Fax: +44 (0)20 7389 2225
Email: awaters@christies.com

MUSEUM SERVICES, UK

Tel: +44 (0)20 7389 2570
Email: llindsay@christies.com

VALUATIONS

Tel: +44 (0)20 7389 2464
Fax: +44 (0)20 7389 2038
Email: mwrey@christies.com

OTHER SERVICES

CHRISTIE'S EDUCATION LONDON

Tel: +44 (0)20 7665 4350
Fax: +44 (0)20 7665 4351
Email: london@christies.edu

NEW YORK

Tel: +1 212 355 1501
Fax: +1 212 355 7370
Email: newyork@christies.edu

HONG KONG

Tel: +852 2978 6768
Fax: +852 2525 3856
Email: hongkong@christies.edu

CHRISTIE'S FINE ART STORAGE SERVICES

NEW YORK
+1 212 974 4570
Email: newyork@cass.com

CHRISTIE'S INTERNATIONAL REAL ESTATE

NEW YORK
Tel +1 212 468 7182
Fax +1 212 468 7141
Email: info@christiesrealestate.com

CHRISTIE'S INTERNATIONAL REAL ESTATE

NEW YORK
Tel +1 212 468 7182
Fax +1 212 468 7141
Email: info@christiesrealestate.com

CHRISTIE'S INTERNATIONAL REAL ESTATE

LONDON
Tel +44 20 7389 2551
Fax +44 20 7389 2168
Email: info@christiesrealestate.com

CHRISTIE'S INTERNATIONAL REAL ESTATE

HONG KONG
Tel +852 2978 6788
Fax +852 2760 1767
Email: info@christiesrealestate.com

CHRISTIE'S INTERNATIONAL REAL ESTATE

HONG KONG
Tel +852 2978 6788
Fax +852 2760 1767
Email: info@christiesrealestate.com

• DENOTES SALEROOM

ENQUIRIES?— Call the Saleroom or Office EMAIL— info@christies.com

For a complete salerooms & offices listing go to christies.com

28/02/19

CHRISTIE'S

CHRISTIE'S INTERNATIONAL PLC

François Pinault, Chairman
Guillaume Cerutti, Chief Executive Officer
Stephen Brooks, Deputy Chief Executive Officer
Jussi Pylkkänen, Global President
François Curiel, Chairman, Europe
Jean-François Palus
Stéphanie Renault
Héloïse Temple-Boyer
Sophie Carter, Company Secretary

INTERNATIONAL CHAIRMEN

Stephen Lash, Chairman Emeritus, Americas
The Earl of Snowdon, Honorary Chairman, EMERI
Charles Cator, Deputy Chairman, Christie's Int.
Xin Li-Cohen, Deputy Chairman, Christie's Int.

CHRISTIE'S EUROPE, MIDDLE EAST, RUSSIA AND INDIA (EMERI)

Prof. Dr. Dirk Boll, President
Bertold Mueller, Managing Director,
Continental Europe, Middle East, Russia & India

SENIOR DIRECTORS, EMERI

Zoe Ainscough, Cristian Albu, Maddie Amos,
Simon Andrews, Katharine Arnold, Upasna Bajaj,
Mariolina Bassetti, Ellen Berkeley, Jill Berry,
Giovanna Bertazzoni, Edouard Boccon-Gibod,
Peter Brown, Julien Brunie, Olivier Camu,
Jason Carey, Karen Carroll, Sophie Carter,
Karen Cole, Isabelle de La Bruyere, Roland de Lathuy,
Eveline de Proyart, Leila de Vos, Harriet Drummond,
Adele Falconer, Margaret Ford, Edmond Francey,
Roni Gilat-Baharaff, Leonie Grainger, Philip Harley,
James Hastie, Karl Hermanns, Rachel Hidderley,
Jetske Homan Van Der Heide, Michael Jeha,
Donald Johnston, Erem Kassim-Lakha,
Nicholas Lambourn, William Lorimer,
Catherine Manson, Susan Miller, Jeremy Morrison,
Nicholas Orchard, Keith Penton, Henry Pettifer,
Will Porter, Paul Raison, Christiane Rantzau,
Tara Rastrick, Amjad Rauf, François de Ricqles,
William Robinson, Alice de Roquemaurel,
Matthew Rubinger, Tim Schmelcher, John Stainton,
Nicola Steel, Aline Sylla-Walbaum, Sheridan Thompson,
Alexis de Tiesenhausen, Jay Vincze, David Warren,
Andrew Waters, Harry Williams-Bulkeley,
Tom Woolston, André Zlattinger

CHRISTIE'S ADVISORY BOARD, EUROPE

Pedro Girao, Chairman,
Contessa Giovanni Gaetani dell'Aquila d'Aragona,
Monique Barbier Mueller, Thierry Barbier Mueller,
Arpad Busson, Kemal Has Cingillioglu,
Hélène David-Weill, Bernhard Fischer,
I. D. Fürstin zu Fürstenberg,
Rémi Gaston-Dreyfus, Laurence Graff,
Jacques Grange, H.R.H. Prince Pavlos of Greece,
Terry de Gunzburg, Guillaume Houzé,
Alicia Kopolowitz, Robert Manoukian,
Contessa Daniela d'Amelio Memmo, Usha Mittal,
Polissena Perrone, Maryvonne Pinault,
Eric de Rothschild, Çiğdem Simavi, Sylvie Winckler

CHRISTIE'S UK

CHAIRMAN'S OFFICE, UK

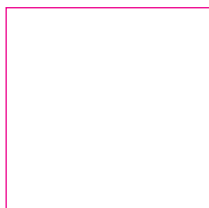
Orlando Rock, Chairman
Noël Annesley, Honorary Chairman;
Richard Roundell, Vice Chairman;
Robert Copley, Deputy Chairman;
The Earl of Halifax, Deputy Chairman;
Francis Russell, Deputy Chairman;
Julia Delves Broughton, Nicholas White, Mark Wrey

DIRECTORS, UK

Marco Almeida, Guy Agazarian, Alexandra Baker,
Jane Blood, Piers Boothman, Claire Bramwell,
Louise Broadhurst, Robert Brown, Antonia Calnan,
Lucy Campbell, Erin Caswell, Sarah Charles,
Ruth Cornett, Jessica Corsi, Nicky Crosbie,
Laetitia Delaloye, Armelle de Laubier-Rhally,
Freddie De Rougemont, Eugenio Donadoni,
Virginie Dulucq, Christopher O'Neil-Dunne,
Arne Everwijn, Nick Finch, Emily Fisher, Peter Flory,
Nina Foote, Christopher Forrest, Giles Forster,
Zita Gibson, Alexandra Gill, Keith Gill, Angus Granlund,
David Gregory, Christine Haines, Annabel Hesketh,
Peter Horwood, Adrian Hume-Sayer, Kate Hunt,
Pippa Jacob, Simon James, Imogen Kerr, Tjabel Klok,
Robert Lagneau, Tina Law, Adriana Leese, Tom Legh,
Jon-Ross Le Haye, Brandon Lindberg, Noah May,
Murray Macaulay, Graeme Maddison, Sarah Mansfield,
Nicolas Martineau, Astrid Mascher, Roger Massey,
Joy McCall, Neil McCutcheon, Michelle McMullan,
Daniel McPherson, Neil Millen, Leonie Mir,
Chris Munro, Patricia Nobel, Rosalind Patient,
Anthea Peers, Sara Plumby, Euthymia Procopé,
Lisa Redpath, Alexandra Reid, Sumiko Roberts,
Meghan Russell, Patrick Saich, Julie Schutz, Tom Scott,
Dominic Simpson, Nick Sims, Clementine Sinclair,
Katie Siveyer, Kay Sutton, Timothy Triptree,
Thomas Venning, Julie Vial, Anastasia von Seibold,
Gillian Ward, Amelia Walker, Jud Wei-Ting,
Ben Wiggins, Bernard Williams, Georgina Wilsenach

ASSOCIATE DIRECTORS, UK

Ksenia Apukhtina, Lucy Beckett, Harriet Bingham,
Hannah Boissier, Sarah Boswell, Phill Brakefield,
Jenny Brown, Laure Camboulives, David Cassidy,
Alexandra Cawte, Marie-Louise Chaldecott,
Ivy Chan, Jack Coleman, Amandine Consigny,
Claudio Corsi, Hugh Creasy, Katia Denysova,
Grant Deudney, Milo Dickinson, Amanda Dixon,
Ekaterina Dolinina, David Ellis, Rachel Evans-Omeyer,
Paola Saracino Fendi, Martina Fusari, Pat Galligan,
Elisa Galuppi, Constanza Giuliani, Adeline Han,
Celia Harvey, Daniel Hawkins, Anke Held,
Sophie Hopkins, Jude Hull, James Hyslop, Wei-Ting Jud,
Guady Kelly, Amy Kent, Julia Kiss, Zoe Klemme,
Rachel Koffsky, Polly Knewstubb, Rebecca Lazell,
Rob Leatham, Tessa Lord, Stephanie Manstein,
Ottavia Marchitelli, Georgie Mawby, David McLachlan,
Lynda McLeod, Toby Monk, Alice Murray,
Rosie O'Connor, Clara Paschini, Christopher Petre,
Antonia Pitt, Alastair Plumb, Eugene Pooley,
Sarah Rancans, Sarah Reynolds, Elliot Safra,
Marta Saporiti, Pat Savage, Annabelle Scholar,
Hannah Schweiger, Angus Scott, Charles Scott,
Valeria Severini, Graham Smithson, Annelies Stevens,
Iain Tarling, Sarah Tennant, Susann Theuerkauf,
Mary-Claire Turkington, Flora Turnbull, Damian Vesey,
Alice Vincent, Annie Wallington, Tony Walshe,
Harriet West, Annette Wilson, Julian Wilson,
Miriam Winson-Alio, Suzanne Yalcin-Pennings,
Charlotte Young





CHRISTIE'S

8 KING STREET ST. JAMES'S LONDON SW1Y 6QT